

La Mesa Police Department

Operations Report

April – June 2009



Alan Lanning

Chief of Police

Law Enforcement Operations and Statistics

Part 1 Crimes and Patrol Statistics

The rate of serious crime continued to decline in the second quarter of the year and at an overall rate of 35.0 Part 1 Crimes per 1,000 residents, is 12% lower year to date (YTD) than 2008. The crime rate for the first half of 2008 represents the lowest serious crime rate La Mesa has experienced since 1967.

Violent crimes, which consist of Homicide, Rape, Robbery, and Aggravated Assault, fell by a combined total of 10% compared to 2008, with declines or no change in each crime classification. Of particular note, Robbery fell by 9% in the first half of the year, following regional trends that were first noted in 2008. Our decline in robberies is remarkable in that we experienced an unusually high number of robberies in January of this year. The 16 robberies that month were 50% to 60% above the average we have experienced over the past several years, in which we have had higher numbers of robberies compared to our long-term data. Discounting January, the 36 robberies reported over the past five months represents an annualized rate of approximately 86 robberies per year. This is about a one third reduction from the past several years. This trend, and especially the decline in "Street" and "Bank" robberies, is likely the result of several factors; the positive results from the Regional Robbery Initiative, the proactive work of our Special Enforcement Detail, and enhanced staffing of MTS security personnel in the East County.

Some case highlights include a series of robberies at 7-11 stores throughout the county. La Mesa Detectives attended several meetings with El Cajon PD, San Diego PD, the Sheriff's Department, and FBI to keep informed on the series. Three suspects were arrested in separate operations by El Cajon PD and the Sheriff's Department, and La Mesa Detectives were able to close our two series related cases. The regional robbery e-mail distribution list, a feature of the "ARJIS Regional Robbery Information" web page, was responsible for initially connecting the 7-11 robbery series.

In June a suspect was arrested by La Mesa Patrol Officers after he robbed several convenience stores in La Mesa and the Lemon Grove area in one night. This appears to have been a one-time act by the suspect and not part of a robbery series.

The number of property crimes, which consist of Theft, Burglary, and Auto Theft, fell by 12% YTD. As we saw in the first quarter of the year, Commercial Burglaries and Auto Theft fell sharply, with respective declines of 42% and 40%. Another positive note was a 13% drop in the number of Vehicle Burglaries.

The most significant crime increase we had in the first half of the year was in the category of Residential Burglaries and that increase was seen almost entirely in the second quarter. During the second quarter 71 residential burglaries were reported,

compared to only 37 in the second quarter of 2008. Much of this increase was seen in the southwest area of the City, south of El Cajon Boulevard and generally on streets bordering Harbinson Avenue and Massachusetts Avenue. Similarly, the Sheriff's Department noted an increased number of burglaries in the northwest area of Lemon Grove, bordering La Mesa. In mid June La Mesa Patrol Officers responded to a reported burglary in progress and arrested a male suspect. This suspect had moved into a home in the 4400 block of Harbinson Avenue just as the increase in burglaries began to happen. He was initially charged with six counts of burglary and subsequent investigations have linked him to additional cases. Shortly after this arrest, two suspects were arrested following a burglary in National City and subsequently linked to an additional La Mesa burglary case. Since these arrests our residential burglary rate has dropped to more normal levels.

Three of our four Crime Focus areas saw declines in the number of crimes during the first half of the year, with the trolley stations being the lone exception. Part 1 Crimes at our five trolley stations increased from 12 to 18, with the increase involving theft related activities. Robberies fell from 6 to 4 incidents. Both La Mesa Village and Grossmont Center saw small declines in the number of crime cases but the most encouraging data was from Grossmont Hospital, where the number of incidents dropped by 13 YTD, a 41% reduction.

During the second quarter of the year Patrol Officers conducted two enforcement operations in our Crime Focus areas. From mid March to mid May they worked in the Grossmont Center area and from mid May to mid July in the La Mesa Village area. The decline in the number of crimes for both of these areas demonstrates the value of these efforts.

The Patrol Division statistics for the first half of the year are included in your report and show a decrease in calls-for-service compared to the same time frame last year, of 7%. Staff hours remained essentially the same. Officer initiated activities, as shown in "Origin", "Traffic", and "Contacts" categories also declined.

I reviewed this data with staff and we noted several factors leading to this decline in initiated activity. During the first half of the year we had eight Police Officers and two Community Service Officers in various stages of field training. This consistently limits the training officer's non-directed patrol time and self-initiated work due to the amount of time spent in teaching the trainee, preparing evaluation reports on the trainee, and the generally slower work pace of the trainee. SED Officers during this time frame have been more involved in ongoing investigations and surveillance operations, which limits the number of recordable contacts they generate. Patrol Officers have been involved in the two focused enforcement efforts described earlier, which tends to reduce their number of recordable contacts, and we have had some short term vacancies in the Traffic Unit, which has further reduced the volume of self-initiated work.

During this quarter the Department conducted a three day transient/unlawful camping operation, June 14th, 15th, and 16th. The purpose of the detail was to identify unlawful camping locations, take enforcement actions where possible, and remove the unlawful camps. The operation was coordinated with the Code Compliance Officer and Community Development Department, to identify property owners where the encampments were found and advise them of applicable City ordinances.

Over the course of the three days officers identified 34 illegal campsites, with about two thirds of them being located in the undeveloped area north of High Street. Officers cited a total of 16 subjects and noted the following characteristics among all the subjects who were either contacted or cited: 24 males, 3 females, all adults; 5 subjects on parole, 4 on probation, 13 with a criminal history, 5 with a psychiatric history, and 12 with self-admitted substance abuse problems or history. Some of the property and equipment found at the illegal campsites was voluntarily removed, removed by City personnel to be claimed later, or removed after it was abandoned. Staff are following up with property owners on a number of locations to insure remaining property and equipment are removed.

For reference, a report from the San Diego Taskforce on the Homeless is attached, with the results of their most recent "point in time" count of the homeless in the San Diego region, from January 31, 2008 (www.rtfhdsd.org, see "Publications", "Fact Sheets", "2008 Point in Time").

Earlier this year the Department submitted an application for grant funding to the Department of Alcoholic Beverage Control (ABC), to fund operations targeting various alcohol-related violations. We were notified on May 15th that due to limited available funding, our application had been denied. We plan to apply for future ABC grants, as they are announced.

The Department did receive a grant award from the La Mesa Community Welfare Association this year, to fund the purchase of five Automatic External Defibrillators, or "AED's." These have been purchased and five of our patrol cars have been outfitted with the AED's.

Special Enforcement Detail

The Special Enforcement Detail (SED) is currently fully staffed with 1 sergeant and 3 officers. During the 2nd Quarter SED participated in five operations, with either allied agencies or other units within the Police Department. The operations were:

- A registered sex offender compliance operation with the Investigations Unit
- An enforcement operation along the trolley line in La Mesa

- An enforcement and compliance operation targeting gang members in the East County, with the El Cajon Police Department and the Probation Department
- An enforcement and compliance operation in El Cajon with the El Cajon Police Department and Sheriff's Department, as part of the Meth Task Force
- A transient/unlawful camping enforcement operation with LMPD Patrol Division personnel

SED personnel attended a number of regular meetings during the last quarter, with the East County Parole Office, the San Diego Parole Office, District Attorney East County Branch Gang Investigations, East County Crime Prevention, El Cajon PD Gang Street Team, San Diego State University's Special Operations Unit briefings, San Diego Probation Gang Street Unit briefing, and Meth Task Force Meetings.

SED wrote one search warrant and assisted with another. The search warrant was for sales of heroin. SED conducted surveillance of a residence on Jessie Avenue and developed enough information to obtain the search warrant for the sale of heroin. SED executed the search warrant and six arrests were made, along with the seizure of eleven grams of heroin.

The second search warrant was related to a residential burglary series in the southwest area of La Mesa. SED assisted the Investigations Unit in writing and executing this search warrant for the suspect's residence.

Over the last quarter SED Officers attended the following training:

- Oxycontin Update Class
- Regional Officer Training (State mandated)
- Investigator Core Course
- San Diego Gang Suppression Team training

SED Officers wrote two training bulletins as part of the Department's in-service training program. The training bulletins dealt with the California Department of Corrections and Rehabilitation system of issuing inmate identification numbers and the drug Oxycontin. SED Officers also provided "Field Interview" and gang training presentations at Patrol briefings.

During the last quarter there was no significant gang activity in La Mesa. SED did not identify any ongoing gang violence or gang tagging, which indicates there are no active or sustained efforts to "claim" any La Mesa areas. SED continues to be proactive in this area.

SED had the following significant cases during the 2nd Quarter of 2009:

- Assisted the Investigations Unit with a robbery series by conducting surveillance at 7-11 stores for several nights
- Investigated a narcotics tip and conducted several weeks of surveillance, leading to the arrest of a felon in possession of a machine gun
- Identified a heroin dealer and seized over 11 grams of the substance, making six arrests
- Recovered two stolen vehicles and apprehended a suspect in each case
- Made four arrests from two residences after receiving complaints from neighbors in their respective neighborhoods
- Closed six commercial burglary cases involving thefts of alcohol from Albertson's grocery stores and arrested two (2) suspects

SED 2nd Quarter Activity Summary

Activity	2nd Quarter 2009	2nd Quarter 2008	2009 YTD	2008 YTD
Felony Arrests	22	22	37	47
Misdemeanor Arrests	15	29	21	41
Field Interviews	56	87	74	234
Citations	13	7	14	21
Vehicle Impounds	6	7	7	17
Probation Searches	98	17	143	54
Parole Searches	36	15	48	32

Gang Issues and Enforcement

Based on CAL-Gangs, probation, and parole statistics, there are 73 documented gang members living in La Mesa as of the end of the 2nd Quarter. During this past quarter the San Diego regional connection for CAL-Gangs began an audit of information contributed to the database from our region. They have removed some entries based on the results of the audit and this accounts for a portion of the decline in this statistic for La Mesa, which was reported as 104 in last quarter's report.

As noted in this quarter's report, SED Officers are continuing to spend a portion of their time addressing gang related cases and activities, and working in conjunction with our East County Gang Task Force (GTF) Detective.

During the past quarter the GTF Detective participated in a southbound border operation targeting individuals taking U.S currency and guns into Mexico. He also assisted SED Officers with a surveillance of a residence on Clearview Way. Information had been received that the residence contained an indoor marijuana-

grow and was being maintained by a possible gang member from San Diego. The residence was later searched and even though there was no marijuana-grow, an assault weapon was confiscated.

In June the GTF Detective participated in a gang enforcement and compliance operation in Spring Valley, Lemon Grove, and in the unincorporated area of La Mesa.

Narcotics Task Force

As a result of a house fire on Troy Lane in La Mesa in December 2008, a gang member was arrested for the cultivation of marijuana at the residence. The equipment used to grow the marijuana inside of the house was determined to be the direct cause of the fire and resulted in extensive damage to the home.

Further investigation of the arrestee's known associates and family members revealed that the house in La Mesa was just one of several houses being rented and/or occupied by the group solely for the purpose of growing marijuana indoors. In March three additional suspects were arrested after three indoor marijuana growing operations were discovered and dismantled. All four suspects are being prosecuted on federal charges. Over 1,000 marijuana plants have been seized and destroyed, with an approximate street value of \$1,000,000.

Domestic Violence

Attached to your report is a summary of reported Domestic Violence cases for the past three years, through the second quarter of 2009. The number of cases is up 14% from the second quarter of 2008 and 9% from the past three years' average. We have not identified any factors or trends to account for this increase but will continue to monitor the data and look for causes.

Registered Sex Offenders

At the end of the 2nd Quarter 2009 the total number of sex registrants living in La Mesa was 68, a decrease of 9 from the last quarter. All registrants are in compliance.

In April 2009, the Investigations Unit and SED conducted a Sex Offender Registration Detail. During the registration checks one of the registered sexual offenders was found to be living with a single mother and her two minor children, who were not aware he was a registered sex offender. The registrant was sharing a bedroom, and at times sleeping in the same bed, with a six year old. The registrant was arrested after an investigation showed he had been molesting the six year old since January of 2009. The registrant is now facing multiple new child molest counts, which carry a potential life sentence.

Parolees and Probationers

Attached to your report are three charts showing the parolee population in La Mesa at the end of the second quarter and the primary offense for which they had been committed to prison. The 124 parolees identified as living in La Mesa at the end of the quarter is down 16% from the same time frame last year.

The most recent information on the issue of the release of prisoners from the state prison system indicates that approximately 27,000 prisoners will be identified for early release. They will be evaluated on a number of criteria, including age, health, commitment offense, and time remaining on their original sentence. The California Police Chiefs' Association has reviewed this aspect of the pending State budget agreement and has endorsed it as a reasonable approach in addressing the State's budget shortfall and prison overcrowding without unduly compromising public safety.

Two charts are included in this quarter's report on the number of adults living in La Mesa who are on probation and a summary of the offenses for which probation was granted.

Traffic Collisions / Citations / Enforcement Operations

During the second quarter of the year ten locations were found to have two collisions each, so no single location emerged with a disproportionate collision history.

Enforcement operations funded by the 2009 "Click It Or Ticket" grant began in October 2008. During the second quarter of 2009 officers issued 240 citations during related enforcement operations and impounded 3 vehicles. Grant operations are funded through September 8, 2009.

During the 2nd Quarter of the year the Traffic Unit received 11 traffic complaints/enforcement requests. The three most prominent locations are listed here, along with actions taken by the Traffic Unit.

Intersection of Severin Drive and Earl Street: Stop sign violations

The Traffic Unit dedicated extra enforcement activity to the area on ten occasions and issued forty citations.

9100 Golondrina Drive: Speeding

The radar display trailer was placed on the street on four separate days, from March 26th to April 1st, at times identified by the complainant. Average speeds each day were in the 20-25 MPH range, with a maximum speed recording of 42 MPH. Traffic officers also provided extra patrol in the area but no violations were noted.

70th Street and Neri Drive: Speeding

The Traffic Unit dedicated extra enforcement activity to this area on nine separate occasions. Five citations were issued for speeding and ten additional citations for other violations were also issued.

This year the City entered into an MOU with the City of Chula Vista, to participate in illegal street racing enforcement operations, as part of "Operation Crack Down on Illegal Street Racing." La Mesa officers assisted in a saturation patrol operation on April 3rd and issued six citations for illegal driving and/or equipment, related to street racing. This program is funded by an Office of Traffic Safety grant of \$663,000 and will continue through September 30, 2010.

Traffic Unit officers participated in the monthly "County-wide Inter-agency Traffic Enforcement (CITE) details in April, May, and June. The operations focused on San Diego, Coronado, and Chula Vista respectively.

Citations and Collisions				
Violation	1st Half 2009		1st Half 2008	
	Citations	Collisions	Citations	Collisions
Right of Way	27	14	129	24
Speeding	303	32	761	35
Following Too Close	3	0	2	3
Violation of Sign/Signal	553	12	641	21
Unsafe Backing/Start	3	9	3	4
Improper Turn	71	36	81	46
Wrong Side of Road	15	7	23	3
Unsafe Lane Change	6	0	10	0
Passing Violation	9	0	13	1
Pedestrian Right of Way	3	1	2	4
Pedestrian Violation	57	2	97	3
Alcohol Related	13	26	19	28
Other Hazardous	35	48	16	53
License/Registration	234	1	530	0
Equipment	960	0	973	1
Littering	3	0	8	0
Other Non-Hazardous	368	0	711	1
Total	2,663	188	4,019	227

California Law Enforcement Challenge Results

In last quarter's report I related that the Department had submitted an entry in the California Law Enforcement Challenge, an annual event hosted by the California Highway Patrol. This is a competition between all police agencies receiving Office of Traffic Safety grant funds and involves compiling all efforts made by each agency toward the goals of combating intoxicated drivers, enforcing seat belt use, and reducing injuries caused by identified primary collision factors during a one year period.

We recently received the results for the 2008 Challenge competition. We scored 101 points out of a possible 190. The winning agency in our category, grouped by size, scored 144 points. The second place entry scored 138 and third had 125. Points are awarded in the categories of agency policies, officer training, awards and incentives provided to officers and citizens for safe driving, public information and education, and the number and effectiveness of enforcement activities. Traffic Unit staff reviewed our submission with staff from the Challenge program and received some worthwhile input for improving our 2009 submission.

DUI Prevention and Enforcement

In the 2nd quarter of the year Traffic Unit personnel conducted five DUI enforcement operations, all funded through Office of Traffic Safety grant programs. In addition to these enforcement operations, the Department received grant funds to purchase a new \$30,000 DUI Check Point Trailer, which was delivered in April, and sent three members of the Traffic Unit to the annual Office of Traffic Safety Summit in April.

The Department has received tentative approval of our application for a 2009 DUI Enforcement and Awareness Grant, in the amount of \$114,059, effective October 1, 2009 through September 30, 2010. Staff are preparing a report to the City Council recommending formal acceptance of this grant.

Traffic Unit personnel assisted in the presentation of the "Every 15 Minutes" DUI and alcohol awareness program at Helix Charter High School, May 21st and 22nd.

Tables on the following page provide information on annual DUI arrest and collision data, as well as DUI operations during the past quarter.

DUI Arrests & Collisions Summary / 2002-2009

Year	Arrests	Collisions
2002	167	61
2003	199	53
2004	219	52
2005	233	55
2006	260	69
2007	235	56
2008	238	53
1 st Half 2009	106	26

DUI Operations

Date	Type	Vehicles Screened	Sobriety Tests Done	Arrests	Citations	Vehicle Impounds
April 18 th	Checkpoint 8900 La Mesa Blvd.	851	2	2-DUI 1-Warrant 1-Drug influence 1-Drug possession	28	8
April 24 th	DUI Warrant Sweep	n/a	n/a	9-Warrant	n/a	n/a
May 5 th	Saturation Patrol La Mesa	59 traffic stops	10	2-DUI 1-Drug possession	Not reported	Not reported
June 13 th	Probation Stakeout	n/a	n/a	2 of 14 target subjects	Not reported	Not reported
June 18 th	Court Sting East County	242	Not reported	None	16	16

Community Resource Unit Activities and Information

RSVP and Storefront Activities

Activity	1st Half 2009	1st Half 2008
Volunteer Hours	7,757	7,218
Vacation Home Checks	502	411
“You Are Not Alone” home visits	284	138
Vehicles marked for 72 hour parking	640	825
Vehicles towed for 72 hour parking	22	32
Parking Citations	564	742
Net Storefront Revenue	\$32,238	\$31,469
RSVP Staff	54	57

La Mesa Community Youth Services Network

Beginning in February of this year the Department held a series of meetings with various community groups and organizations to discuss issues and programs related to the youth in our community. The meetings resulted in the formation of the La Mesa Community Youth Services Network, with the first meeting held in June of this year. Organizations participating in the Network include the La Mesa Police Department, La Mesa First United Methodist Church, San Diego Organizing Project, La Mesa – Spring Valley School District, East County Family Justice Center, Helix Charter High School, SDYCS, Boys’ & Girls’ Clubs of East County, Institute for Public Strategies, Communities Against Substance Abuse, Center for Community Solutions, La Mesa Village Merchants’ Association, La Mesa Community Services Department, East County Regional Chamber of Commerce, Harmonium, Inc., John A. Davis YMCA, La Mesa Chamber of Commerce, San Diego County Office of Education, and Grossmont Center. Network meetings are held monthly and serve the following purposes for the participating organizations:

- To provide information about programs and services they offer for community youth and how they can be accessed
- To seek information about programs and services for community youth with a particular need or series of needs, and how they can be accessed
- To discuss, on an anonymous basis, particular youth or cases and seek input/resources from Network members for solutions
- To share, through the La Mesa Teen Website and other media resources, information about youth related programs, services, events, activities, and employment and education opportunities

School Resource Officers

Officer McNamara – Helix Charter High SRO: In addition to her routine duties, Officer McNamara attended two “Readiness and Emergency Management for Schools” meetings, attended by school staff and emergency services personnel to discuss responses to critical incidents at schools. She worked with students and staff on the “Every 15 Minutes” program, which was presented on May 21st and 22nd. She began coordinating classroom identification checks, where school security officers enter the classrooms to make sure there are no non-students present. Officer McNamara coordinated multiple details in front of the school, with the assistance of patrol officers, to monitor both student and non-student activities.

During the quarter Officer McNamara held 37 student/parent meetings and attended 36 school staff meetings. She conducted 5 criminal investigations, 9 home welfare checks and sent 6 educational e-mails to school staff. She also made 7 classroom presentations.

Officer Hinton – La Mesa-Spring Valley School District SRO: During the 2nd Quarter of 2009 School Resource Officer Hinton completed 2 “Bullying” presentations, 2 “Good Citizens” presentations, 3 “Juvenile Law Class” presentations, 12 criminal investigations, administered 8 teacher/parent/student conferences, conducted 4 home visits, and 2 school lockdown drills. He also attended 2 “Active Shooter Planning Group” meetings with other East County law enforcement agencies and school personnel, to plan responses for critical incidents on school campuses in our region.

During the month of April, in a continued effort to address traffic issues surrounding Murray Manor Elementary School, Officer Hinton attended their PTA Meeting, along with a Traffic Officer, to discuss ways to improve traffic safety around the school. He also made increased efforts to be more visible during morning and afternoon hours when students are being dropped off or picked up from school. Parents, faculty, and staff expressed their appreciation for the Police Department’s attendance at their meeting and the efforts on traffic safety issues.

Officer Hinton conducted an evacuation of Lemon Avenue Elementary School in early April, when workers broke a gas line in the street directly in front of the school. The entire school was evacuated safely and smoothly, without incident.

During the month of May, Officer Hinton attended a training class on the use of the drug “Oxycontin” by middle and high school students, and the effects it has on the human body. Finally, he took part in the “Career Day” program presentation at Bancroft Community School in Spring Valley.

Crime Prevention Specialists

CPS Mike Gleason: CPS Gleason continued to work on the volunteer graffiti abatement program known as the "Paint Out Posse". The "Paint Out Posse" currently has thirteen citizens who contribute regularly to the effort by looking for and reporting graffiti to the Graffiti Hot Line (466-3789). Their efforts are complimented by 8 volunteers who, along with CPS Gleason, respond to the graffiti sightings and remove or cover the vandals' markings. Typically, graffiti reported on the Hot Line is removed by CPS Gleason on Mondays and Thursdays, though there are occasional instances that present special challenges and may require more time. The volunteers respond on a time-available basis.

CPS Gleason continued to facilitate the efforts of property owners and police personnel to identify and resolve issues related to crime and "quality of life" concerns on Rosebud Lane and the surrounding area. Currently the apartment managers' group meets monthly. The participants consider living conditions in the Rosebud neighborhood to have improved significantly in the last year. Calls for service to the Police Department are now primarily related to domestic disturbances and loud music, whereas in the past these calls were in response to groups of juveniles and young adults fighting, committing crimes, or behaving in an intimidating manner, frightening the area's residents. The group is currently focusing on behavioral issues among the residents of Schoolridge Lane and juvenile skateboarders on Rosebud Lane. The condition of the properties themselves has also improved due to peer pressure from property owners and the support they receive from Code Compliance Officer Allan Edwards.

CPS Heather Lindquist: During this quarter Crime Prevention Specialist Heather Lindquist conducted one Neighborhood Watch Meeting along with eight community presentations. These included several presentations regarding the "Every 15 Minutes" Program as well as completing the program itself, judging the Helix Senior Projects, a safety presentation to the staff at the New Life Presbyterian Church, a home security presentation at the Rolando Women's Club, and an "Every 15 Minutes" presentation at the La Mesa Lions Club.

Also, the Department has recently developed a new system of notifying neighbors of burglarized homes through the use of fliers distributed by the RSVP's. These notices have generated several tips and at least 2 new Neighborhood Watch groups.

A commercial DVD that provides crime prevention information focusing on business areas and personal safety was completed and is now available on the City website.

Attachments:

2009 2nd Quarter Part 1 Crimes & Patrol Statistics Report
Domestic Violence Statistics
Resident Parolees/Probationers Quarterly Report

Crime Focus Areas and Events Reports

Robbery Statistics

MTS Trolley

La Mesa Village

Grossmont Center

Grossmont Hospital

Performance Measure Report – Graffiti

Performance Measure Report – Crime Prevention Services

Performance Measure Report – Patrol Time

Performance Measure Report – Response Times

Regional Taskforce on the Homeless – One Day Homeless Count

La Mesa Police Department
2nd Quarter 2009, Part I Crimes
and Patrol Statistics

CITY OF LA MESA
Alan Lanning, Chief of Police



Prepared by: Crime Analysis

July 7, 2009

2009 Second Quarter Crime Statistics

Section 1.....Uniform Crime Report Part I Crimes (2 pages)

Section 2.....Patrol Statistics (1 page)

Section 3.....Crime Rates By Census Tracts (1 page)

Section 4.....Domestic Violence Statistics (1 page)

La Mesa Police - 2nd Quarter Crime Statistics - 2009



DATA	2008		2009		Year to Date Change		
	1st Qtr.	2nd Qtr.	1st Qtr.	2nd Qtr.	THIS YTD	LAST YTD	YTD % Change
VIOLENT CRIMES:							
Homicide	0	0	0	0	0	0	0%
CLEARED	0	0	0	0	0	0	0%
Rape	3	5	5	1	6	8	-25%
CLEARED	3	6	4	2	6	9	-33%
Robbery	25	32	31	21	52	57	-9%
CLEARED	15	11	19	12	31	26	19%
Aggravated Assault	32	20	20	27	47	52	-10%
CLEARED	24	20	16	19	35	44	-20%
PROPERTY CRIMES:							
Res. Burglary	50	37	54	71	125	87	44%
Comm. Burglary	38	31	19	21	40	69	-42%
Burglary Total:	88	68	73	92	165	156	6%
CLEARED	7	9	10	11	21	16	31%
Theft > \$400	101	141	96	92	188	242	-22%
Car Prowls	156	183	151	145	296	339	-13%
Theft \$400 or less	191	229	195	226	421	420	0%
Theft Total:	292	370	291	318	609	662	-8%
CLEARED	46	51	50	79	129	97	33%
Auto Theft	85	106	64	50	114	191	-40%
CLEARED	5	9	4	10	14	14	0%
TOTAL VIOLENT:	60	57	56	49	105	117	-10%
CLEARED	70%	65%	70%	67%	69%	68%	*-9%
TOTAL PROPERTY:	465	544	428	460	888	1009	-12%
CLEARED	12%	13%	15%	22%	18%	13%	*29%
FBI INDEX:	525	601	484	509	993	1126	-12%
CLEARED	19%	18%	21%	26%	24%	18%	*15%
VIOLENT RATE	PER 1,000 POP.				3.7/K	4.2/K	
PROPERTY RATE	PER 1,000 POP.				31.3/K	35.9/K	
INDEX RATE	PER 1,000 POP.				35.0/K	40.0/K	

*Percentage change by number of crimes cleared



AUTOMATED
REGIONAL JUSTICE
INFORMATION SYSTEM

2ND QUARTER CRIME STATISTICS - Robbery & Theft Breakdown

	2008		2009		Year to Date Change			
	1st Qtr.	2nd Qtr.	1st Qtr.	2nd Qtr.	THIS YEAR	LAST YEAR	YTD % Change	
Robbery								
Street/Highway	11	17	16	6	22	28	-21%	
Commercial	7	7	6	6	12	14	-14%	
Gas or Service Station	0	1	3	0	3	1	200%	
Chain Store	2	1	1	5	6	3	100%	
Residential	0	1	3	1	4	1	300%	
Bank	4	2	1	0	1	6	-83%	
** Miscellaneous	1	3	1	3	4	4	0%	
TOTAL	25	32	31	21	52	57	-9%	
YTD Cleared Cases	60% solved	15	11	9	12	31	26	19%
Theft								
Pocket-Picking	0	1	0	2	2	1	100%	
Purse Snatching	1	2	4	1	5	3	67%	
Shoplifting	57	55	52	85	137	112	22%	
From Motor Vehicles	115	134	117	124	241	249	-3%	
Motor Vehicle Parts & Acc.	41	49	34	21	55	90	-39%	
Bicycles	3	5	10	10	20	8	150%	
From Buildings	45	61	34	41	75	106	-29%	
From Coin Operated Machines	5	6	0	3	3	11	-73%	
All Others	25	57	40	31	71	82	-13%	
TOTAL	292	370	291	318	609	662	-8%	
YTD Cleared Cases	21% solved	46	51	57	49	129	97	33%

N/C = Not Calculable

La Mesa Police - Patrol Statistics 2nd Qtr. - 2009

(Source: Officer's Daily Report- Patrol Logs)

		2008		2009		Year to Date Change		
		1st Qtr	2nd Qtr	1st Qtr	2nd Qtr	THIS YEAR	LAST YEAR	YTD % Change
Origin:	Primary	5,192	5,487	4,721	5,165	9,886	10,679	-7%
	Cover	3,707	4,006	3,615	3,931	7,546	7,713	-2%
	Officer Initiated	7,149	7,119	6,070	6,037	12,107	14,268	-15%
Dispo:	Arrest	425	416	404	425	829	841	-1%
	Report	1,387	1,455	1,208	1,237	2,445	2,842	-14%
	No Report	14,089	14,645	12,590	13,189	25,779	28,734	-10%
Reports:	Part I	622	640	558	616	1,174	1,262	-7%
	Other	725	789	666	674	1,340	1,514	-11%
	Follow-ups	57	60	51	51	102	117	-13%
Arrests:	Felony	139	120	127	124	251	259	-3%
	Misdemeanor	207	261	198	242	440	468	-6%
	Citizen	25	34	27	36	63	59	7%
	Warrant	67	60	64	63	127	127	0%
	Detentions	61	45	53	74	127	106	20%
Traffic:	Hazardous Citations	1,196	1,588	780	1,109	1,889	2,784	-32%
	Non-Hazardous Cites	492	527	443	475	918	1,019	-10%
	Parking Citations	1,273	1,207	1,282	1,167	2,449	2,480	-1%
	Warnings	1,358	1,195	1,118	976	2,094	2,553	-18%
	Accidents / PDO's	88	72	69	63	132	160	-18%
	Impounds	348	294	215	196	411	642	-36%
Contacts:	Field Interviews	514	422	245	230	475	936	-49%
	Citizen Contacts	987	1,173	1,047	875	1,922	2,160	-11%
	Security Checks	1,918	1,872	1,669	1,690	3,359	3,790	-11%
Other:	Transports	347	337	342	346	688	684	1%
	Community Project Time/mins.	240	185	165	160	325	425	-24%
Regular Hours		13,705	13,531	13,862	13,935	27,797	27,237	2%
Overtime Hours		949	1,328	965	708	1,673	2,277	-27%
Non Directed Time**		41.9%	37.8%	30.3%	33.7%	34.4%	37.8%	-9%

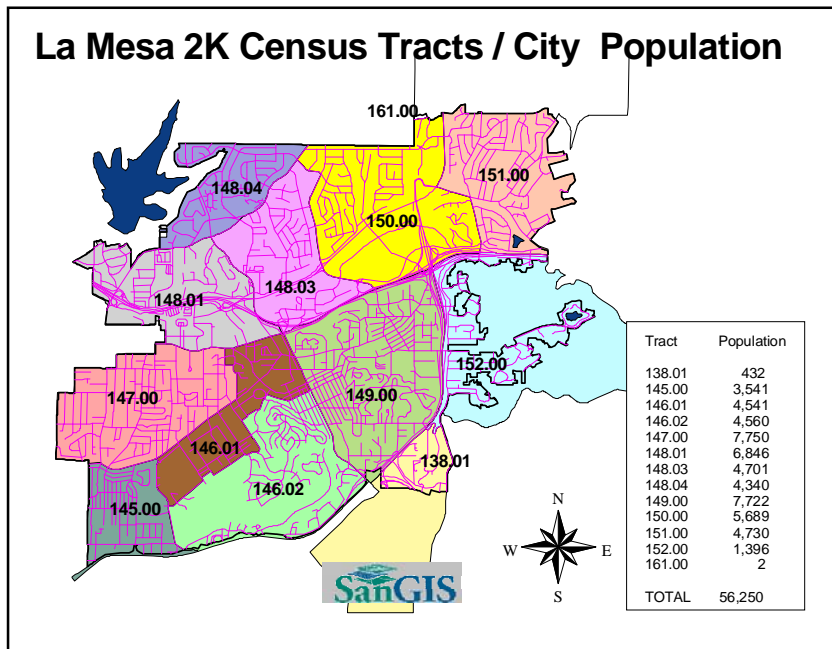
** YTD Percent Averaged

Crime Rates By Census Tracts

January 01, 2009 through June 30, 2009

Violent Crimes	Murder Rape Robbery Agravated Assault
Census Tract	Crimes Per Thousand Population
146.01	11.45
150.00	7.03
146.02	5.26
148.01	5.26
147.00	2.32
148.03	2.13
152.00	1.43
149.00	1.30
151.00	1.27
148.04	0.92
145.00	0.56
138.01	0.00
161.00	0.00
City Wide Average	3.7

Property Crimes	Burglary Larceny Motor Vehicle Theft Arson
Census Tract	Crimes Per Thousand Population
150.00	96.33
148.03	36.59
152.00	32.95
148.01	30.38
146.01	29.51
151.00	25.79
148.04	23.96
149.00	21.24
147.00	16.77
146.02	15.35
145.00	14.69
138.01	9.26
161.00	00.00
City Wide Average	31.3



2009 Estimated Population:
56,666

Domestic Violence Statistics

Penal Code Section 13700(a) defines "Abuse", with respect to Domestic Violence, as "Intentionally or recklessly causing or attempting to cause bodily injury, or placing another person in reasonable apprehension of imminent serious bodily injury to himself or herself, or another."

Penal Code Section 13700(b) defines "Domestic Violence" as "Abuse committed against an adult or fully emancipated minor who is a spouse, former spouse, cohabitant, former cohabitant, or person with whom the suspect has had a child or is having or has had a dating or engagement relationship. For purposes of this subdivision, "cohabitant means two unrelated adult persons living together or a substantial period of time, resulting in some permanency of relationship. Factors that may determine whether persons are cohabiting include, but are not limited to, (1) sexual relations between the parties while sharing the same living quarters, (2) sharing of income or expenses, (3) joint use or ownership of property, (4) whether the parties hold themselves out as husband and wife, (5) the continuity of the relationship, and (6) the length of the relationship."

Mo./Yr.	YTD	Guns	Knives	Other	Hands	No Weapon	Total
04-06	117	1	1	6	21	6	35
05-06	150	0	1	7	22	3	33
06-06	181	0	0	4	25	2	31
07-06	218	0	1	5	29	2	37
08-06	240	1	0	5	12	4	22
09-06	269	0	1	5	13	10	29
10-06	303	0	0	3	25	5	34
11-06	335	1	0	2	27	2	32
12-06	363	0	0	0	23	5	28
01-07	26	0	0	2	22	2	26
02-07	59	1	1	1	27	3	33
03-07	94	1	1	1	29	3	35
04-07	129	0	0	2	31	2	35
05-07	165	0	1	3	28	4	36
06-07	193	1	0	2	24	1	28
07-07	230	0	0	5	29	3	37
08-07	254	0	0	2	19	3	24
09-07	270	0	0	1	14	1	16
10-07	295	0	0	0	22	3	25
11-07	322	0	1	4	19	3	27
12-07	347	0	0	1	24	0	25
01-08	32	0	1	9	21	1	32
02-08	60	1	0	1	25	1	28
03-08	84	0	1	2	15	6	24
04-08	115	0	3	1	21	6	31
05-08	138	0	0	3	17	3	23
06-08	174	0	0	2	30	4	36
07-08	212	0	1	1	30	6	38
08-08	247	0	1	3	25	6	35
09-08	286	0	0	4	29	6	39
10-08	309	0	0	3	18	2	23
11-08	353	1	1	6	35	1	44
12-08	385	0	0	5	32	4	41
01-09	26	0	0	2	23	1	26
02-09	53	0	0	1	24	2	27
03-09	89	0	1	0	33	2	36
04-09	125	0	0	3	26	7	36
05-09	170	0	0	5	35	5	45
06-09	199	1	0	2	20	6	29

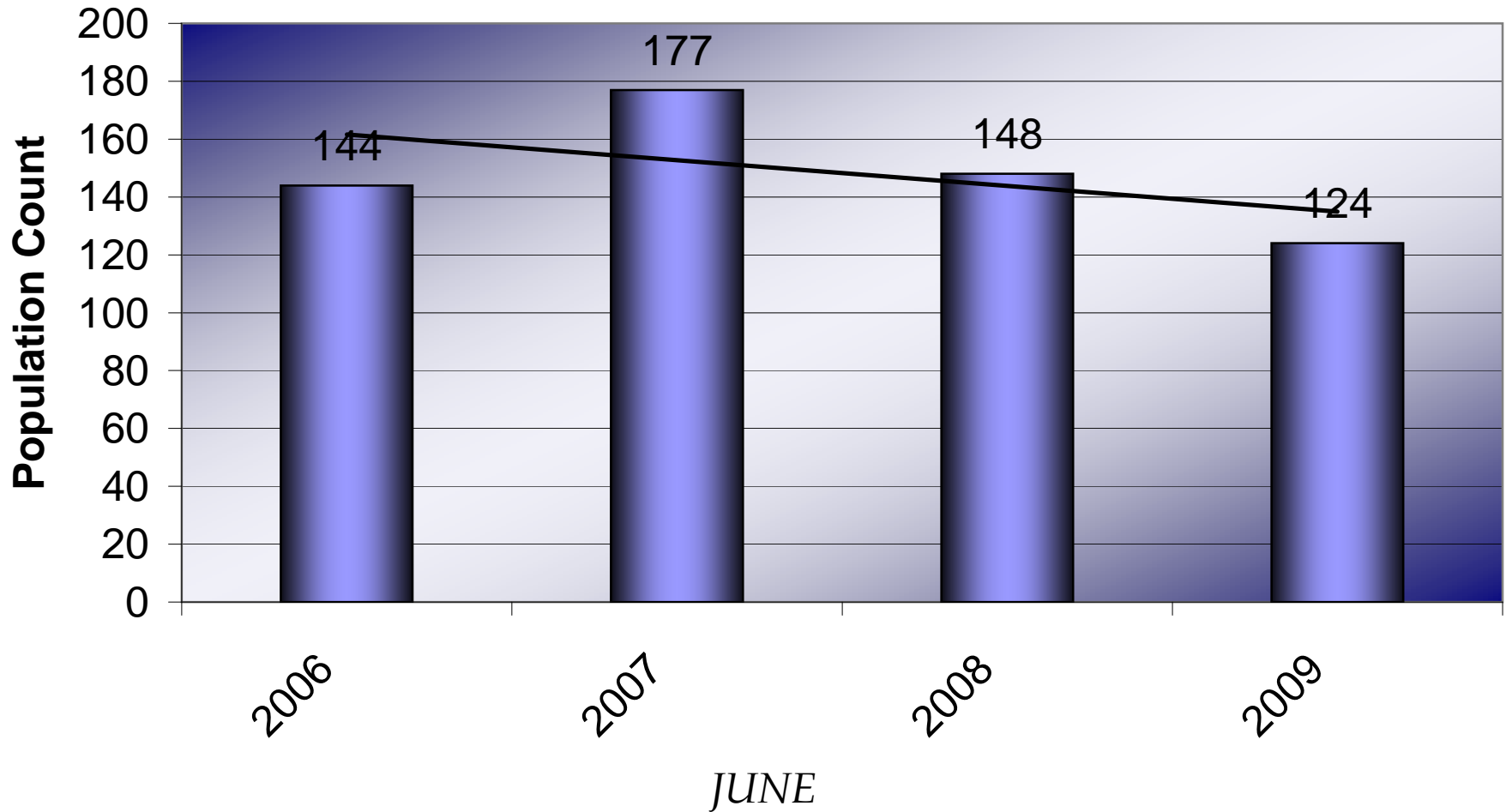
2009 Second Quarter Offender Data

Section One.....Parolee Populations in La Mesa (3 pages)

Section Two.....San Diego County Adult Probationers
Living in La Mesa (2 Pages)

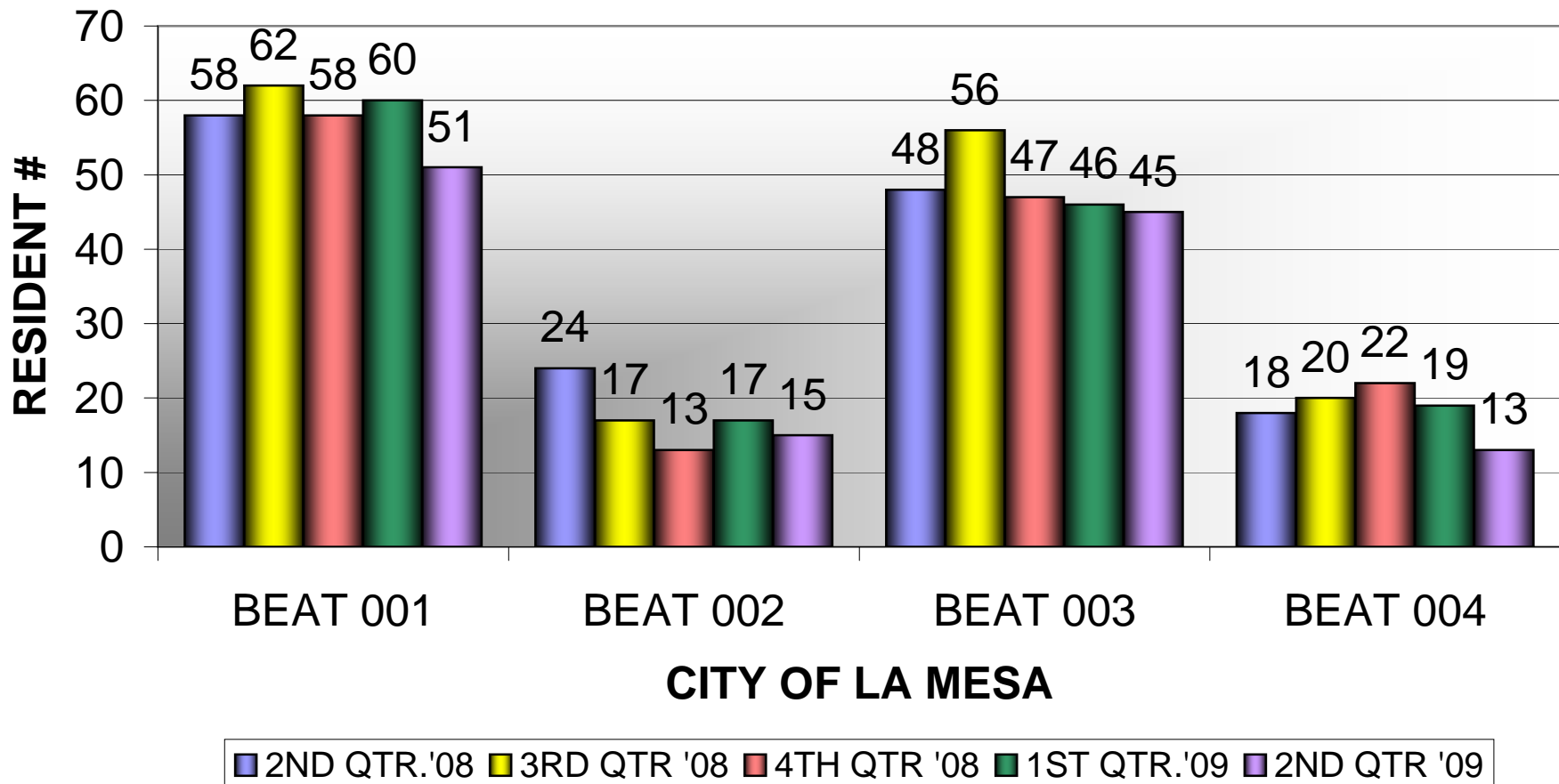
Offender Populations Fluctuations

2ND QTR. Parole Population Residing in La Mesa



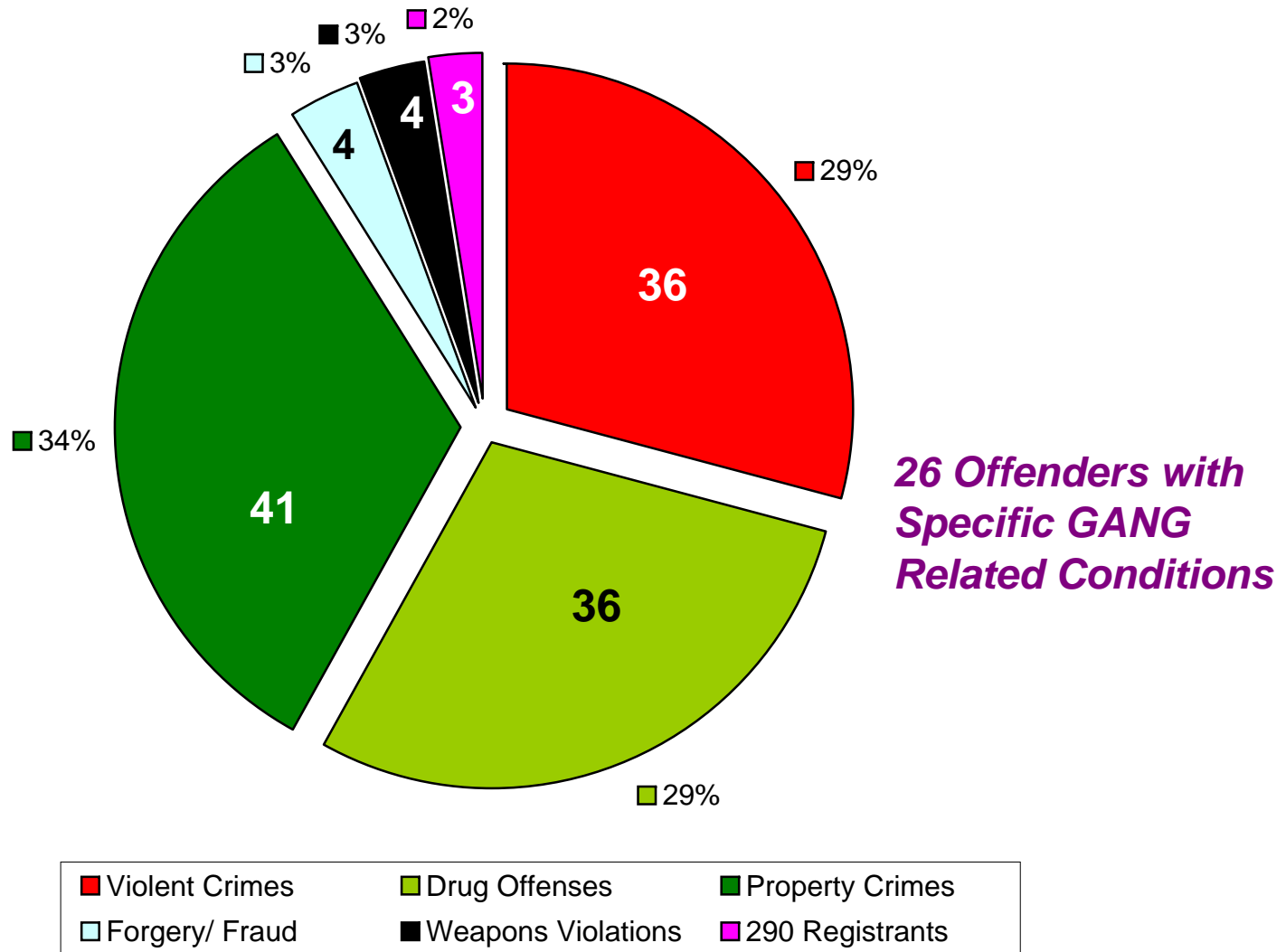
Resident Parolee Quarterly Report
2nd Qtr. 2009

PAROLEE POPULATION CHANGES By Beat



DATA SOURCES: CALIF. DEPT. OF CORRECTIONS
 LEADS PROGRAM,
 FED. PROBATION, AND CAL YOUTH AUTHORITY

Parolees by Offense Type
 Primary Conviction Offenses for 124 Paroled
 Offenders Living in La Mesa



*Second Qtr. 2009 Adult Probation
Living in the City of La Mesa*

Actual Charge / Aggregated Charge Types

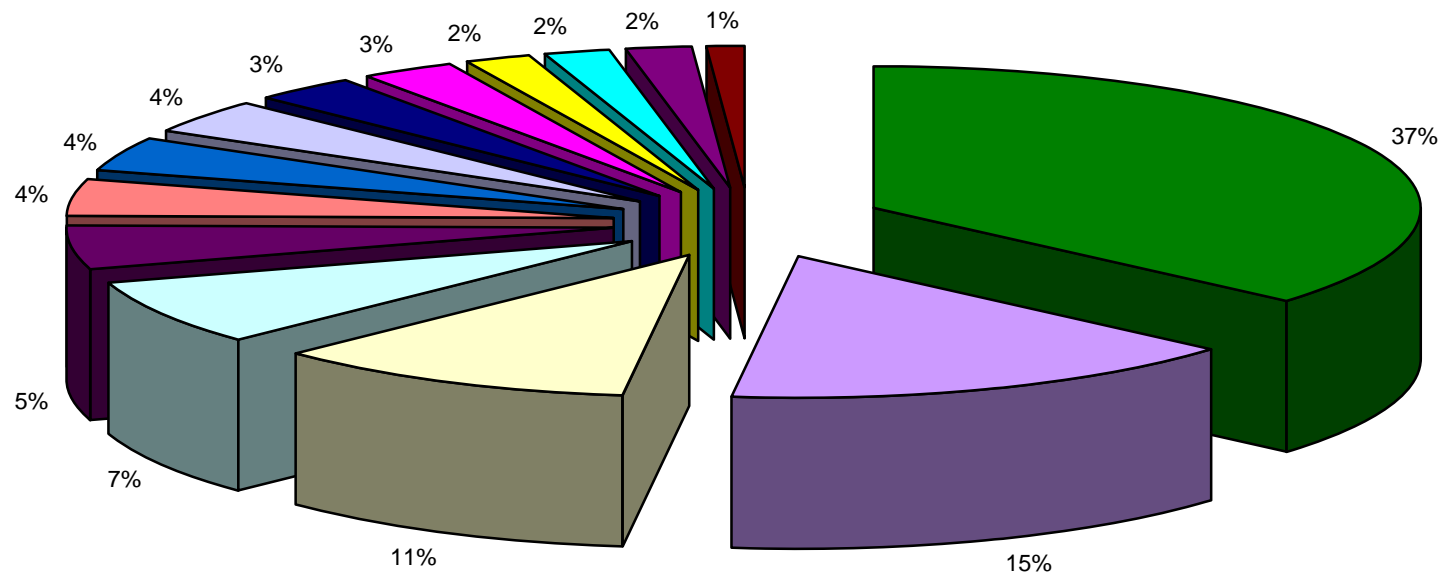
RANK	TOP TEN PROBATION CHARGES	COUNT
1	POSSESS CONTROLLED SUBSTANCE	37
2	BURGLARY	24
3	POSSESS NARCOTIC CONTROLLED SUBSTANCE	23
4	ASSAULT W/DEADLY WEAPON OTHER THAN FIREARM OR GBI FORC	17
5	RECEIVE/ETC KNOWN STOLEN PROPERTY	11
6	INFLECT CORPORAL INJURY ON SPOUSE/COHABITANT	10
6	GRAND THEFT BY EMPLOYEE/SERVANT/ETC (\$400 OR MORE)	10
7	POSS CONTROLLED SUBSTANCE FOR SALE	9
7	DUI	9
8	POSSESS MARIJUANA/HASHISH FOR SALE	8
9	POSSESS CONCENTRATED CANNABIS	7
9	SELL/FURNISH/GIVE/TRANSPORT/ETC MARIJUANA OVER 28.5 GRAMS	7
9	TRANSPORT/SELL CONTROLLED SUBSTANCE	7
9	ROBBERY	7
9	GRAND THEFT:MONEY/LABOR/PROPERTY OVER \$400	7
10	TRANSPORT/SELL CONTROLLED SUBSTANCE	6
10	USE/UNDER INFLUENCE OF CONTROLLED SUBSTANCE	6
10	AUTO THEFT	6

COUNT	PERCENT	CHARGE TYPE
119	37%	Drug Related
50	15%	Theft Related
36	11%	Assaultive Behavior
24	7%	Burglary
16	5%	DUI
14	4%	Sex Crimes
13	4%	Weapons Charge
12	4%	Forgery/Fraud
10	3%	Robbery
9	3%	Serious Traffic
7	2%	Other Misc. Charge
6	2%	Auto Theft
6	2%	Child/Elder Abuse
4	1%	Malicious Mischief
326	100%	Grand Total

259 La Mesa Adults on
County Probation for
326 Charges

54 with Multiple Grants of Probation

SD County Adult Probation Conviction Offenses by Type



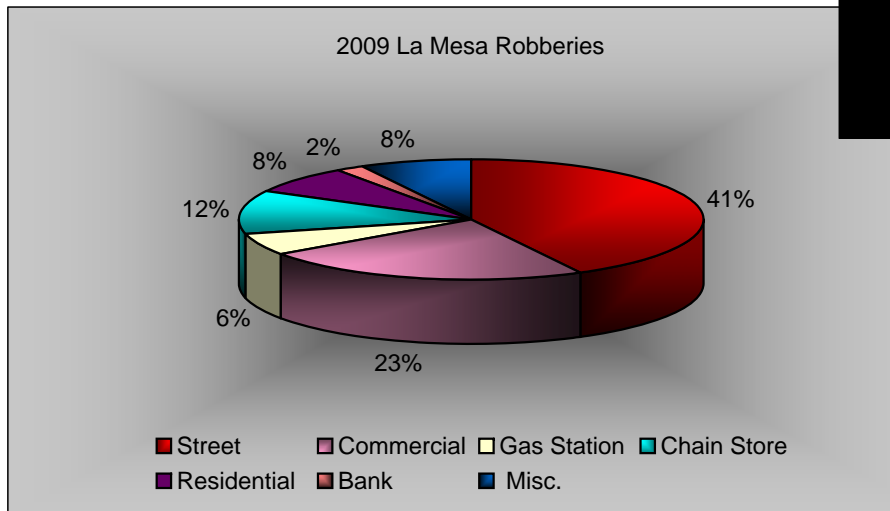
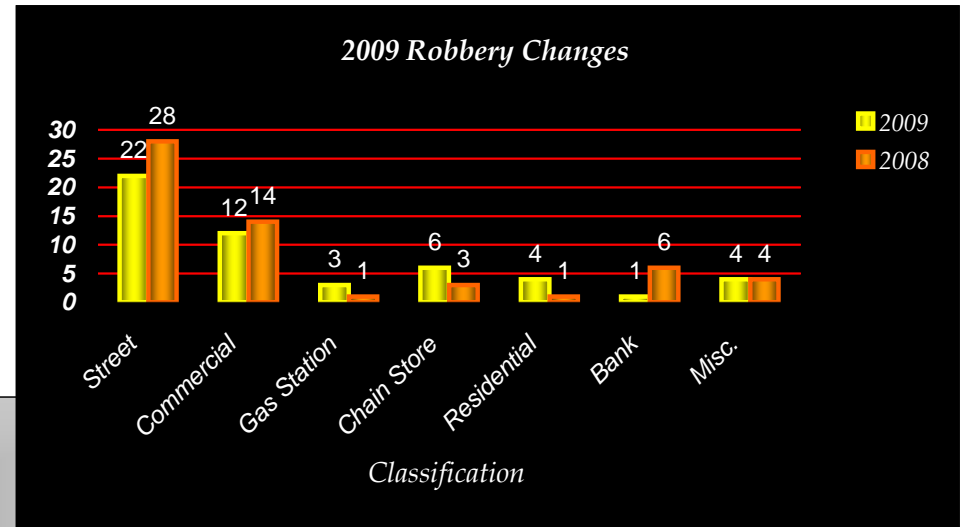
■ Drug Related	■ Theft Related	■ Assaultive Behavior	■ Burglary	■ DUI	■ Sex Crimes	■ Weapons Charge
■ Forgery/Fraud	■ Robbery	■ Serious Traffic	■ Other Misc. Charge	■ Auto Theft	■ Child/Elder Abuse	■ Malicious Mischief

2009 Second Quarter Crime Focus Areas and Events

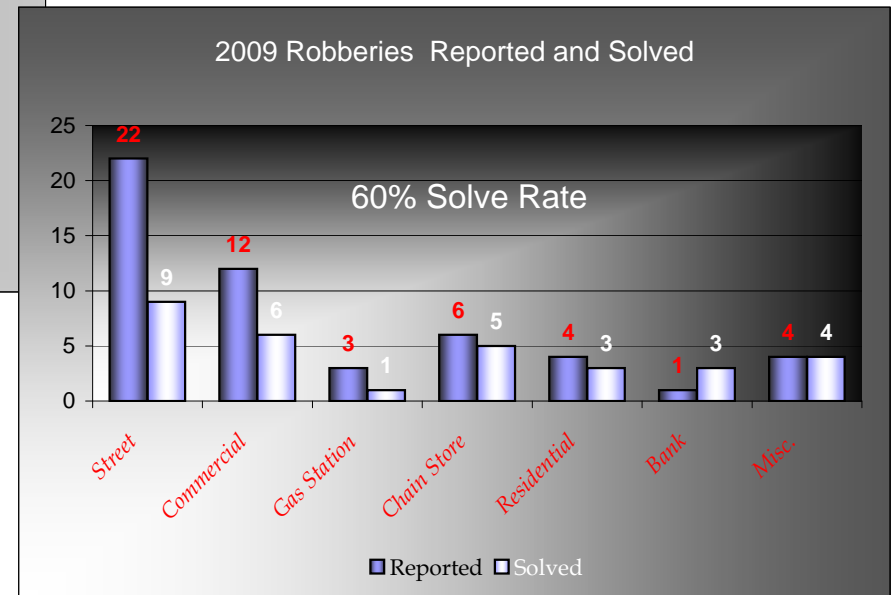
Section One.....Robbery, UCR Part I Sub Categories (Page 1)
Analysis by Pattern and Series (Page 2)

Section Two..... MTS Trolley Crime Report (Part I Crimes)
Trolley Station Location Detail
La Mesa Village Report (Part I Crimes)
Grossmont Center Crime Report (Part I Crimes)
Grossmont Hospital crime Report (Part I Crimes)

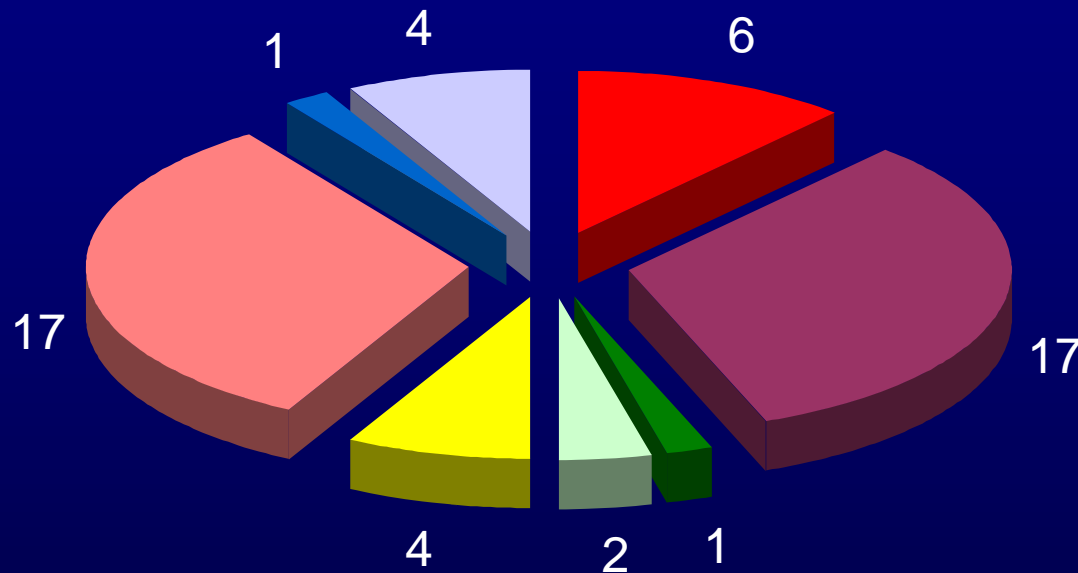
Reported Robberies	Jan - Jun Totals		Change
	2009	2008	
Street	22	28	-21%
Commercial	12	14	-14%
Gas Station	3	1	200%
Chain Store	6	3	100%
Residential	4	1	300%
Bank	1	6	-83%
Misc.	4	4	0%
TOTAL	52	57	-9%



Robbery Solved	2009		Solve Rate
	Reported	Solved	
Street	22	9	41%
Commercial	12	6	50%
Gas Station	3	1	33%
Chain Store	6	5	83%
Residential	4	3	75%
Bank	1	3	300%
Misc.	4	4	100%
TOTAL	52	31	60%



Characteristics, Types, and Relationships of 2009 Robberies YTD 06/30/09



- 6 Trolley Related (4 Occurred at the Station 2 occurred on-board)
- 17 Commercial / Chain Store / Gas Station (5 Series Related-Closed)
- 1 Bank Series (3 Closed Series)
- 2 Street Purse Snatch (Series Related)
- 4 Shoplifts with Resistance
- 17 Street Thugs (1 Series Related)
- 1 Drug Rip-off
- 4 Residential (1 Motel Guest)

Series: A pattern of reported cases believed to be perpetrated a known or an un-named individual or group of individuals acting in concert with each other.

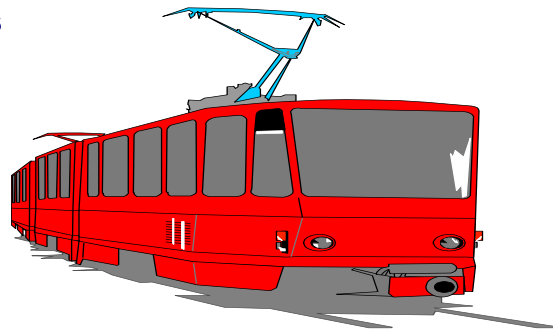
MTS Trolley Crime Report

YTD June 2008/2009

Part I Crimes		YTD June 2009	YTD June 2008	% Change
VIOLENT	Homicide	0	0	N/C
	Rape	0	0	N/C
	Robbery	4	6	-33%
	Aggravated Assault by Vic. Cnt	3	1	200%
PROPERTY	Res. Burglary	N/A	N/A	N/A
	Comm. Burglary	0	0	N/C
	Burglary Total:	0	0	N/C
	Theft	6	3	100%
	Car Prowls (included in Theft Totals)	5	2	150%
	Theft Total:	11	5	120%
	Auto Theft	0	0	N/C
TOTAL VIOLENT:		7	7	0%
TOTAL PROPERTY:		11	5	120%
FBI INDEX:		18	12	50%

Location Addresses

7255 Alvarado Road
 9100 Amaya Ct
 8601 Fletcher Py
 8248 La Mesa Bl
 4250 Spring St.



N/C = Not Calculable

La Mesa Trolley Locations

Part I Crimes Reported to La Mesa Police

YTD June, 2008 and 2009

2008

Station Name	Homicide	Rape	Robbery	Aggravated Assault	Burglary	Larceny/ Theft	Vehicle Theft	Arson	Total	Location Address	Larceny / Car Prowl
Alvarado Road	0	0	0	0	0	0	0	0	0	7255 Alvarado Road	0
Amaya Ct.	0	0	2	0	0	2	0	0	4	9100 Amaya Ct	1
Grossmont Center	0	0	2	1	0	1	0	0	4	8601 Fletcher Py	0
La Mesa Blvd	0	0	1	0	0	0	0	0	1	8248 La Mesa Bl	0
Spring St	0	0	1	0	0	2	0	0	3	4250 Spring St.	1
TOTAL	0	0	6	1	0	5	0	0	12		2

2009

Station Name	Homicide	Rape	Robbery	Aggravated Assault	Burglary	Larceny/ Theft	Vehicle Theft	Arson	Total	Location Address	Larceny / Car Prowl
Alvarado Road	0	0	0	0	0	3	0	0	3	7255 Alvarado Road	2
Amaya Ct.	0	0	0	2	0	2	0	0	4	9100 Amaya Ct	0
Grossmont Center	0	0	1	0	0	2	0	0	3	8601 Fletcher Py	1
La Mesa Blvd	0	0	2	1	0	0	0	0	3	8248 La Mesa Bl	0
Spring St	0	0	1	0	0	4	0	0	5	4250 Spring St.	2
TOTAL	0	0	4	3	0	11	0	0	18		5

La Mesa Village Crime Report

YTD June 2009

Part I Crimes		YTD June 2009	YTD June 2008	% Change
VIOLENT	Homicide	0	0	N/C
	Rape	1	0	N/C
	Robbery	3	1	200%
	Aggravated Assault by Vic. Cnt	2	0	N/C
PROPERTY	Res. Burglary	0	1	-100%
	Comm. Burglary	4	3	33%
	Burglary Total:	4	4	0%
	Theft	9	21	-57%
	Car Prowls (included in Thefts)	3	1	200%
	Theft Total:	12	22	-45%
	Auto Theft	0	0	N/C
TOTAL VIOLENT:		6	1	500%
TOTAL PROPERTY:		16	26	-38%
FBI INDEX:		22	27	-19%

Address Ranges

8000-8499 La Mesa Bl
 4600-4699 Acacia
 4675-4701 Date
 4674-4695 Nebo
 4661-4711 Spring
 4600-4799 Palm
 4700-4799 3rd
 4700-4799 4th



Grossmont Center Crime Report

YTD June 2008/2009

Part I Crimes		YTD June 2009	YTD June 2008	% Change
VIOLENT	Homicide	0	0	N/C
	Rape	0	0	N/C
	Robbery	5	12	-58%
	Aggravated Assault by Vic. Cnt	2	1	100%
PROPERTY	Res. Burglary (Not Applicable)	0	0	N/A
	Comm. Burglary	2	0	N/C
	Burglary Total:	2	0	N/C
	Theft	91	79	15%
	Car Prowls (included in Theft Totals)	17	17	0%
	Theft Total:	106	96	10%
	Auto Theft	8	23	-65%
TOTAL VIOLENT:		7	13	-46%
TOTAL PROPERTY:		116	119	-3%
FBI INDEX:		123	132	-7%

Address

5500 Grossmont Center Dr.

N/C = Not Calculable

N/A = Not Applicable



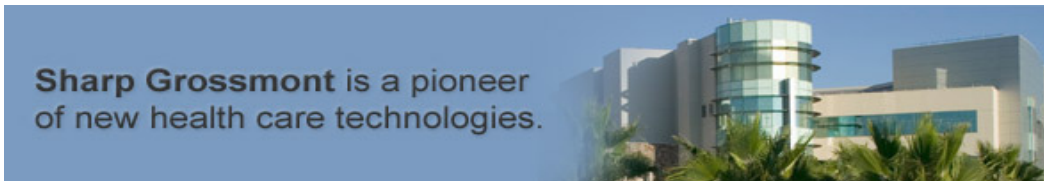
Grossmont Hospital Crime Report

YTD June, 2008/2009

Part I Crimes		YTD June 2009	YTD June 2008	% Change
VIOLENT	Homicide	0	0	N/C
	Rape	0	0	N/C
	Robbery **	2	0	N/C
	Aggravated Assault by Vic. Cnt	0	0	N/C
PROPERTY	Res. Burglary (Not Applicable)	0	0	N/A
	Comm. Burglary	1	0	N/C
	Burglary Total:	1	0	N/C
	Theft	10	3	233%
	Car Prowls (included in Theft Totals)	4	20	-80%
	Theft Total:	14	23	-39%
	Auto Theft	2	9	-78%
TOTAL VIOLENT:		2	0	N/C
TOTAL PROPERTY:		17	32	-47%
FBI INDEX:		19	32	-41%

Address

5555 Grossmont Center Dr.



N/C = Not Calculable

**1st of 2 Robberies involved a Hospital employee
accosted for her purse at
8700 Center Drive

**City of La Mesa
Performance Measure Report
Police Department**

January – June 2009

Police Division: Services

Performance Measure: “Tracking of Graffiti Incidents and Response”

Purpose of Measure: The presence of graffiti in the community can have a significant effect on resident and visitor perceptions about the level of crime in the community and the relative safety of different areas within the community. The frequency of graffiti incidents and the timeliness of the Police Department’s response to those incidents were identified as key measures for the Department’s Community Resource Unit to coordinate and report on.

Graphed Data:

Top Five Locations (Jan - Jun)

Locations	Number of Incidents
Murray Hill Dr.& High Street	33
University Blvd., full length	23
El Cajon Blvd. to 73 rd Street	14
Dallas & Fletcher Parkway & Amaya	14
70 th Street, 4400-4900	12

Total Number of Incidents (Jan – Jun)

2009	Tagger	Gang	Hate	Other
January	21	1	0	5
February	13	2	0	4
March	12	0	0	3
April	18	1	0	4
May	26	2	0	10
June	38	0	0	12
Totals	128	6	0	38
	74.4%	3.5%	0	22.1

Data Analysis: Graffiti reports are obtained through the CAD system, the graffiti hotline, and the Paint-Out-Posse. Murray Hill Drive and the High Street area top the list of locations that have graffiti.

Action To Be Taken: This information is shared with patrol and SED officers, as well as RSVP's, for consideration in their preventive patrol activities. Data collection will continue for the July-December time period. Committee Members will meet on a monthly basis to review data and provide analysis for the next bi-annual review. This information will be passed to the Patrol and RSVP units.

Next Review Date: January 10, 2010

**City of La Mesa
Performance Measure Report
Police Department**

January – June 2009

Police Division: Services

Performance Measure: “Delivery of Crime Prevention Services”

Purpose of Measure:

The Mission Statement of the La Mesa Police Department includes “the prevention of crime” as one of its objectives. The prevention of criminal acts can be accomplished through a variety of means, including the providing of timely information to the public on how they can minimize their risk of being a crime victim.

The La Mesa Police Department first organized a Crime Prevention Unit in the late 1970's, with a primary emphasis on preventing residential burglaries. Since that time the responsibilities of the unit have increased significantly but the underlying theme of the entire unit's programs is that of crime prevention. Given this essential function, the Services Division's staff sought to develop a performance measure that would reflect the source and number of crime prevention presentations made on a monthly basis. From this data, staff will be able to provide analysis indicating the relative demand for these services, sources within the department or community that can be used to enhance the delivery of these services, and provide policy makers with information demonstrating how changing workloads and staffing levels impact delivery of services.

Graphed Data: Data collection began in July 2002. See attached.

2009 January - March Presentations

January		
School Safety Presentation	Lemon Avenue School	SRO Hinton
Child Safety Seat Presentation (X2)	Northmont Elementary School	SRO Hinton
Juvenile Law Class	LMPD Juvenile Diversion	Kingkade and Hinton
Station Tour	LMPD	CPS Lindquist
February		
Juvenile Law Class	LMPD Juvenile Diversion	Kingkade and Hinton
Good Citizen Presentation (X2)	Maryland Avenue School	SRO Hinton
Bullying Presentation (X3)	Rolando Elementary School	SRO Hinton
Alcohol/Drug Presentation	Lemon Avenue School	SRO Hinton
Senior Scams Presentation	Sr. Commission on Aging	CPS Lindquist
Rosebud Managers	LMPD	CPS Gleason
March		
Juvenile Law Class	LMPD Juvenile Diversion	Kingkade & Hinton
Bullying Presentation (X2)	Maryland Avenue School and Pre-Teen academy class	SRO Hinton
Good Citizen Presentation (X2)	Northmont and La Mesa Dale Elementary School	SRO Hinton
6 Station Tours	LMPD	CPS Lindquist
Pre-Teen Citizens Academy	LMPD	CPS Lindquist
Crime Prevention Training	Public Works	CPS Lindquist

2009 April - June Presentations

April		
Rosebud Managers	LMPD	CPS Gleason
Lockdown Drill	La Mesa Middle School	SRO Hinton
Bullying Presentation	Lemon Avenue School	SRO Hinton
Juvenile Law Class	LMPD Juvenile Diversion	Kingkade & SRO Hinton
Every 15 Minutes Presentations (X4)	Helix, Featheringill Mortuary	CPS Lindquist
May		
Rosebud Managers	LMPD	CPS Gleason
Career Day	Bancroft School	SRO Hinton
Juvenile Law Class	LMPD Juvenile Diversion	Kingkade & SRO Hinton
Good Citizenship (X2)	Rolando Elementary School	SRO Hinton
Every 15 Minutes	Helix High School	SRO Hinton
Every 15 Minutes Presentation	La Mesa Lions Club	CPS Lindquist
Every 15 Minutes Parent Presentation	Helix	CPS Lindquist
Every 15 Minutes Program	Helix	CPS Lindquist
June		
Rosebud Managers	LMPD	CPS Gleason
Bullying Presentation	La Mesa Dale Elem. School	SRO Hinton
Juvenile Law Class	LMPD	Kingkade/ SRO Hinton
Active Shooter Planning	East Co. Law Enforcement	SRO Hinton
Safety Presentation	New Life Presbyterian	CPS Lindquist
Home Security Presentation	Rolando Women's Club	CPS Lindquist

Data Analysis: The first half of 2009, compared with the same period in 2008, showed a slight increase in Commercial Security Inspections due to some business burglaries and formal requests. The Crime Prevention video that focused on business crime prevention was introduced to the public.

Neighborhood Watch Meetings Heather Lindquist

Comparing this same period last year, Neighborhood Watch meetings decreased (4 versus 9).

Residential Security Inspections

Residential Security Inspections (RSI) were about the same (4 versus 4) for the first half of 2008 and 2009.

Commercial Security Inspections

Commercial Security Inspections (CSI) increased (6 versus 4)

Presentations

The Department's long standing practice has been to take every opportunity that comes along to try to facilitate as many Special Presentations as possible. There were about the same amount of presentations (50 versus 49) in the first half of 2009 versus the first half of 2008.

Complexes in Crime Free Multi/Mobile Housing Program

There have been 2 new properties certified in the first half of 2009. The number of complexes participating in our version of the Crime Free Multi/Mobile Housing Program is now thirty. Currently we are meeting the demand for this program in so far as we attend to requests and help complexes meet the program requirements.

Action To Be Taken:

The Committee will continue to monitor the above listed performance areas.

Next Review Date: January 10, 2010

Attachments:

Crime Prev. Performance Measures Matrix 2008-2009
Crime Prev. Performance Measures Matrix 2007-2008
Crime Prev. Performance Measures Matrix 2006-2007
Crime Prev. Performance Measures Matrix 2005-2006
Crime Prev. Performance Measures Matrix 2004-2005
Crime Prev. Performance Measures Matrix 2003-2004
Crime Prev. Performance Measures Matrix 2002-2003
Master Summary Chart

CRIME PREVENTION PERFORMANCE MEASURES FY 2008-2009

	July	Aug.	Sept.	Oct.	Nov.	Dec.	Jan.	Feb.	Mar.	Apr.	May	Jun.
Neighborhood Watch Meetings	5	4	0	1	2	2	0	0	3	0	0	1
Residential Security Inspections	0	0	1	0	0	0	1	3	0	0	0	1
Commercial Security Inspections	2	0	0	0	2	0	3	0	3	0	0	0
Special Miscellaneous Presentations*	10	10	10	11	18	10	5	9	13	8	9	6
Complexes in Crime Free Multi/Mobile Housing Program	28	28	28	28	28	28	28	28	28	28	28	30

	Q-1/Summer	Q-2/Fall	Q-3/Winter	Q-4/Spring	Total
Neighborhood Watch Meetings	9	5	3	1	18
Residential Security Inspections	1	0	4	1	6
Commercial Security Inspections	2	2	6	0	10
Special Miscellaneous Presentations*	30	39	15	23	107
Complexes in Crime Free Multi/Mobile Housing Program	28	28	30	30	30

CRIME PREVENTION PERFORMANCE MEASURES FY 2007-2008

	July	Aug.	Sept.	Oct.	Nov.	Dec.	Jan.	Feb.	Mar.	Apr.	May	June
Neighborhood Watch Meetings	1	4	1	0	0	3	2	0	1	2	1	3
Residential Security Inspections	0	0	0	0	0	0	0	4	0	0	0	0
Commercial Security Inspections	0	4	2	1	1	0	0	1	0	0	1	2
Special Miscellaneous Presentations*	5	6	4	4	7	1	3	8	8	13	8	9
Complexes in Crime Free Multi/Mobile Housing Program	28	28	28	28	28	28	28	28	28	28	28	28

	Q-1/Summer	Q-2/Fall	Q-3/Winter	Q-4/Spring	Total
Neighborhood Watch Meetings	6	3	3	6	18
Residential Security Inspections	0	0	4	0	4
Commercial Security Inspections	6	2	1	3	12
Special Miscellaneous Presentations*	15	12	19	30	76
Complexes in Crime Free Multi/Mobile Housing Program	28	28	28	28	28

CRIME PREVENTION PERFORMANCE MEASURES FY 2006-2007

	July	Aug.	Sept.	Oct.	Nov.	Dec.	Jan.	Feb.	Mar.	Apr.	May	June
Neighborhood Watch Meetings	1	3	3	4	1	0	0	0	1	1	1	0
Residential Security Inspections	1	0	1	0	1	0	2	0	0	0	0	3
Commercial Security Inspections	1	3	0	2	6	0	0	0	0	1	4	3
Special Miscellaneous Presentations*	9	12	2	7	10	3	1	4	6	5	8	3
Complexes in Crime Free Multi/Mobile Housing Program	28	28	28	28	28	28	28	28	28	28	28	28

	Q-1/Summer	Q-2/Fall	Q-3/Winter	Q-4/Spring	Total
Neighborhood Watch Meetings	7	5	1	2	15
Residential Security Inspections	2	1	2	3	8
Commercial Security Inspections	4	8	0	8	20
Special Miscellaneous Presentations*	23	20	11	16	70
Complexes in Crime Free Multi/Mobile Housing Program	28	28	28	28	28

CRIME PREVENTION PERFORMANCE MEASURES 2005-2006

	July	Aug.	Sept.	Oct.	Nov.	Dec.	Jan.	Feb.	Mar.	Apr.	May	June
Neighborhood Watch Meetings	2	1	1	2	2	1	0	0	2	2	1	1
Residential Security Inspections	1	0	0	2	1	1	0	2	5	0	1	3
Commercial Security Inspections	1	1	1	1	2	2	0	2	2	1	1	1
Special Miscellaneous Presentations*	4	4	3	5	6	13	8	9	11	11	7	5
Complexes in Crime Free Multi/Mobile Housing Program	28	28	28	28	28	28	28	28	28	28	28	28

	Q-1/Summer	Q-2/Fall	Q-3/Winter	Q-4/Spring	Total
Neighborhood Watch Meetings	4	5	2	4	15
Residential Security Inspections	1	4	7	4	16
Commercial Security Inspections	3	5	4	3	15
Special Miscellaneous Presentations*	11	24	28	23	86
Complexes in Crime Free Multi/Mobile Housing Program	28	28	28	28	28

CRIME PREVENTION PERFORMANCE MEASURES 2004-2005

	July	Aug.	Sept.	Oct.	Nov.	Dec.	Jan.	Feb.	Mar.	Apr.	May	June
Neighborhood Watch Meetings	0	12	2	0	0	0	1	0	0	1	2	3
Residential Security Inspections	0	0	0	0	0	0	1	0	0	0	1	0
Commercial Security Inspections	0	1	1	0	0	0	1	1	1	0	0	0
Special Miscellaneous Presentations*	14	7	12	12	5	1	0	0	2	0	4	3
Complexes in Crime Free Multi/Mobile Housing Program	28	28	28	28	28	28	28	28	28	28	28	28

	Q-1/Summer	Q-2/Fall	Q-3/Winter	Q-4/Spring	Total
Neighborhood Watch Meetings	14	0	1	6	21
Residential Security Inspections	0	0	1	1	2
Commercial Security Inspections	2	0	3	0	5
Special Miscellaneous Presentations*	33	18	2	7	60
Complexes in Crime Free Multi/Mobile Housing Program	28	28	28	28	28

CRIME PREVENTION PERFORMANCE MEASURES 2003-2004

	July	Aug.	Sept.	Oct.	Nov.	Dec.	Jan.	Feb.	Mar.	Apr.	May	June
Neighborhood Watch Meetings	1/0	4/1	3/0	3/0	5/0	3/0	1/0	5/3	2	0	0	2
Residential Security Inspections	2/0	1/0	0/0	0/0	0/0	1/0	2/0	1/0	2	2	2	1
Commercial Security Inspections	0/0	1/0	1/0	0/0	0/0	0/0	5/0	0/0	1	0	1	0
Special Miscellaneous Presentations*	5/0	2/0	8/0	8/0	7/0	5/7	6/0	10/2	8	2	12	7
Complexes in Crime Free Multi/Mobile Housing Program	22	22	23	23.	23	23	23	23	23	23	23	28

	Q-1/Summer	Q-2/Fall	Q-3/Winter	Q-4/Spring	Total
Neighborhood Watch Meetings	9	11	11	2	33
Residential Security Inspections	3	1	5	5	14
Commercial Security Inspections	2	0	6	1	9
Special Miscellaneous Presentations*	15	27	26	21	89
Complexes in Crime Free Multi/Mobile Housing Program	23	23	23	28	28

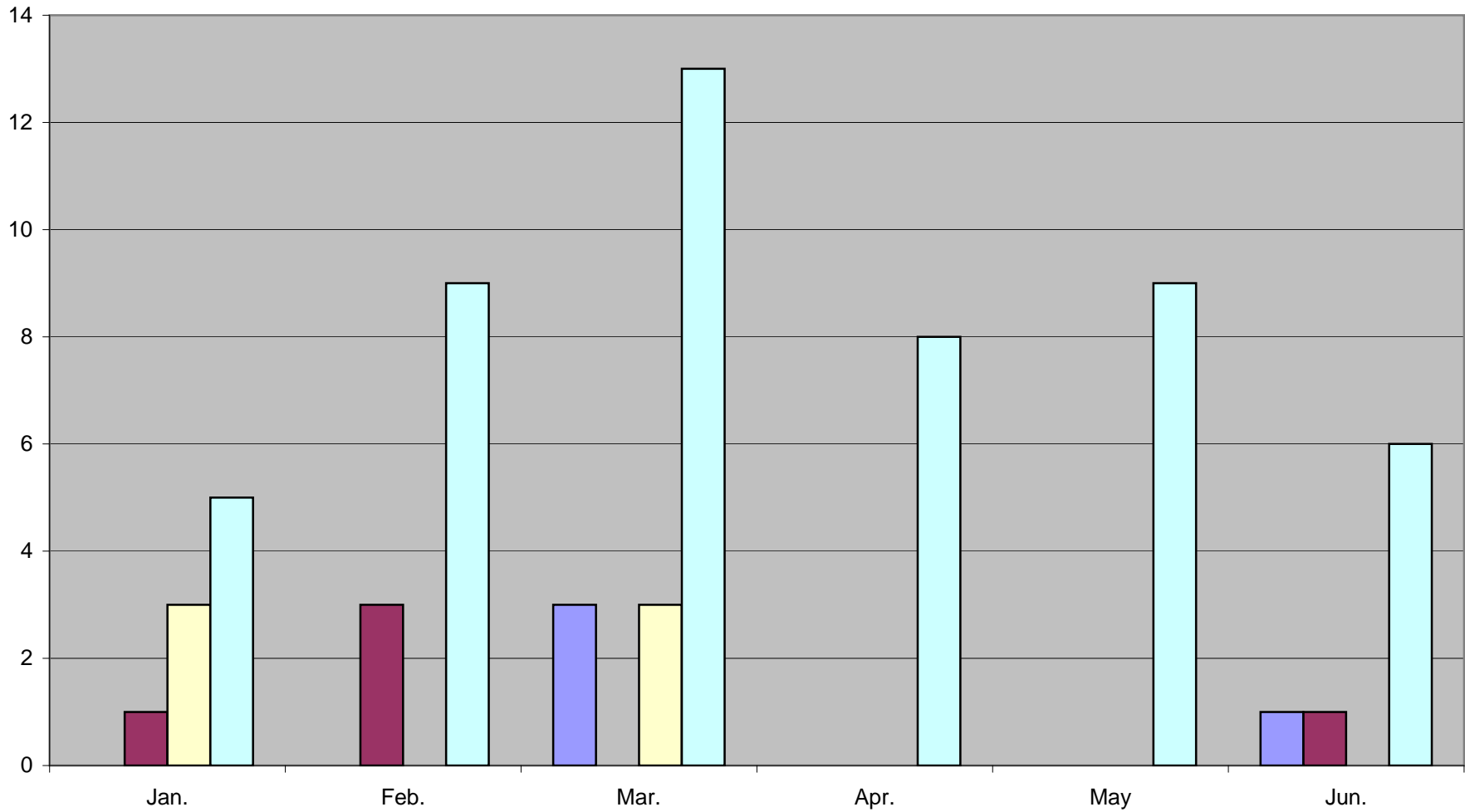
CRIME PREVENTION PERFORMANCE MEASURES 2002-2003

	July	Aug.	Sept.	Oct.	Nov.	Dec.	Jan.	Feb.	Mar.	Apr.	May	June
Neighborhood Watch Meetings	1/0	3/0	3/0	5/0	3/0	0/0	1/0	1/0	4/0	1/0	3/0	1/0
Residential Security Inspections	2/0	2/0	0/0	1/0	2/0	1/0	1/0	1/0	1/0	0/0	0/0	0/0
Commercial Security Inspections	2/0	1/0	0/0	1/0	0/0	0/0	0/0	1/0	0/0	0/0	0/0	0/0
Special Miscellaneous Presentations*	1/0	2/0	7/0	8/0	7/2	1/0	2/3	5/1	3/2	2/2	6/1	5/0
Complexes in Crime Free Multi/Mobile Housing Program	21	22	22	22	22	22	22	22	22	22	22	22

	Q-1/Summer	Q-2/Fall	Q-3/Winter	Q-4/Spring	Total
Neighborhood Watch Meetings	7	8	6	5	26
Residential Security Inspections	4	4	3	0	11
Commercial Security Inspections	3	1	1	0	5
Special Miscellaneous Presentations*	10	18	16	16	60
Complexes in Crime Free Multi/Mobile Housing Program	22	22	22	22	22

Crime Prevention Performance Measures Summary Chart Jan 2009 - Jun 2009

■ Neighborhood Watch Meetings ■ Residential Security Inspections ■ Commercial Security Inspections ■ Special Miscellaneous Presentaions



**City of La Mesa
Performance Measure Report
Police Department**

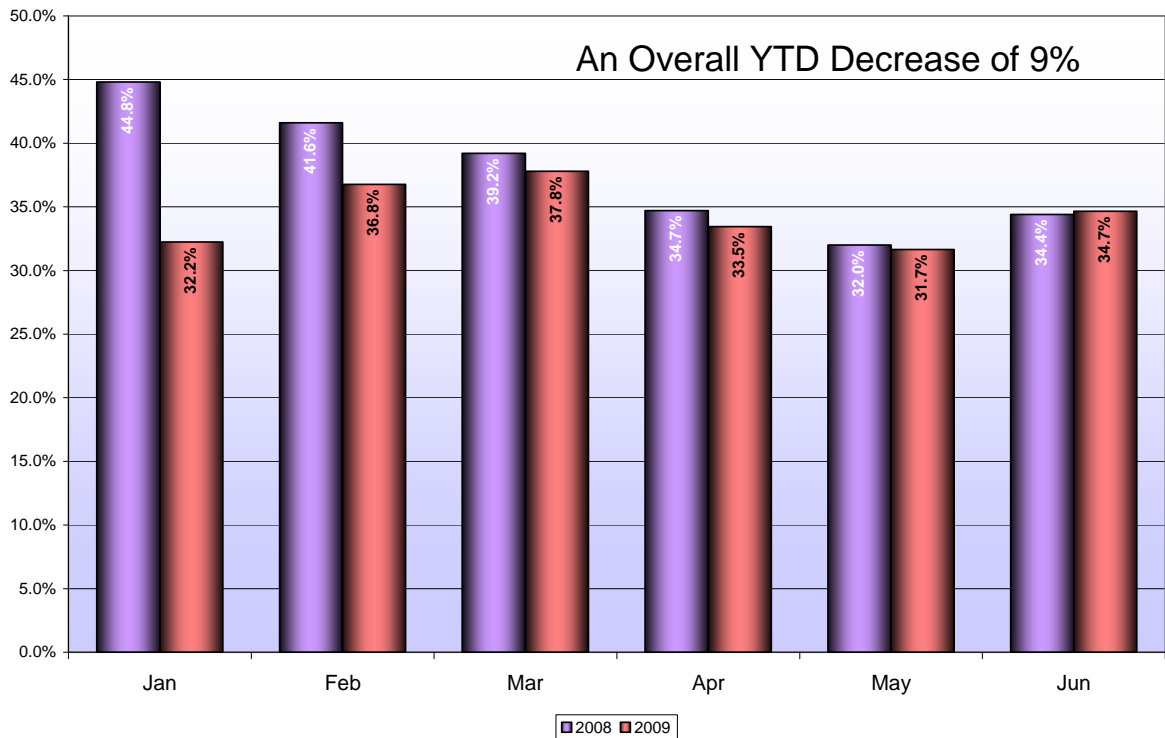
Jan – Jun 2009

Division: Patrol Division

Performance Measure: “Directed vs. Non-directed Patrol Time”

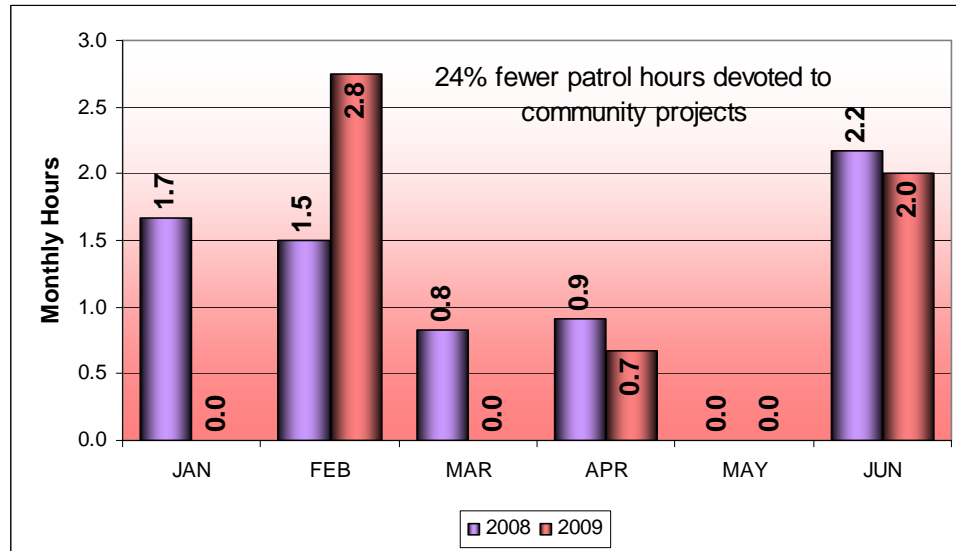
Purpose of the Measure: To determine the amount of “directed” time during a patrol shift that an officer is required to handle radio calls and administrative duties. Also, to determine the amount of “non-directed” time that an officer has available to work on proactive activities, to include community projects, proactive enforcement, and traffic enforcement. The goal of this committee is to attempt to identify 30% - 40% of an officer’s total work day as non-directed time.

Data Analysis:



The graph depicted above shows compared results for mid year 2009 by month, against the previous mid year for directed vs. non-directed patrol time. Over the past five and a half years, the percentage of non-directed time remained fairly static and within the target range. So far this year, officers are averaging 34.4% of their patrol time as non-directed time. This is still within target range but it's a

9% decrease over the year to date average for 2008. There is a corresponding 24% decrease in Community Project time.



A comparison of hours devoted to proactive community projects is depicted in the second graph. By mid year 2009, the amount of time dedicated to community projects compared to the same period in 2008 decreased 24%, from 7.1 hours accrued in 2008, to 5.4 hours accrued in 2009. This decrease is due in large part to the impact of the Special Enforcement Detail, where strategic operations are addressed separately from regular patrol time. Thus, the number of hours dedicated to community projects by the regular force has dramatically decreased.

In April of 2008, staff recommended that the Department return to the definitions of “Out of Service” time (Directed Patrol Time) that had been in force prior to the inception of these performance measures. In 2003, the Department had adopted a modified version of the Out of Service definitions after a six month test period which ended 05/31/03. This return to the pre-existing method of calculating directed time would have the anticipated effect of returning us to the historic levels of 23%-25% of non-directed or available pro-active time. Accordingly, for May and June of 2008, the per cent of directed time should have dipped to approximately 25%. But they didn’t then and haven’t up to the current period. The main difference between those adopted for performance measures and those that pre-existed (and have again become the business practice) are found in computing the administrative tasks, paperwork, transports and evidence processing associated with officer initiated activity. If the initiated activity was the result of actions taken during non-directed time, the time spent was logged but not computed as “out of service time”. Now they will be considered as “out of service”/directed time. Despite the change, Officers have been able to maintain the target levels of these performance measures.

Action To Be Taken: Officers should continue to document their activity within the current recommended guidelines. Squad sergeants should review those guidelines with their squads periodically and make a concerted effort to check their recapped activity for Problem Oriented Policing minutes. Non-directed patrol time will continue to be reported to staff and supervisors on a monthly basis in the “Monthly Part I Crimes and Patrol Statistics” report compiled by Crime Analysis.

Next Review Date: Jan 10, 2010

**City of La Mesa
Performance Measure Report
Police Department**

January-June 2009

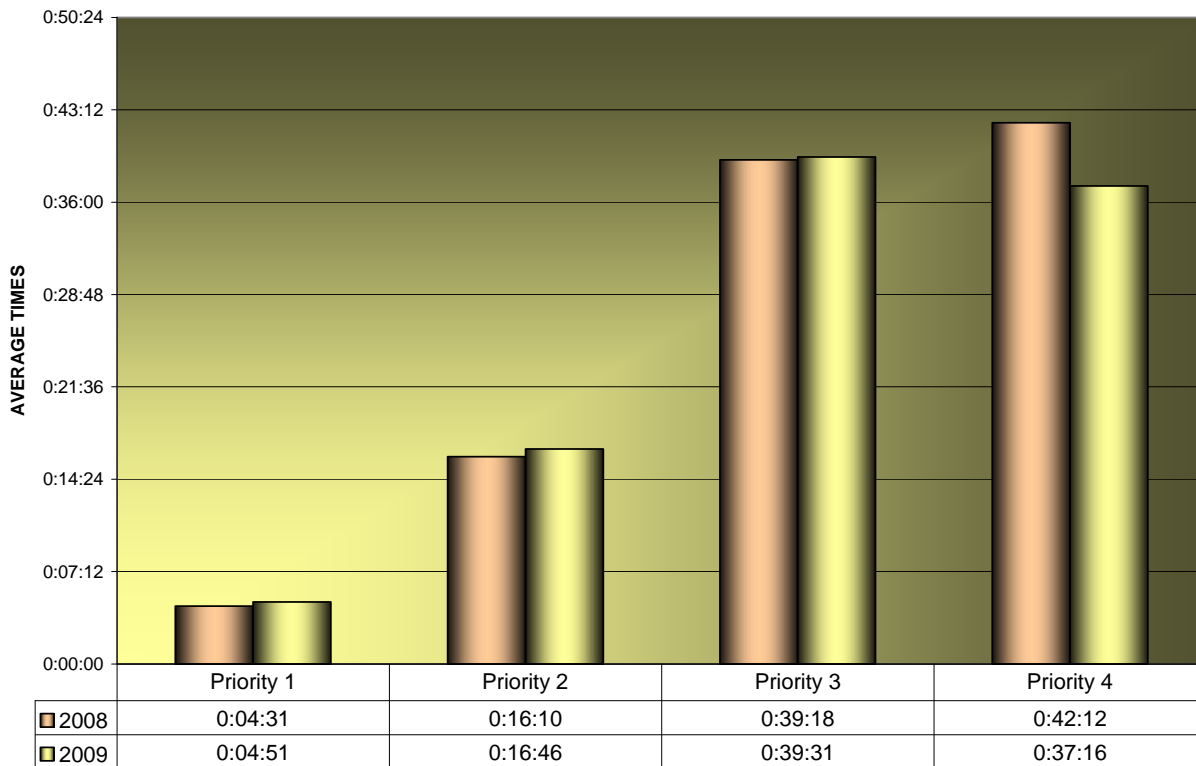
Division: Services

Performance Measure: Response Times by Priority

Purpose of the Measure: To measure the average amount of time between when a call is received to the time an officer arrives on the scene.

Graphed Data:

Total Average Response Times



2008 vs 2009 Mid Year Averages

Data Analysis:

Total average response times for the first half of 2009 were slightly higher than for the same period in 2008. Our total average response times for Priority 1 calls increased by 20 seconds, but still remain at less than 5 minutes from receipt of call to unit arrival at the scene.

Our average response times to Priority 2 calls increased by 36 seconds, remaining at under 17 minutes from receipt of call to unit arrival at scene.

Average response times to Priority 3 calls increased by 13 seconds, while Priority 4 response times decreased by 4 minutes, 56 seconds.

The volume of dispatched calls for the first half of 2009 decreased by 1.6% compared to the same period last year. There were 19,744 calls dispatched compared to 20,075 during the first half of 2008.

Next Review Date: January 10, 2010