

La Mesa Police Department

Operations Report

2008



Alan Lanning

Chief of Police

Law Enforcement Operations and Statistics

Part 1 Crimes and Patrol Statistics

At the end of 2008 our crime rate had declined by 8% compared to 2007. The most significant declines came in Commercial Burglaries, down 40%, and Auto Theft, down 33%. Three areas of concern are noted however, due to increased activity in the second half of 2008. They are Residential Burglaries, up 17%, Vehicle Burglaries, up 33%, and Petty Thefts, up 13%.

In 2008 the number of Violent Crimes (Homicide, Rape, Robbery, Aggravated Assault) increased by 2% (four cases overall). The only notable change was in the number of Rapes, which increased from 7 in 2007 to 14 in 2008. As discussed in last quarter's report, to date, these cases have involved circumstances where the suspect and victim had some type of prior relationship, including having recently met, and not instances where the victim was attacked by a stranger. Some cases have been closed as "unfounded." Going back to 2003, the number of Rape cases has ranged from 7 to 12 annually.

In 2008 there was a slight drop in the number of robberies, from 125 in 2007 to 122 in 2008. Once again, "Street Robberies" was the largest single category with 60 cases, up 9% from 2007. Generally, our robbery trends have followed those of the San Diego region. In 2008 a number of steps were taken on a regional basis to address the rise in robberies over the past several years and these are described in an attached memo to the San Diego County Chiefs' & Sheriff's Association from Capt. Aceves, who chaired the Regional Robbery Advisory Group.

In property crime categories there was a drop of 9% overall, compared to 2007. The number of Residential Burglaries remained essentially the same for 2008, compared to 2007 but as noted, began to increase in the second half of the year.

Vehicle Burglaries continue to be one of our most serious crime problems. As noted in last quarter's report, in late August we began to see increasing numbers of Vehicle Burglaries and that trend continued throughout the last quarter of the year. The Department has used a number of means to provide activity and prevention information to the community and will be looking at ways to increase these efforts in 2009.

In 2008 we had generally positive results in our Crime Focus areas, with La Mesa Village, the Trolley, and Grossmont Center all having declines in overall crime rates. Only the Grossmont Hospital area had an increase in Part 1 crimes, from 30 cases to 49, for an increase of 63%, with the majority of that increase being due to Vehicle Burglaries.

From mid October through December the Grossmont Hospital area was the subject of directed patrol efforts, aimed at reducing the incidence of Vehicle Burglaries and

theft related crimes. During this time period officers used traffic enforcement contacts, field interviews, citizen contacts, parking lot patrols, foot patrols, and business checks to increase visibility in the area. The operation was somewhat successful, in that the number of Part 1 crimes in the area dropped to ten in the fourth quarter, compared to an average of thirteen for the first three quarters.

During the holiday shopping season the Department once again provided added patrols to the Grossmont Center area. These patrols began on the day after Thanksgiving and continued through December 31st. The added patrols were provided through a combination of SED Officers, Reserve Officers, and RSVP's.

The Patrol Division statistics for 2008 are included in your report and indicate a slight increase in calls for service over 2007, of 2%. Officer initiated activity rose by 9%, due to increases in all categories of traffic enforcement contacts. The total number of staff hours increased by 2% and, together with the decrease in the crime rate, was likely an important factor in lowering our average response times (call received to first officer on scene) for Priority 1, 2, and 3 calls, as shown in the attached Performance Measure, "Response Times by Priority." The average response time for Priority 1 calls dropped to four minutes, thirty-three seconds, one of the lowest times recorded since we began this Performance Measure.

In August the State Emergency Communications Office conducted a fiscal and operational review of our 9-1-1 operations. They found that the Department answered 99.16% of 9-1-1 calls in less than 10 seconds. This is well above the State standard of 90% and the consultant conducting the review noted it is among the best emergency answer times he has seen throughout California.

I will be making a presentation to the City Council in February, to provide an overview of our crime statistics from 2008, and will make a second presentation at the March 17th workshop on more specific crime issues and recommendations.

Special Enforcement Detail

Due to current staffing shortages, SED has been operating with only 2 or 3 personnel for much of the 4th Quarter. During the 4th quarter SED personnel focused their efforts in several areas. They conducted saturation patrols in the eastern half of the City, targeting burglaries. They also continued to arrest prostitutes and patrol the El Cajon Boulevard area. Beginning with the day after Thanksgiving, they began periodic saturation patrols of Grossmont Center and the Fletcher Parkway corridor, in conjunction with Reserve Officers and RSVP's, for high visibility in these areas throughout the holiday shopping season.

SED personnel were involved in two significant search warrant operations during the past quarter. The first was generated by a neighborhood concern in which the suspect neighbor was using rifles for target practice. Patrol officers were called several times to the residence because of the shooting. The suspect would tell

police he was either shooting a BB gun or paintball gun. The suspect eventually started poisoning his neighbor's bamboo, which led to a search warrant for the poison. While serving the warrant numerous handguns and rifles were found, including a rifle with a homemade silencer. With the assistance of the California Department of Justice Firearms Division, the weapon was confiscated and the suspect charged with several felonies.

The other search warrant was served at a "chop shop" located at an Amaya Drive residence. During this operation numerous car parts, various drugs, and two firearms were seized.

During the last week of December SED assisted detectives with a carjacking that had happened in the area of WalMart at Grossmont Center. SED assisted with arresting the suspect and then conducted follow up at a residence associated with the suspect. During a search of this residence, SED officers found a firearm which belonged to a convicted felon. SED did this search in conjunction with El Cajon PD burglary detectives and gang officers, along with RATT investigators.

SED 4th Quarter and Annual Activity Summary				
Activity	4th Quarter 2008	4th Quarter 2007	2008	2007
Felony Arrests	9	21	68	78
Misdemeanor Arrests	25	20	92	59
Field Interviews	80	210	393	723
Citations	5	20	29	130
Vehicle Impounds	2	0	23	23
Probation Searches	52	92	157	295
Parole Searches	19	28	81	137

Registered Sex Offenders

At year end the number of registered sex offenders living in La Mesa was 75, an increase from the 68 reported in last quarter's report and within the normal population range for the City, which has typically varied from the mid 70's to the mid 80's.

Parolees and Probationers

Attached to your report are three charts showing the parolee population in La Mesa as of year end and the types of offenses involved. The 140 parolees identified as living in La Mesa at the end of the year is essentially unchanged from the end of 2007, when it was 139. The number has dropped from prior Quarterly Reports this year, when it was as high as 155.

Two charts are included in this quarter's report on the number of adults living in La Mesa who are on probation and a summary of the offenses for which probation was granted.

Domestic Violence

Attached to your report is a summary of reported Domestic Violence cases for the past three years. The number of cases for 2008 is 394, up approximately 13% from 2007.

Traffic Collisions / Citations / Enforcement Operations

Enforcement operations funded by the 2009 "Click It Or Ticket" grant began in October 2008. Over the course of the fourth quarter of 2008 officers issued 275 citations during these enforcement operations and impounded 12 vehicles.

During the fourth quarter of 2008 five locations were identified as the most common collision locations in the City. None of these locations had previously been noted as a common collision location this year.

2008 4th Quarter Leading Collision Locations/Causes		
Location	Number	Cause(s)
El Paso St. @ Lake Murray Blvd.	4	Improper Turn (3), Violation of Right of Way (1)
70 th St. @ Alvarado Rd.	3	Unsafe Speed (1), Following Too Close (1), Improper Turn (1)
70 th St. @ Tower St.	3	Unsafe Speed (2), DUI (1)
Center Dr. @ Grossmont Center Dr.	3	Right of Way (3)
Jackson Dr. @ Zeta St.	3	Improper Turn (1), Violation of Right of Way (1), DUI (1)

During the 4th Quarter of the year the Traffic Unit received 11 traffic complaints/enforcement requests. The three most prominent locations are listed here, along with actions taken by the Traffic Unit.

Parkway Middle School: Traffic congestion, unsafe pedestrian actions by students, and illegal parking by parents at drop off and pick up times.

The Traffic Unit has worked with the School Resource Officer to address these issues through announcements made via the school PA system, articles in the PSTA newsletter, and automated telephone calls to parents' homes. Traffic officers have provided added enforcement time to the area of the school, issuing citations and warnings.

Intersection of Severin Drive & Gregory Drive: Morning and afternoon traffic congestion resulting from the beginning and end of the school day at Northmont Elementary School.

Traffic officers have provided added enforcement time to the area, issuing citations and warnings. In addition, the Department's Speed Warning Trailer has been placed on Severin Drive, to aid in slowing traffic approaching the intersection at times of congestion.

3800 Block of Murray Hill Drive: Morning rush hour traffic congestion resulting in vehicles driving in the bike lane of south bound Murray Hill Drive to turn onto west bound Waite Drive.

Traffic officers have provided added enforcement time to the area, issuing citations and warnings.

2008-2007 Citations & Citations Summary				
Violation	2008		2007	
	Citations	Collisions	Citations	Collisions
Right of Way	185	48	85	37
Speeding	1251	65	890	60
Following Too Close	3	7	2	5
Violation of Sign/Signal	1158	36	823	33
Unsafe Backing/Start	8	17	5	16
Improper Turn	125	100	131	110
Wrong Side of Road	43	4	51	7
Unsafe Lane Change	14	0	20	7
Passing Violation	29	2	54	0
Pedestrian Right of Way	5	10	5	6
Pedestrian Violation	177	10	112	11
Alcohol Related	34	53	34	56
Other Hazardous	41	108	29	121
License/Registration	961	0	680	0
Equipment	1752	1	1295	0
Littering	13	0	17	0
Other Non-Hazardous	1362	2	861	1
Total	7161	463	5094	470

DUI Prevention and Enforcement

During the 4th quarter of the year Traffic Unit personnel conducted three DUI enforcement operations, all funded through Office of Traffic Safety grant programs. The first operation was held on November 14th and consisted of a DUI warrant sweep, resulting in 10 arrests.

A DUI Checkpoint Operation was held on December 13th in the 8900 block of La Mesa Boulevard. 875 vehicles passed through the checkpoint, with 32 drivers directed to secondary screening, resulting in 4 DUI arrests, along with 11 citations and 11 vehicle impounds.

A DUI saturation patrol was conducted on New Year's Eve, producing 2 DUI arrests in addition to another felony arrest for a weapons violation, 10 citations, and 3 vehicle impounds.

DUI Arrests & Collisions Summary / 2002-2008		
Year	Arrests	Collisions
2002	167	61
2003	199	53
2004	219	52
2005	233	55
2006	260	69
2007	235	56
2008	238	53

Community Resource Unit Activities and Information

RSVP and Storefront Activities

2008 Activity by Quarter					
Activity	1st Qtr	2nd Qtr	3rd Qtr	4th Qtr	YTD
Patrol Hours	3,576	3,642	3,758	3,550	14,526
Vacation Home Checks	114	297	348	326	1,082
"You Are Not Alone" home visits	69	69	61	114	313
Warnings for 72 hour parking	354	471	456	372	1,653
Impounds for 72 hour parking	17	15	9	13	54
Parking Citations	386	356	263	282	1,287
Net Storefront Revenue	\$14,049	\$17,420	\$17,348	\$15,696	\$64,513
RSVP Staff	57	57	58	56	

Comparison of 2008 – 2006 Activity			
Activity	2008	2007	2006
Patrol Hours	14,526	13,990	13,716
Vacation Home Checks	1,082	951	726
“You Are Not Alone” home visits	313	357	427
Warnings for 72 hour parking	1,653	1,695	2,542
Impounds for 72 hour parking	54	76	126
Parking Citations	1,287	1,461	1,783
Net Storefront Revenue	\$64,513	\$65,146	\$75,769
RSVP Staff	56	56	56

School Resource Officers

Officer McNamara – Helix Charter High SRO: In addition to her routine duties, Off. McNamara worked with faculty to develop a new hall pass program and is also working with students and staff on a presentation of the “Every 15 Minutes” DUI education program for the end of the school year. She also organized and ran three campus “ID Checkpoint” operations, which insure persons and students walking about the campus are authorized to do so. She met with the owner of the taco shop adjacent to the school and, with the owner’s cooperation, began a program in conjunction with campus security to clear the parking lot every day after school, to minimize problems associated with students and others lingering in the lot. In coordination with other officers, she conducted patrols after school targeting pedestrian traffic violations and trespassing.

This quarter she held 31 student/parent meetings, 24 staff meetings, conducted 6 criminal investigations, made 14 classroom presentations, conducted 3 home welfare checks, and sent 5 educational e-mails to staff, along with attending classes herself for “Safe Schools Planning.”

Off. McNamara was at Helix High on December 16th, the date of the reported armed subject being on campus. This was later found to be a false report and the District Attorney’s Office has been asked to evaluate the case for charges against the student who made the false report. Off. McNamara acted quickly to advise the Patrol Sergeant of the reported subject, provide description and direction of travel information to responding officers, and assist in the lockdown and search of the campus.

Officer Hinton – La Mesa-Spring Valley School District SRO: The fourth quarter of 2008 included a two week period of time in October and a one week period of time in December, when La Mesa-Spring Valley School District schools were not in session.

During this quarter Officer Hinton completed the following tasks for one or more of the schools: 6 drug education presentations, 3 Juvenile Law Classes, administered 3 teacher/parent/student conferences, conducted 2 actual school lockdown procedures during active crimes outside of, but near school grounds, conducted 1 practice school lockdown drill, attended the Project Alert and Threats of Violence Training Classes, attended a school Traffic Safety meeting at the district office, and participated in the yearly Chargers Junior Training Camp at Parkway Middle School with StarPal.

Crime Prevention Specialists

During the fourth quarter CPS Mike Gleason continued his work on graffiti prevention/abatement and liaison with the Rosebud Managers' group, working on a quarter-time basis.

As noted in last quarter's report, there is a continuing consensus of the participating owners and managers in the Rosebud Lane area that conditions have improved significantly since last year, as reflected in calls-for-service and general appearance of the area. In large part, this is a result of focusing attention on Schoolridge Lane with the assistance of Code Enforcement Officer Allen Edwards and the members of the Special Enforcement Detail.

The anti-graffiti volunteer team has been revitalized and there are now 5 members, with the hope of adding 2 more members in February 2009. As noted in last quarter's report, the graffiti backlog from 2007 has been brought current so that, with the exception of weekends and absences, graffiti reported to the Graffiti Hot Line or the City's website is covered within 48 hours of the report's receipt.

During this quarter Crime Prevention Specialist Heather Lindquist conducted five Neighborhood Watch Meetings along with a number of community presentations. These included a drug education presentation at Christ Lutheran School, a police car demonstration at the Young Imaginations School, an Identity Theft presentation at the La Mesa Lions Club, and ten tours of the La Mesa Police Station for various school classes.

Crime Prevention Initiatives

In May 2007 Department staff met with the City Manager and Asst. City Manager to discuss current Crime Prevention programs and strategies, how to enhance those, and what new strategies might be adopted to improve crime prevention services. The crime prevention initiatives that were identified have been completed and Police Department staff have now focused on maintaining new procedures that were adopted in this process. These initiatives have been developed into a new "Target for Action" as well and are recapped here.

Hire a full-time Crime Prevention Specialist **(Complete)**

Produce and mail crime prevention DVD to targeted audiences **(Complete)**

- The first of two DVD's has been completed and provides crime prevention information focusing on residential areas and personal safety. It is now available on the City website. Work has started on the second DVD, which will focus on crime prevention information for businesses and shopping areas.

Develop and implement web site based crime prevention information **(Complete)**

- Crime update and prevention information has been incorporated into the new website. Crime Prevention Specialist Heather Lindquist reviews current information and adds updates as appropriate.

Develop and implement web site based "crime alerts" **(Complete)**

- A "Crime Alert" feature is part of the home page of the new web site. The crime alert tab has two buttons, green and red. A green button signifies existing published content, while a flashing red button indicates that there is urgent new information available. Alert information is being added as identified by staff, our Crime Analyst, or Crime Prevention Specialist.

Use of residential and commercial security inspection letters **(Complete)**

- New letters have been developed and are in use. A formalized process has been implemented to identify recipients, using the Department's Computer Aided Dispatch system, RSVP staff, and our Crime Prevention Specialist.

Outreach by City leaders to community groups **(Ongoing)**

- Police Department staff have developed a set of "talking points" for use by Council Members and selected City staff.

Crime prevention message on City vehicles **(Complete)**

- "Crime Prevention" bumper stickers have been placed on all marked City vehicles and a supply maintained to use as new vehicles are added to the fleet.

Crime prevention training for selected City staff **(Complete)**

- All the training for City staff has been completed. Lt. Bond and Crime Prevention Specialist Lindquist worked with Department heads to determine the scheduling and appropriate personnel for the training. The Department

received many compliments from the employees on the training that was provided.

Police Department Citizens' Academy **(Complete)**

- The first class of our reintroduced Citizens' Academy graduated on July 3rd, following six weeks of once-a-week sessions on the various aspects of the Department's operations and police work in general. Twenty-three community members attended and all were very complimentary of the Department, our staff, and especially Crime Prevention Specialist Lindquist.

Revitalize Neighborhood Watch Program **(Complete)**

- Crime Prevention Specialist Lindquist met with the current Neighborhood Watch Block Captains, representing about twenty groups, on May 29th. Together they developed a list of ideas and recommendations that will be refined for implementation. Over the past six months the number of identified Neighborhood Watch groups has grown from 70 to 84. CPS Lindquist has developed an e-mail network covering more than 95% of the groups, which provides the members with general crime and prevention information. The same network is used to send information directly to groups on an individual basis when there area is affected by a particular crime or crime series.

New Neighborhood Watch signs **(Complete)**

- The Police Department has purchased an initial supply of new Neighborhood Watch signs, which incorporate the new City logo. The signs are being distributed in coordination with our other Neighborhood Watch efforts and a formal unveiling was held in conjunction with "National Night Out" on August 5th.

Attachments:

2008 Part 1 Crimes & Patrol Statistics Report
Domestic Violence Statistics
Resident Parolees/Probationers Quarterly Report
Crime Focus Areas and Events Reports
 Robbery Statistics
 Auto Theft Recap
 La Mesa Village
 MTS Trolley
 Grossmont Center
 Grossmont Hospital
Regional Robbery Advisory Group memo, dated January 7, 2009
Performance Measure Reports
 "Tracking of Graffiti Incidents and Response"

“Directed vs. Non-directed Patrol Time”
“Response Times by Priority”
“Delivery of Crime Prevention Services”

La Mesa Police Department
4th Quarter 2008, Part I Crimes
and Patrol Statistics

CITY OF LA MESA
A. E. Lanning, Chief of Police



Prepared by: Crime Analysis

January 7, 2009

2008 Year-End Crime Statistics

Section 1.....Uniform Crime Report Part I Crimes (2 pages)

Section 2.....Patrol Statistics (1 page)

Section 3.....Crime Rates By Census Tracts (1 page)

Section 4.....Domestic Violence Statistics (1 page)

La Mesa Police - 4th Quarter Crime Statistics - 2008



DATA	2007				2008				Year to Date Change		
	1st Qtr	2nd Qtr	3rd Qtr	4th Qtr	1st Qtr	2nd Qtr	3rd Qtr	4th Qtr	THIS YTD	LAST YTD	YTD % Change
VIOLENT CRIMES:											
Homicide	0	0	0	0	0	0	0	0	0	0	0%
CLEARED	0	0	0	0	0	0	0	0	0	0	0%
Rape	0	2	3	2	3	5	4	2	14	7	100%
CLEARED	1	2	0	1	3	6	1	1	11	4	175%
Robbery	27	41	30	27	25	32	31	34	122	125	-2%
CLEARED	12	23	15	13	15	11	9	12	47	63	-25%
Aggravated Assault	33	31	22	17	32	20	24	27	103	103	0%
CLEARED	27	29	17	13	24	20	17	20	81	86	-6%
PROPERTY CRIMES:											
Res. Burglary	59	46	41	42	50	37	52	50	189	188	1%
Comm. Burglary	58	53	43	38	38	31	13	34	116	192	-40%
Burglary Total:	117	99	84	80	88	68	65	84	305	380	-20%
CLEARED	14	15	13	7	7	9	8	5	29	49	-41%
Theft> \$400	120	133	106	137	101	141	130	137	509	496	3%
Car Prowls	184	171	150	187	156	183	208	245	792	692	14%
Theft \$400 or less	206	213	211	229	191	229	233	241	894	859	4%
Theft Total:	510	517	467	553	448	553	571	623	1403	1355	4%
CLEARED	64	75	69	80	46	51	57	49	203	288	-30%
Auto Theft	147	117	107	128	85	106	69	74	334	499	-33%
CLEARED	15	10	9	15	5	9	5	5	24	49	-51%
VIOLENT:	60	74	55	46	60	57	59	63	239	235	2%
CLEARED	67%	73%	58%	59%	70%	65%	46%	52%	58%	65%	*-9%
PROPERTY:	774	733	658	761	621	727	705	781	2042	2234	-9%
CLEARED	12%	14%	14%	13%	9%	9%	10%	8%	13%	17%	*-34%
FBI INDEX:	834	807	713	807	681	784	764	844	2281	2469	-8%
CLEARED	16%	19%	17%	16%	15%	14%	13%	11%	17%	22%	*-27%
VIO. RATE PER 1,000 POP.									4.2/K	4.2/K	
PROP. RATE PER 1,000 POP.									36.0/K	39.7/K	
INDEX RATE PER 1,000 POP.									40.3/K	43.9/K	

*Percentage change by number of crimes cleared



AUTOMATED
REGIONAL JUSTICE
INFORMATION SYSTEM

DATA

4TH QUARTER CRIME STATISTICS - Robbery & Theft Breakdown

	2007				2008				Year to Date Change		
	1st Qtr	2nd Qtr	3rd Qtr	4th Qtr	1st Qtr	2nd Qtr	3rd Qtr	4th Qtr	THIS YEAR	LAST YEAR	YTD % Change
Robbery											
Street/Highway	11	14	18	12	11	17	14	18	60	55	9%
Commercial	8	9	10	5	7	7	6	6	26	32	-19%
Gas or Service Station	0	1	0	1	0	1	1	2	4	2	100%
Chain Store	0	5	1	1	2	1	2	3	8	7	14%
Residential	1	5	0	2	0	1	3	3	7	8	-13%
Bank	4	4	0	5	4	2	3	0	9	13	-31%
** Miscellaneous	3	3	1	1	1	3	2	2	8	8	0%
TOTAL	27	41	30	27	25	32	31	34	122	125	-2%
39% solved	12	23	15	13	15	11	9	12	47	63	-25%
Theft											
Pocket-Picking	1	1	1	0	0	1	0	0	1	3	-67%
Purse Snatching	1	3	2	5	1	2	4	0	7	11	-36%
Shoplifting	59	67	83	71	57	55	54	54	220	280	-21%
From Motor Vehicles	153	135	113	144	115	134	168	210	627	545	15%
Motor Vehicle Parts & Acc.	31	36	37	43	41	49	40	35	165	147	12%
Bicycles	6	2	6	3	3	5	10	5	23	17	35%
From Buildings	41	44	32	46	45	61	42	31	179	163	10%
From Coin Operated Machines	2	4	2	5	5	6	0	2	13	13	0%
All Others	32	54	41	49	25	57	45	41	168	176	-5%
TOTAL	326	346	317	366	292	370	363	378	1403	1355	4%
14% solved	64	75	69	80	46	51	57	49	203	288	-30%

N/C = Not Calculable

La Mesa Police - Patrol Statistics 4th Qtr. - 2008

(Source: Officer's Daily Report- Patrol Logs)

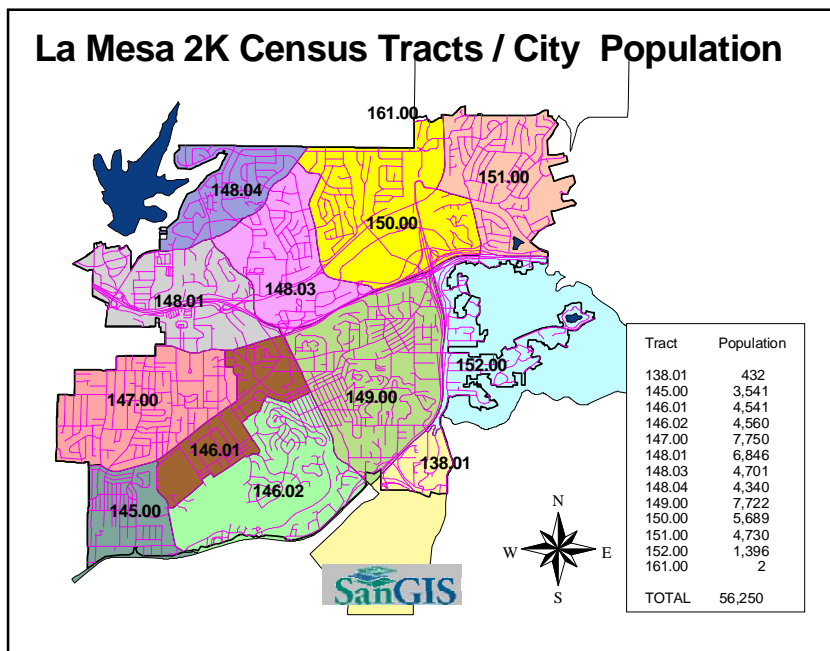
		2007				2008				Year to Date Change		
		1st Qtr	2nd Qtr	3rd Qtr	4th Qtr	1st Qtr	2nd Qtr	3rd Qtr	4th Qtr	THIS YEAR	LAST YEAR	YTD % Change
Origin:	Primary	4,997	5,370	5,579	5,166	5,192	5,487	5,631	5,213	21,523	21,112	2%
	Cover	3,968	4,047	4,088	3,558	3,707	4,006	3,936	3,844	15,493	15,661	-1%
	Officer Initiated	5,620	5,718	7,270	5,779	7,149	7,119	6,159	6,191	26,618	24,387	9%
Dispo:	Arrest	408	438	437	399	425	416	447	419	1,707	1,682	1%
	Report	1,704	1,465	1,271	1,348	1,387	1,455	1,483	1,418	5,743	5,788	-1%
	No Report	12,341	13,083	15,148	12,345	14,089	14,645	13,723	13,062	55,519	52,917	5%
Reports:	Part I	716	728	611	705	622	640	662	694	2,618	2,760	-5%
	Other	782	638	650	700	725	789	724	759	2,997	2,770	8%
	Follow-ups	117	76	68	85	57	60	72	78	267	346	-23%
Arrests:	Felony	174	194	169	160	139	120	132	111	502	697	-28%
	Misdemeanor	202	241	223	201	207	261	212	220	900	867	4%
	Citizen	34	31	27	25	25	34	33	37	129	117	10%
	Warrant	65	65	86	78	67	60	79	67	273	294	-7%
	Detentions	27	39	52	33	61	45	42	57	205	151	36%
Traffic:	Hazardous Citations	972	1,178	985	758	1,196	1,588	1,178	1,162	5,124	3,893	32%
	Non-Hazardous Cites	328	297	505	269	492	527	438	393	1,850	1,399	32%
	Parking Citations	866	996	1,359	1,353	1,273	1,207	1,327	1,004	4,811	4,574	5%
	Warnings	904	941	1,155	1,062	1,358	1,195	1,101	996	4,650	4,062	14%
	Accidents / PDO's	95	92	72	82	88	72	93	87	340	341	0%
	Impounds	290	324	260	223	348	294	241	244	1,127	1,097	3%
Contacts:	Field Interviews	490	561	687	516	514	422	316	229	1,481	2,254	-34%
	Citizen Contacts	486	661	991	808	987	1,173	971	872	4,003	2,946	36%
	Security Checks	1,675	1,492	1,802	1,702	1,918	1,872	1,501	1,729	7,020	6,671	5%
Other:	Transports	406	394	373	335	347	337	355	355	1,394	1,508	-8%
	Community Project Time/mins.	1,367	970	850	0	240	185	1,110	310	1,845	3,187	-42%
Regular Hours		13,991	13,546	13,588	12,948	13,705	13,531	13,903	14,035	55,174	54,072	2%
Overtime Hours		1,198	1,218	1,247	1,402	949	1,328	1,107	940	4,324	5,064	-15%
Non Directed Time		37.8%	35.5%	38.5%	36.9%	41.9%	33.7%	32.5%	34.7%	34.5%	37.0%	-7%

Crime Rates By Census Tracts

January 01, 2008 through December 31, 2008

Violent Crimes	Murder Rape Robbery Agravated Assault
Census Tract	Crimes Per Thousand Population
150.00	9.67
146.01	9.25
148.01	5.11
15100	3.59
145.00	2.82
147.00	2.32
146.02	2.19
148.04	1.84
152.00	1.43
148.03	1.28
138.01	0.00
161.00	0.00
City Wide Average	4.2

Property Crimes	Burglary Larceny Motor Vehicle Theft Arson
Census Tract	Crimes Per Thousand Population
150.00	102.65
138.01	43.98
148.03	42.97
146.01	35.67
148.01	31.55
152.00	27.22
151.00	26.22
145.00	22.31
146.02	21.49
148.04	16.59
147.00	15.23
161.00	0.00
City Wide Average	36.0



Current Estimated
Population:
56,666

Domestic Violence Statistics

Penal Code Section 13700(a) defines "Abuse", with respect to Domestic Violence, as "Intentionally or recklessly causing or attempting to cause bodily injury, or placing another person in reasonable apprehension of imminent serious bodily injury to himself or herself, or another."

Penal Code Section 13700(b) defines "Domestic Violence" as "Abuse committed against an adult or fully emancipated minor who is a spouse, former spouse, cohabitant, former cohabitant, or person with whom the suspect has had a child or is having or has had a dating or engagement relationship. For purposes of this subdivision, "cohabitant means two unrelated adult persons living together or a substantial period of time, resulting in some permanency of relationship. Factors that may determine whether persons are cohabiting include, but are not limited to, (1) sexual relations between the parties while sharing the same living quarters, (2) sharing of income or expenses, (3) joint use or ownership of property, (4) whether the parties hold themselves out as husband and wife, (5) the continuity of the relationship, and (6) the length of the relationship."

Mo./Yr.	YTD	Guns	Knives	Other	Hands	No Weapon	Total
12-05	352	0	1	1	31	5	38
01-06	30	0	2	5	18	5	30
02-06	42	0	0	0	12	0	12
03-06	82	0	2	10	22	6	40
04-06	117	1	1	6	21	6	35
05-06	150	0	1	7	22	3	33
06-06	181	0	0	4	25	2	31
07-06	218	0	1	5	29	2	37
08-06	240	1	0	5	12	4	22
09-06	269	0	1	5	13	10	29
10-06	303	0	0	3	25	5	34
11-06	335	1	0	2	27	2	32
12-06	363	0	0	0	23	5	28
01-07	26	0	0	2	22	2	26
02-07	59	1	1	1	27	3	33
03-07	94	1	1	1	29	3	35
04-07	129	0	0	2	31	2	35
05-07	165	0	1	3	28	4	36
06-07	193	1	0	2	24	1	28
07-07	230	0	0	5	29	3	37
08-07	254	0	0	2	19	3	24
09-07	270	0	0	1	14	1	16
10-07	295	0	0	0	22	3	25
11-07	322	0	1	4	19	3	27
12-07	347	0	0	1	24	0	25
01-08	32	0	1	9	21	1	32
02-08	60	1	0	1	25	1	28
03-08	84	0	1	2	15	6	24
04-08	115	0	3	1	21	6	31
05-08	138	0	0	3	17	3	23
06-08	174	0	0	2	30	4	36
07-08	212	0	1	1	30	6	38
08-08	247	0	1	3	25	6	35
09-08	286	0	0	4	29	6	39
10-08	309	0	0	3	18	2	23
11-08	353	1	1	6	35	1	44
12-08	385	0	0	5	32	4	41

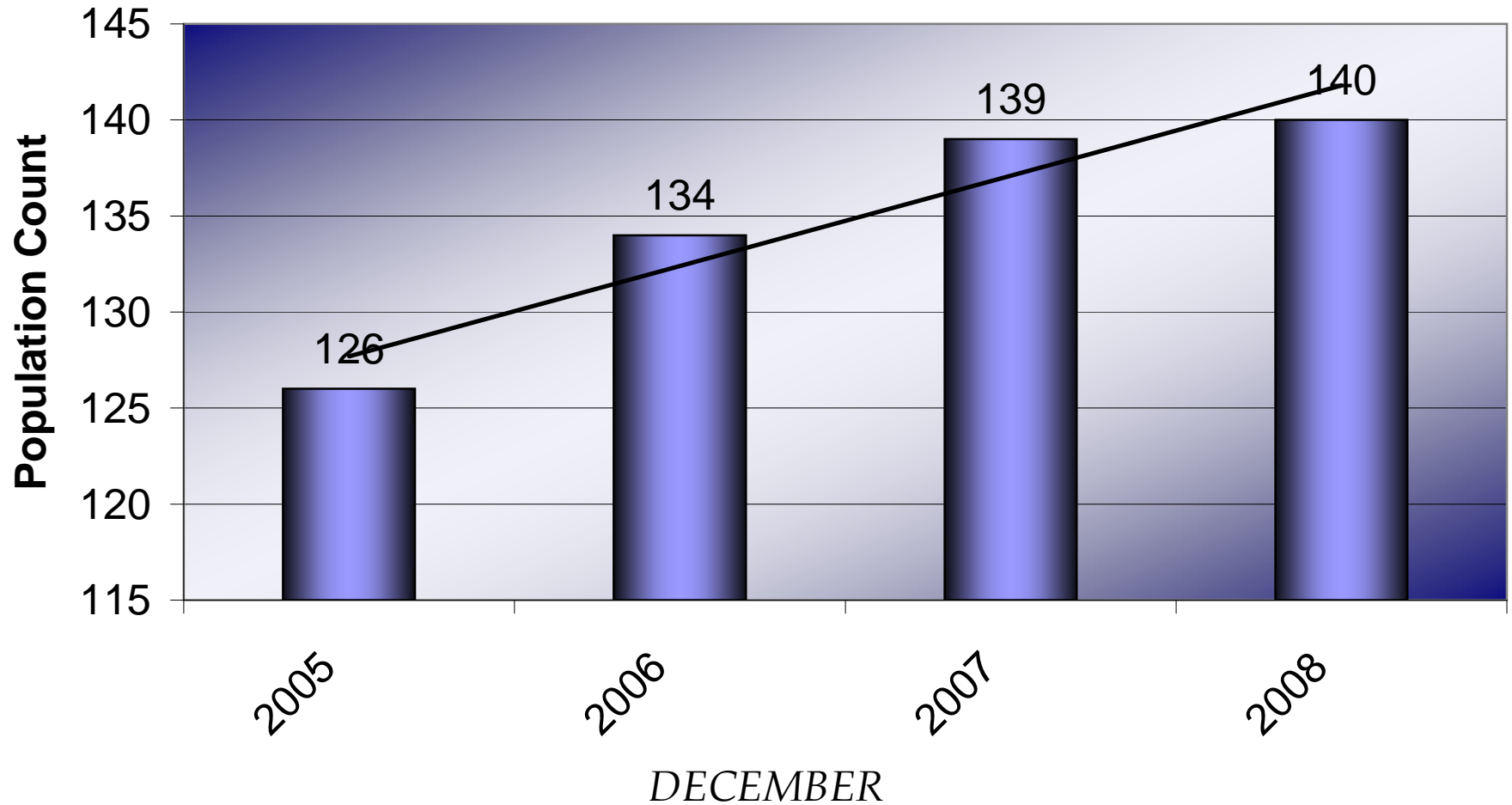
2008 Year-End Offender Data

Section One.....Parolee Populations in La Mesa (3 pages)

Section Two.....San Diego County Adult Probationers
Living in La Mesa (2 Pages)

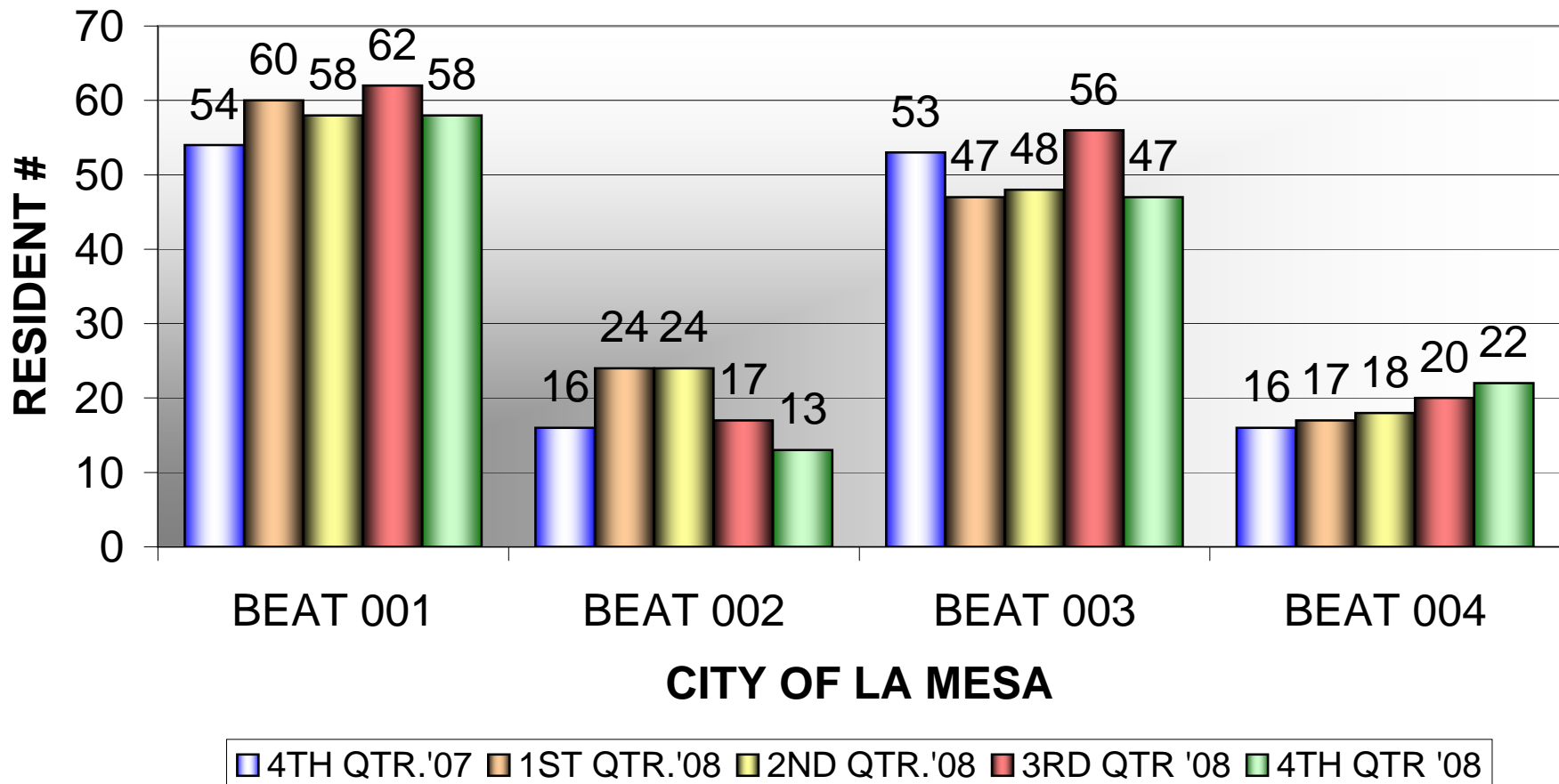
Offender Populations Fluctuations

4TH QTR. Parole Population Residing in La Mesa



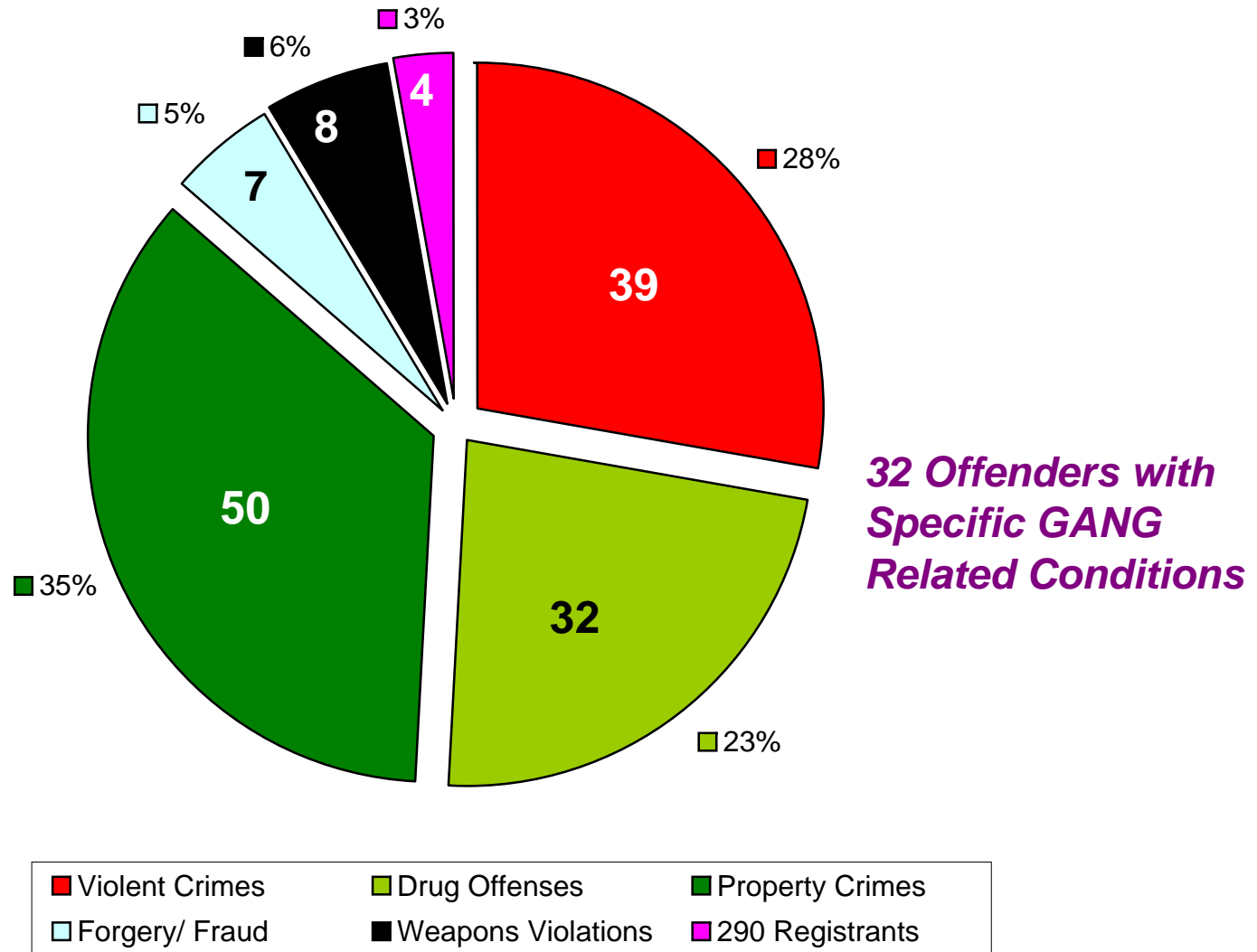
Resident Parolee Quarterly Report
4th Qtr. 2008

PAROLEE POPULATION CHANGES By Beat



DATA SOURCES: CALIF. DEPT. OF CORRECTIONS
 LEADS PROGRAM,
 FED. PROBATION, AND CAL YOUTH AUTHORITY

Parolees by Offense Type
 Primary Conviction Offenses for 140 Paroled
 Offenders Living in La Mesa



*Fourth Qtr. 2008 Adult Probationers
Living in the City of La Mesa*

Type of Charge / Aggregated Charge Types

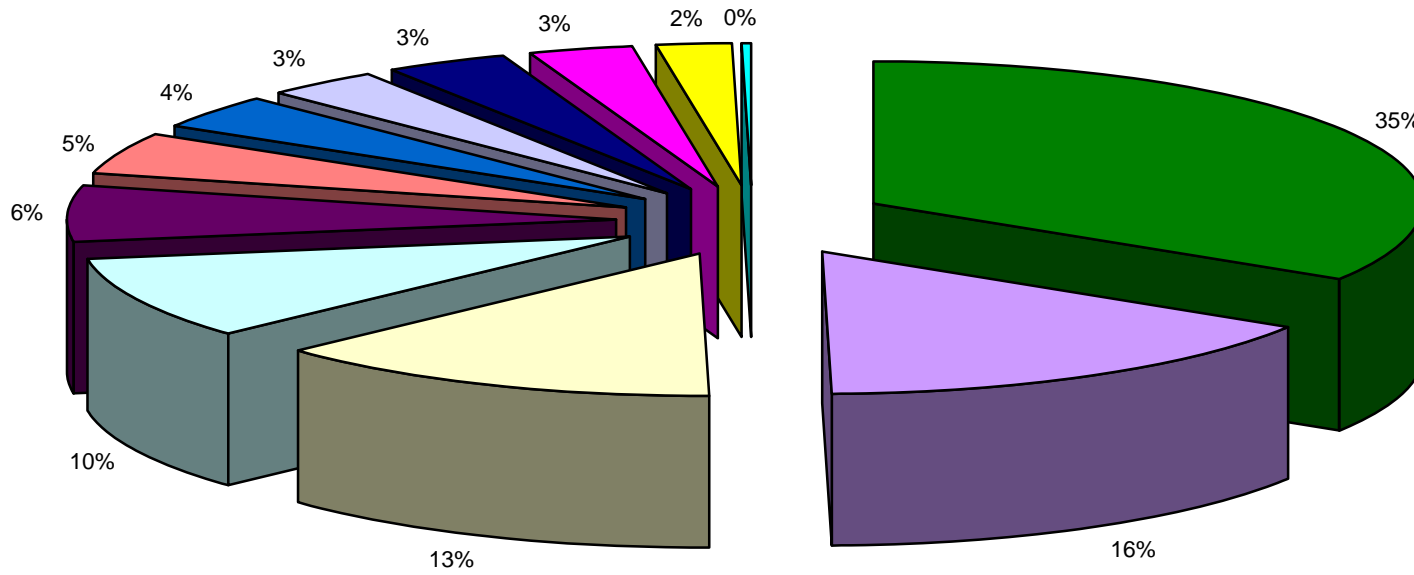
RANK	TOP TEN PROBATION CHARGES	COUNT
1	GRAND & PETTY THEFT	36
2	POSSESS CONTROLLED SUBSTANCE	35
3	BURGLARY/UNSPECIFIED	31
4	POSSESS NARCOTIC CONTROLLED SUBSTANCE	22
5	ASSAULT W/DEADLY WEAPON OTHER THAN FIREARM OR GBI FORCE	19
6	DUI ALCOHOL AND/OR DRUGS	13
7	INFLICT CORPORAL INJURY ON SPOUSE/COHABITANT	12
8	RECEIVE/ETC KNOWN STOLEN PROPERTY	11
9	ROBBERY	10
9	TAKE VEHICLE W/O OWNER'S CONSENT/VEHICLE THEFT	10
10	USE/UNDER INFLUENCE OF CONTROLLED SUBSTANCE	9

COUNT	PERCENT	CHARGE TYPE
109	35%	Drug Related
51	16%	Theft Related
42	13%	Assaultive Behavior
31	10%	Burglary
20	6%	Other Misc. Charge
15	5%	Sex Crimes
13	4%	DUI Related
11	3%	Forgery/Fraud
11	3%	Robbery Related
10	3%	Auto Theft
7	2%	Weapons Charge
1	0%	Elder Abuse
321	100%	Grand Total

258 La Mesa Adults on
County Probation for
321 Charges

52 with Multiple Grants of Probation

SD County Adult Probation Conviction Offenses by Type

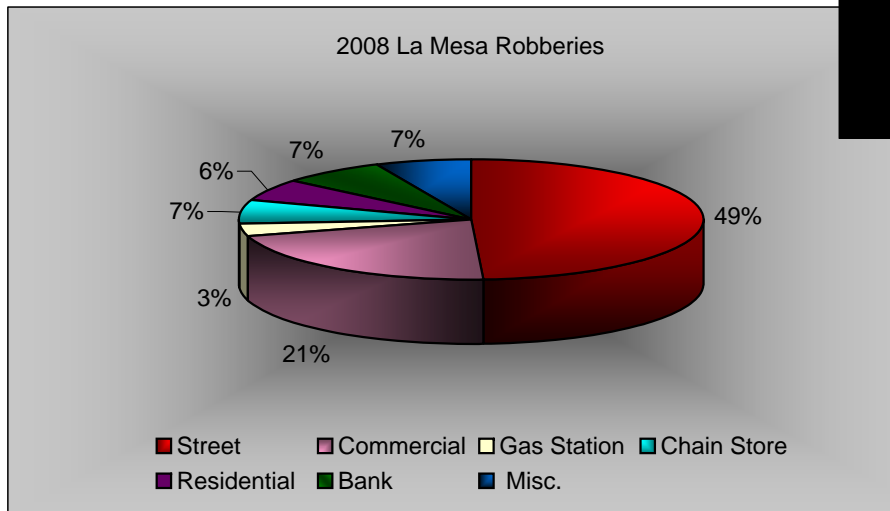
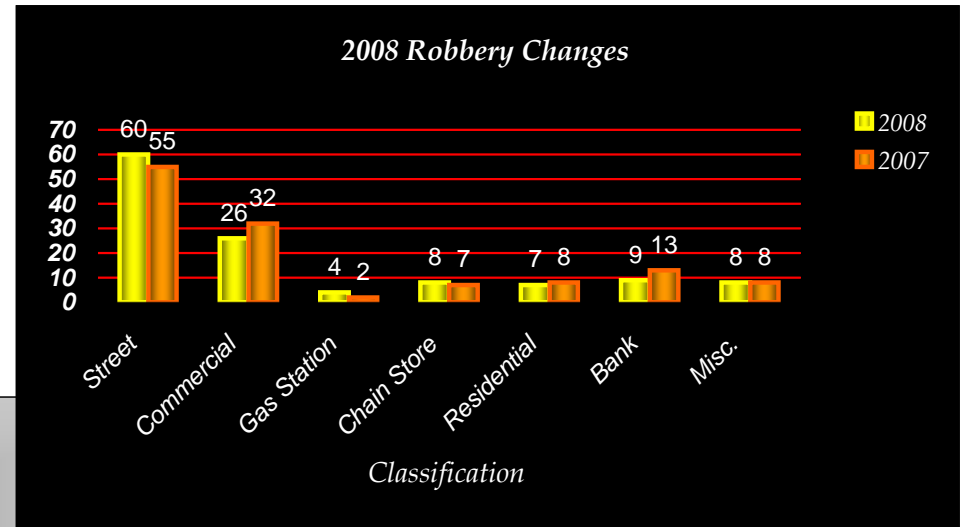


■ Drug Related	■ Theft Related	■ Assaultive Behavior	■ Burglary	■ Other Misc. Charge	■ Sex Crimes
■ DUI Related	■ Forgery/Fraud	■ Robbery Related	■ Auto Theft	■ Weapons Charge	■ Elder Abuse

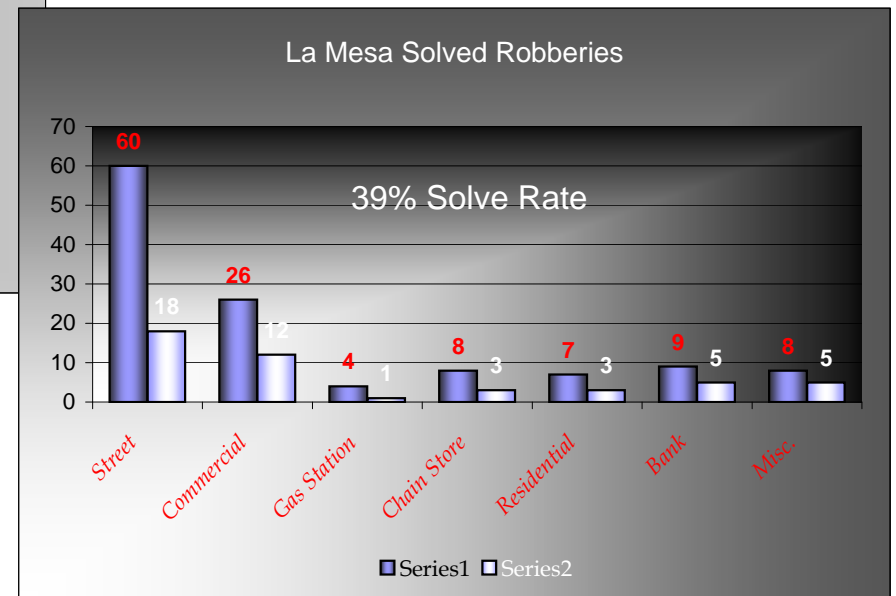
2008 Year-End Crime Focus Areas and Events

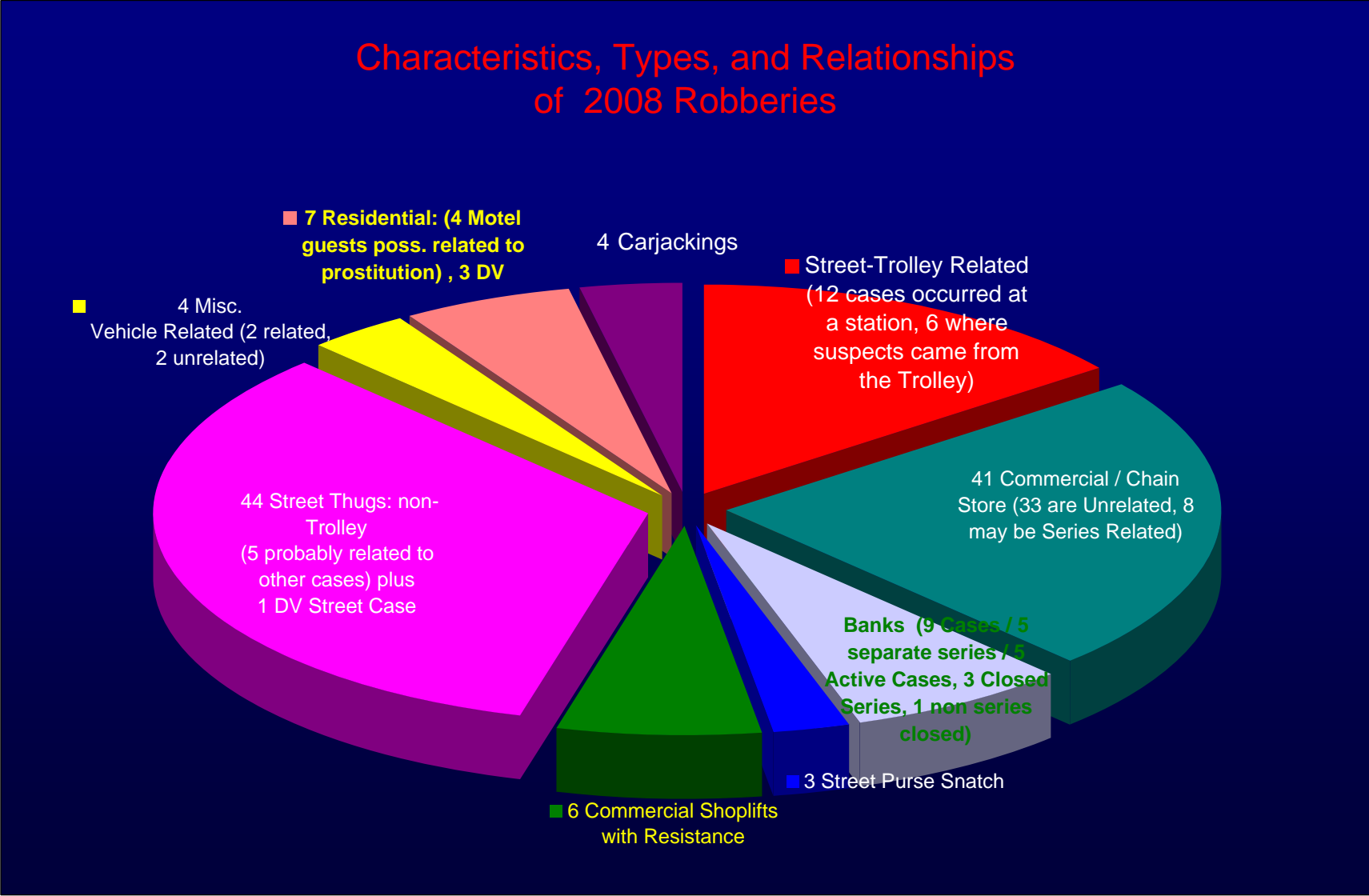
Section One.....	Robbery, UCR Part I Sub Categories (Page 1) Analysis by Pattern and Series (Page 2) 2008 Auto Theft Recap
Section Two.....	La Mesa Village Report (Part I Crimes) MTS Trolley Crime Report (Part I Crimes) Trolley Station Location Detail Grossmont Center Crime Report (Part I Crimes) Grossmont Hospital crime Report (Part I Crimes)

Reported Robberies	Annual Totals		Change
	2008	2007	
Street	60	55	9%
Commercial	26	32	-19%
Gas Station	4	2	100%
Chain Store	8	7	14%
Residential	7	8	-13%
Bank	9	13	-31%
Misc.	8	8	0%
TOTAL	122	125	-2%



Robbery Solved	2008		Solve Rate
	Reported	Solved	
Street	60	18	30%
Commercial	26	12	46%
Gas Station	4	1	25%
Chain Store	8	3	38%
Residential	7	3	43%
Bank	9	5	56%
Misc.	8	5	63%
TOTAL	122	47	39%





Series: A pattern of reported cases believed to be perpetrated by a known or an un-named individual or group of individuals acting in concert with each other.

La Mesa Village Crime Report Year End 2008

Part I Crimes		YTD Dec 2008	YTD Dec 2007	% Change
VIOLENT	Homicide	0	0	0%
	Rape	0	0	0%
	Robbery	2	9	-78%
	Aggravated Assault by Vic. Cnt	2	0	0%
PROPERTY	Res. Burglary	2	0	0%
	Comm. Burglary	5	8	-38%
	Burglary Total:	7	8	-13%
	Theft	32	30	7%
	Car Prowls (included in Thefts)	7	5	40%
	Theft Total:	39	35	11%
	Auto Theft	1	3	-67%
TOTAL VIOLENT:		4	9	-56%
TOTAL PROPERTY:		47	46	2%
FBI INDEX:		51	55	-7%

Address Ranges

8000-8499 La Mesa Bl
 4600-4699 Acacia
 4675-4701 Date
 4674-4695 Nebo
 4661-4711 Spring
 4600-4799 Palm
 4700-4799 3rd
 4700-4799 4th

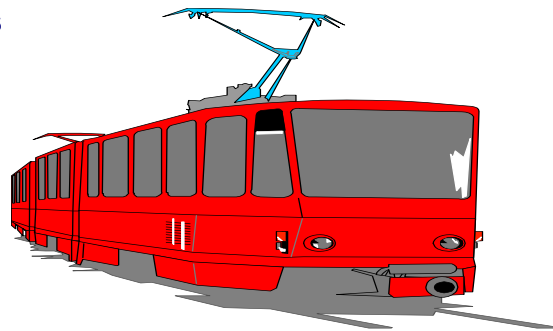


MTS Trolley Crime Report Year End 2008

Part I Crimes		YTD Dec. 2008	YTD Dec. 2007	% Change
VIOLENT	Homicide	0	0	0%
	Rape	0	0	0%
	Robbery	10	10	0%
	Aggravated Assault by Vic. Cnt	3	0	N/C
PROPERTY	Res. Burglary	N/A	N/A	N/A
	Comm. Burglary	0	0	0%
	Burglary Total:	0	0	0%
	Theft	9	8	13%
	Car Prowls (included in Theft Totals)	6	15	-60%
	Theft Total:	15	23	-35%
	Auto Theft	2	8	-75%
TOTAL VIOLENT:		13	10	30%
TOTAL PROPERTY:		17	31	-45%
FBI INDEX:		30	41	-27%

Location Addresses

7255 Alvarado Road
 9100 Amaya Ct
 8601 Fletcher Py
 8248 La Mesa Bl
 4250 Spring St.



N/C = Not Calculable

La Mesa Trolley Locations

Part I Crimes Reported to La Mesa Police

Year End 2008

2007

Station Name	Homicide	Rape	Robbery	Aggravated Assault	Burglary	Larceny/ Theft	Vehicle Theft	Arson	Total	Location Address	Larceny / Car Prowl
Alvarado Road	0	0	1	0	0	5	1	0	7	7255 Alvarado Road	5
Amaya Ct.	0	0	3	0	0	6	2	0	11	9100 Amaya Ct	5
Grossmont Center	0	0	1	0	0	5	1	0	7	8601 Fletcher Py	2
La Mesa Blvd	0	0	4	0	0	3	0	0	7	8248 La Mesa Bl	0
Spring St	0	0	1	0	0	4	4	0	9	4250 Spring St.	3
TOTAL	0	0	10	0	0	23	8	0	41		15

2008

Station Name	Homicide	Rape	Robbery	Aggravated Assault	Burglary	Larceny/ Theft	Vehicle Theft	Arson	Total	Location Address	Larceny / Car Prowl
Alvarado Road	0	0	0	1	0	2	0	0	3	7255 Alvarado Road	2
Amaya Ct.	0	0	5	0	0	5	0	0	10	9100 Amaya Ct	2
Grossmont Center	0	0	2	1	0	1	0	0	4	8601 Fletcher Py	0
La Mesa Blvd	0	0	2	0	0	1	0	0	3	8248 La Mesa Bl	0
Spring St	0	0	1	1	0	6	2	0	10	4250 Spring St.	2
TOTAL	0	0	10	3	0	15	2	0	30		6

Grossmont Center Crime Report Year End 2008

Part I Crimes		YTD Dec. 2008	YTD Dec. 2007	% Change
VIOLENT	Homicide	0	0	0%
	Rape	0	0	0%
	Robbery	17	16	6%
	Aggravated Assault by Vic. Cnt	1	2	-50%
PROPERTY	Res. Burglary (Not Applicable)	0	0	N/A
	Comm. Burglary	3	3	0%
	Burglary Total:	3	3	0%
	Theft	159	152	5%
	Car Prowls (included in Theft Totals)	50	51	-2%
	Theft Total:	209	203	3%
	Auto Theft	37	61	-39%
TOTAL VIOLENT:		18	18	0%
TOTAL PROPERTY:		249	267	-7%
FBI INDEX:		267	285	-6%

Address

5500 Grossmont Center Dr.

N/C = Not Calculable

N/A = Not Applicable

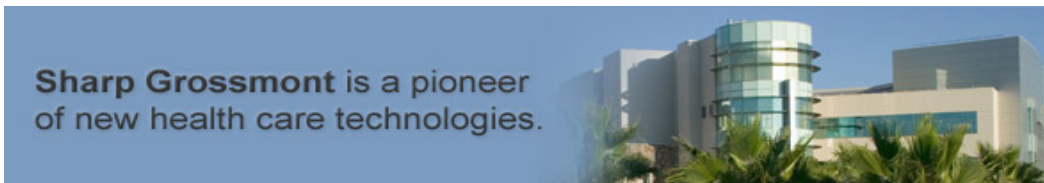


Grossmont Hospital Crime Report Year End 2008

Part I Crimes		YTD Dec. 2008	YTD Dec. 2007	% Change
VIOLENT	Homicide	0	0	0%
	Rape	0	0	0%
	Robbery	0	0	0%
	Aggravated Assault by Vic. Cnt	0	2	-100%
PROPERTY	Res. Burglary (Not Applicable)	0	0	N/A
	Comm. Burglary	0	1	-100%
	Burglary Total:	0	1	-100%
	Theft	8	8	0%
	Car Prowls (included in Theft Totals)	30	13	131%
	Theft Total:	38	21	81%
	Auto Theft	11	6	83%
TOTAL VIOLENT:		0	2	-100%
TOTAL PROPERTY:		49	28	75%
FBI INDEX:		49	30	63%

Address

5555 Grossmont Center Dr.



N/C = Not Calculable



DATE: January 7, 2009
TO: San Diego County Chief's and Sheriff's Association
FROM: Captain Ed Aceves
SUBJECT: Regional Robbery Advisory Group Update

Summary

In January 2008, the Seconds in Command group received direction from the Chief's and Sheriff's Association to put together a county wide effort to address the increase in robberies in San Diego County. I was selected by the Seconds group to chair this effort.

In February 2008, I worked with the members of the Seconds in Command group to identify key personnel in their agency to participate in this committee. It was requested that all the agencies select robbery supervisors or managers at their respected agencies to participate. By the end of February, all of the agencies provided information on their representatives, including several of the federal agencies.

In March 2008, we held the first meeting of the Regional Robbery Group at the Sheriff's Headquarters. There were over 50 representatives in attendance at the first meeting including all county police agencies, the DA's Officer, Probation Department, FBI, and the US Marshals.

At the first meeting I provided an overview to the group on the direction that I had received from the Chief's and Sheriff's Association and we discussed the potential goals for the group. We elected to distribute a survey to all the group members to prioritize the areas we felt were important in addressing the robbery problem. The group identified eight potential areas that we could explore to make an impact on the robberies. The eight areas identified were: Communication, Business Cooperation, Equipment Sharing, Grants and Funding, Proactive Enforcement, Patrol Officer Training, Case Assistance / Mutual Aid, Business Training.

It was agreed that the group would meet on a monthly basis until it was deemed unnecessary. It should be noted that at this first meeting, a flier was passed around on a bank robbery suspect wanted for a series of bank robberies in the East and South Counties. By the end of the meeting, the robber was identified and he was taken into custody several hours after the meeting. This obviously set a good tone for us to move forward with this group.

The robbery surveys were sent to the group in March 2008 asking each agency to prioritize what they felt would be important focus topic(s).

During the past 10 months, the Regional Robbery Advisory Group met seven times. During these meetings we developed and implemented a number of county wide initiatives. These initiatives were based on input received from the surveys that were completed. The following initiatives were instituted during the past 10 months:

- **Operation FALCON (Federal And Local Copes Organized Nationally):** One early area of discussion with the Robbery Advisory Committee was to have all of the agencies working collaboratively in a proactive regional effort. Representatives from the Fugitive Task Force were present at the early meetings and informed the group that there were over 200 outstanding robbery warrants in the system. Supervisor Deputy US Marshal Steve Jurman volunteered to put together a warrant sweep to address the overwhelming number of robbery warrants in the system. The members of the Robbery Advisory group worked together to identify staffing and logistics to assist with a week long warrant sweep. The week of June 2nd to June 6th, 2008 was dedicated to Operation FALCON, and over 100 law enforcement officers from all agencies participated. The operation was a huge success, resulting in over 150 felon arrested and over 250 warrants cleared. Approximately 30 of the warrant arrests were for robbery, but many felons were taken off of the street during the week.
- **Improved Communications:** The number one issue to be addressed by the Robbery Advisory group was improved communication among the robbery detectives and various police agencies. Currently the FBI hosts a monthly bank robbery meeting in the North and South regions. The members of the group felt that the monthly FBI meeting was useful and they wanted to keep intact, but it did not address the total robbery issue, since the main focus was on banks. The FBI agreed to include commercial and serial related robberies in their monthly meetings. At one of the early meetings in the year, Barbara Montgomery from ARJIS was invited to meet with us to see if ARJIS could offer any tools to assist the group. Through this contact with Barbara and ARJIS several important and effective communication tools were developed.
- **211 Alerts:** ARJIS developed new tool for this committee called 211 alerts. The 211 alert system was designed for robbery detectives to share information with all of the other agencies regarding robbery advisories, updates or information pertinent to robberies. A user of the system can subscribe to the service by going to the ARJISNET web page and signing up. Once a user has subscribed, they can send and/or receive robbery notices via email To: 211@arjis.net and sends the information to law enforcement officers who subscribe to the system (with attachments, if needed). Currently, there are 191 users signed up to receive 211 alerts. Several agencies from Orange and Riverside Counties have also subscribed to receive the 211 alerts. Since its inception it has become a popular tool among San Diego County detectives. Based on the success of the 211 alerts, ARJIS has developed alert systems for East County Investigators, PAL, Property Crimes, BOL's, and North County Crimes.
- **Regional Robbery Info (Arjisnet Portal Page):** An Arjisnet portal page has been set up specifically for robberies. If you visit Arjisnet.org, the robbery portal page is under heading "Agencies", and "Regional Robbery Info." This page contains a list of county robbery detectives and their contact information. This page also displays all of the robbery fliers broken down into robbery categories, along with robbery mapping information. The robbery page averages about 100 hits a month.

- **211 Supplemental Checklist:** A robbery checklist was developed by this group to address the issue of improved robbery investigations by the patrol officer. The concept of the checklist was to enhance the report narrative and serve as a reminder to officers on areas of their investigation that they need to expand upon in the narrative of their crime report. Most of the robbery detectives and supervisors felt that the officer on the scene of the robbery is the key to a thorough investigation. Many detectives shared their frustration that physical evidence is sometimes not collected, video was not captured, or a basic witness check was not conducted by the patrol officers. A subcommittee spent several months developing a checklist for patrol officers. In September 2008, a checklist was presented to the group for review and recommendations. It was agreed that 5 agencies would conduct field testing on the checklist for two months prior to a recommendation on county-wide use. The five agencies that participated in the field testing were La Mesa PD, National City PD, Oceanside PD, SDSO/Vista, and SDSO/Encinitas. After the two months of field testing there was positive feedback from the agencies that participated. The supervisors felt that the form had a direct impact on increasing the thoroughness of the initial on-scene robbery investigation.

The entire group then discussed what recommendation would be made to the Chief's and Sheriff's Association members regarding this form. We recognized that ultimately, each agency would decide for itself whether or not to utilize the checklist form. It was clear from some feedback we received that some agencies were reluctant to change establishment procedures, just as was found with some of the recommendations that came from the Second in Command's work on auto theft. I discussed this issue with Chief Lanning. He expressed the hope that given the positive results from the agencies who field-tested the form, and our mutual interests in the quality of information each of us contributes to regional databases, that each agency would at the minimum use the form for a trial period of time, either department-wide or in some smaller group within the department.

- **Future Projects:** At our December meeting the Regional Robbery group decided that it would be beneficial to meet once a quarter. At these quarterly meetings we will evaluate how the current initiatives are working and consider starting some new projects county wide. One area of interest is training and cooperation by business owners, and this will be explored in the future.

CONCLUSION

It has been my pleasure to work with the robbery supervisors and managers in this project during the past year. These dedicated men and women have worked diligently to develop meaningful and effective ideas to address the robbery problem in the County. Robberies were down county-wide in 2008 compared to 2007. I asked the group members if they felt they had a direct impact on the robbery rate reduction. Most agreed that we will never know for certain, but felt that the increased communication among all of the agencies has definitely had a positive impact. Most of the group members feel strongly that the 211 Alert System and the Arjisnet Portal page will continue to assist greatly in keeping the communication flowing between agencies in the future.

**City of La Mesa
Performance Measure Report
Police Department**

January – December 2008

Police Division: Services

Performance Measure: “Tracking of Graffiti Incidents and Response”

Purpose of Measure: The presence of graffiti in the community can have a significant effect on resident and visitor perceptions about the level of crime in the community and the relative safety of different areas within the community. The frequency of graffiti incidents and the timeliness of the Police Department’s response to those incidents were identified as key measures for the Department’s Community Resource Unit to coordinate and report on.

Top Five Locations (January - June)

Locations	Number of Incidents
Palm Avenue: Fresno to LMB	11
LM Springs & Trolley	9
North of ECB: 7300-7600	7
Palm Avenue (south of Fresno) & Collier Park	6
Parks Avenue 4200-4400	6

Top Five Locations (July - December)

Locations	Number of Incidents
Jackson underpass	6
Coleman College	5
Bancroft	5
High St. at Costa Bella	4
Harry Griffin Park at Poppy	3

Total Number of Incidents (Jan – Dec)

2008	Tagger	Gang	Hate	Other	Month Total
January	17	0	0	4	21
February	10	1	0	9	20
March	10	1	0	5	16
April	25	1	0	1	27
May	27	0	1	2	30
June	17	0	1	2	20
July	12	4	0	0	16
August	19	0	0	0	19
September	12	2	0	0	14
October	9	4	0	0	13
November	14	0	1	1	16
December	13	2	1	0	16
Totals	185	15	4	24	228
	81.1%	6.5%	1.7%	10.5%	

Data Analysis: Graffiti reports are obtained through the CAD system, the graffiti hotline, and the Paint-Out-Posse. Many of the hotline calls come from certain citizens in particular who are especially vigilant in their areas. Calls from these people account for the locations indicated being the top 5 locations.

Action To Be Taken: This information is shared with patrol and SED officers, as well as RSVPs, for consideration in their preventive patrol activities. Data collection will continue for the January-June 2009 time period. Committee Members will meet on a monthly basis to review data and provide analysis for the next bi-annual or annual review. This information will be passed to the Patrol and RSVP units.

Next Review Date: July 10, 2009

**City of La Mesa
Performance Measure Report
Police Department**

Jan – Dec 2008

Division: Patrol Division

Performance Measure: “Directed vs. Non-directed Patrol Time”

Purpose of the Measure: To determine the amount of “directed” time during a patrol shift that an officer is required to handle radio calls and administrative duties. Also, to determine the amount of “non-directed” time that an officer has available to work on proactive activities, to include community projects, proactive enforcement, and traffic enforcement. The goal of this committee is to attempt to identify 30% - 40% of an officer’s total work day as non-directed time.

Graphed Data: See attached graphs.

Data Analysis: The first attached graph depicts compared results for 2008 by month, against the previous year for directed vs. non-directed patrol time. Over the past five years, the percentage of non-directed time remained fairly static and within the target range. For 2008, officers were averaging 34.5% of their patrol time as non-directed time. This is still within target range but it’s a 7% decrease over the annual average for 2007. There is a corresponding 42% decrease in annual Community Project time.

A two year comparison of hours devoted to proactive community projects is depicted in the second graph. During 2008, the amount of time dedicated to community projects compared to the same period in 2007 decreased 42%, from 53.1 hours accrued in 2007, to 30.1 hours accrued in 2008. This decrease is due in large part to the implementation of the Special Enforcement Detail, where strategic operations are addressed separately from regular patrol time. Thus, the number of hours dedicated to community projects by the regular force has dramatically decreased.

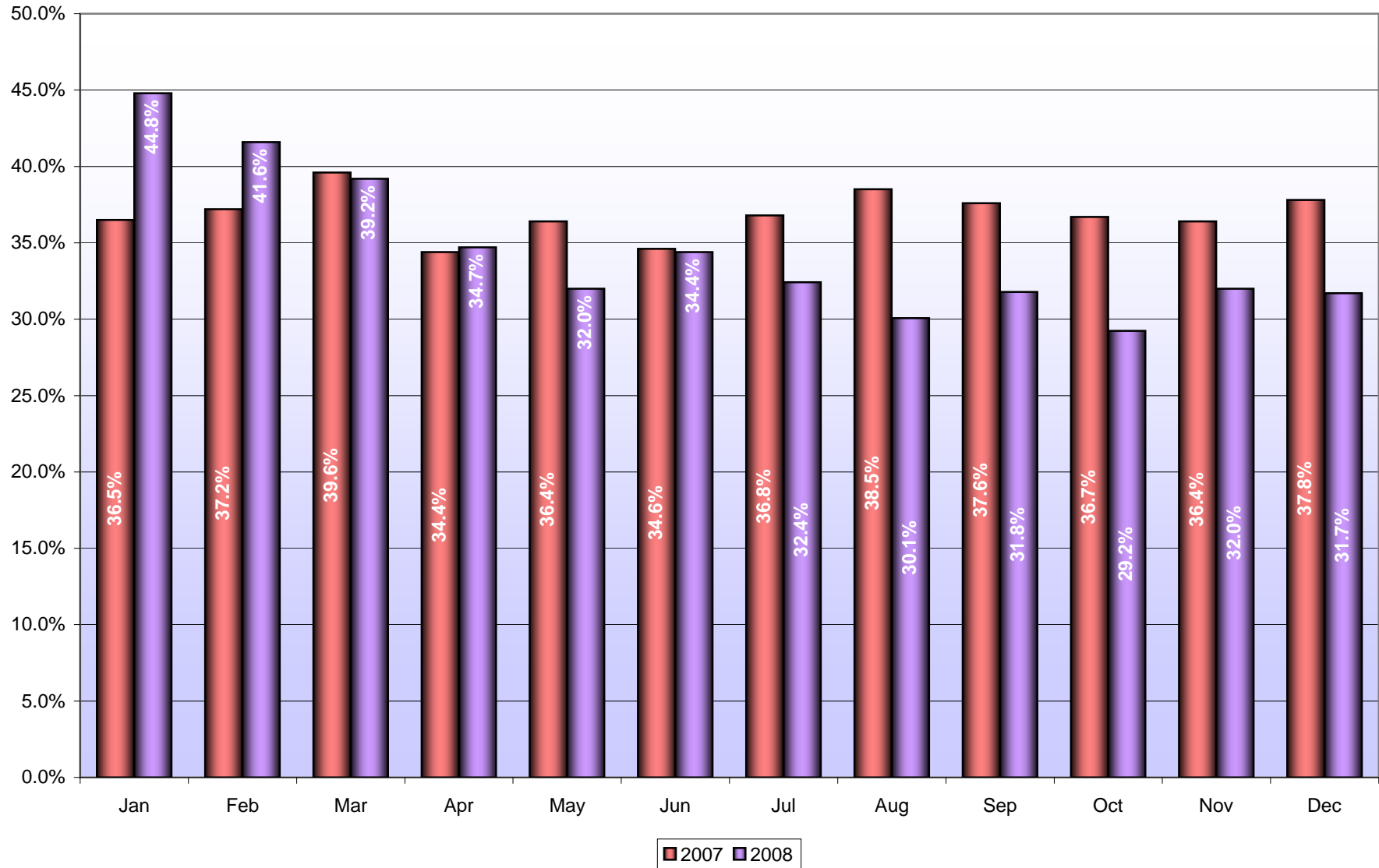
In April, staff recommended that the Department return to the definitions of “Out of Service” time (Directed Patrol Time) that had been in force prior to the inception of these performance measures. In 2003, the Department had adopted a modified version of the Out of Service definitions after a six month test period which ended 05/31/03. This return to the pre-existing method of calculating directed time would have the anticipated effect of returning us to the historic levels of 23%-25% of non-directed or available pro-active time. Accordingly, for May and June of 2008, the per cent of directed time should have dipped to approximately 25%. But they didn’t. The main difference between those adopted for performance measures and those that pre-existed (and have again

become the business practice) are found in computing the administrative tasks, paperwork, transports and evidence processing associated with officer initiated activity. If the initiated activity was the result of actions taken during non-directed time, the time spent was logged but not computed as "out of service time". Now they will be considered as "out of service"/directed time. Despite the change, Officers have been able to maintain the target levels of these performance measures.

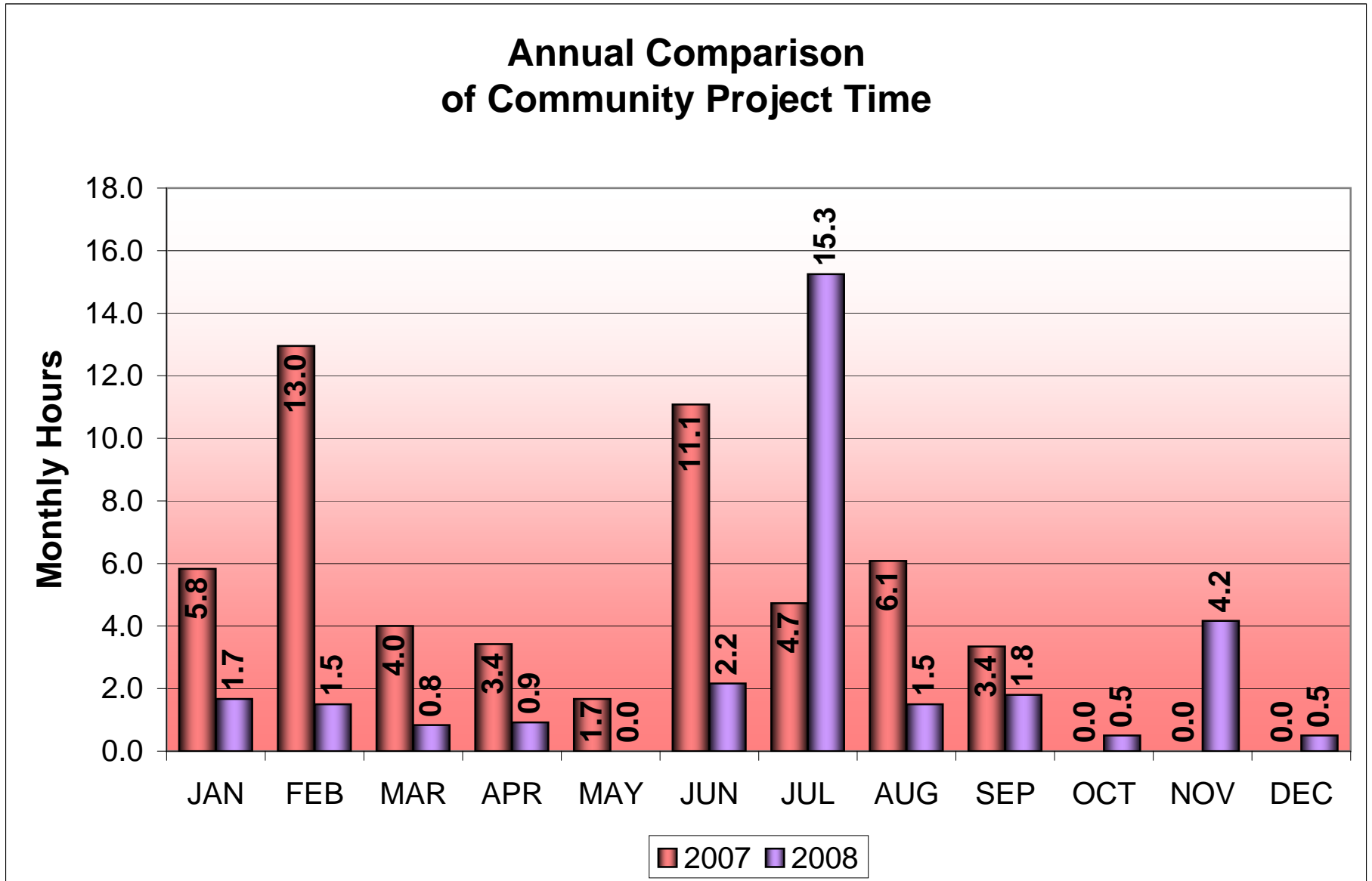
Action To Be Taken: Officers should continue to document their activity within the current recommended guidelines. Squad sergeants should review those guidelines with their squads periodically and make a concerted effort to check their recapped activity for Problem Oriented Policing minutes. Non-directed patrol time will continue to be reported to staff and supervisors on a monthly basis in the "Monthly Part I Crimes and Patrol Statistics" report compiled by Crime Analysis.

Next Review Date: July 10, 2009

Annual Comparison of Non-Directed Patrol Time 2007 VS. 2008



*Monthly Hours of
Non-Directed Time Spent on Proactive Community Projects*



**City of La Mesa
Performance Measures Review
Police Department**

January-December 2008

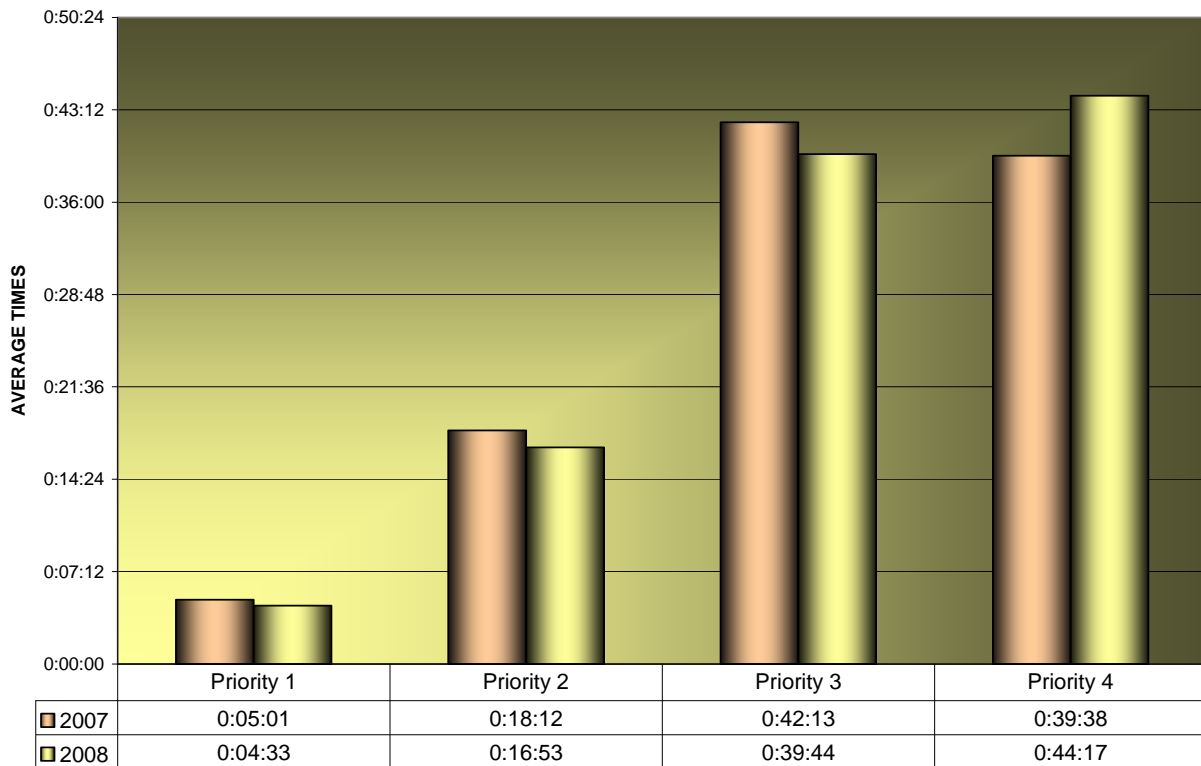
Division: Services

Performance Measure: Response Times by Priority

Purpose of the Measure: To measure the average amount of time between when a call is received to the time an officer arrives on the scene.

Graphed Data:

Total Average Response Times



2007 vs 2008 ANNUAL AVERAGES

Data Analysis:

Total average response times for 2008 showed the following changes over 2007:

Response times to Priority 1 calls declined 9% by 27 seconds. This may be due to the availability of more new officers graduating from field training. Response times to

Priority 2 calls also declined by 1 minute, 19 seconds, and Priority 3 calls declined by 2 minutes, 29 seconds. Response times to Priority 4 calls however, rose by 4 minutes, 39 seconds.

The volume of dispatched calls increased 3% in 2008. 40,777 calls were dispatched versus 39,555 calls in 2007.

Next Review Date: July 10, 2009

**City of La Mesa
Performance Measure Report
Police Department**

January – December 2008

Police Division: Services

Performance Measure: “Delivery of Crime Prevention Services”

Purpose of Measure:

The Mission Statement of the La Mesa Police Department includes “the prevention of crime” as one of its objectives. The prevention of criminal acts can be accomplished through a variety of means, including the providing of timely information to the public on how they can minimize their risk of being a crime victim.

The La Mesa Police Department first organized a Crime Prevention Unit in the late 1970's, with a primary emphasis on preventing residential burglaries. Since that time the responsibilities of the unit have increased significantly but the underlying theme of the entire unit's programs is that of crime prevention. Given this essential function, the Services Division's staff sought to develop a performance measure that would reflect the source and number of crime prevention presentations made on a monthly basis. From this data, staff will be able to provide analysis indicating the relative demand for these services, sources within the department or community that can be used to enhance the delivery of these services, and provide policy makers with information demonstrating how changing workloads and staffing levels impact delivery of services.

Graphed Data: Data collection began in July 2002. See attached.

Data Analysis: 2008, compared with 2007, showed an emphasis on revitalizing the Neighborhood Watch Program, presentations to community and city employee groups. Commercial Security Inspections were accordingly lower and the Residential Security Inspections remained about the same.

Neighborhood Watch Meetings

Comparing this same period last year, Neighborhood Watch meetings almost doubled from 12 in 2007 to 23 in 2008.

Residential Security Inspections

Residential Security Inspections (RSI) remained the same at 5 for 2007 and 2008.

Commercial Security Inspections

Half as many (8 in 2008 versus 16 in 2007) Commercial Security Inspections (CSI) were conducted.

Presentations

The Department's long standing practice has been to take every opportunity that comes along to try to facilitate as many Special Presentations as possible. There were more than double as many presentations with 118 in 2008 compared to 54 in 2007.

Complexes in Crime Free Multi/Mobile Housing Program

The number of complexes participating in our version of the Crime Free Multi/Mobile Housing Program increased in December with the addition of seven complexes on Baltimore Drive that share the same manager. There are now 35 complexes in the program in 2008 compared to 28 in 2007. Currently we are meeting the demand for this program in so far as we attend to requests and help complexes meet the program requirements.

Action To Be Taken:

The Committee will continue to monitor the above listed performance areas.

Next Review Date: July 10, 2009

Attachments:

- Special Presentations Chart
- Crime Prev. Performance Measures Matrix 2008-2009
- Crime Prev. Performance Measures Matrix 2007-2008
- Crime Prev. Performance Measures Matrix 2006-2007
- Crime Prev. Performance Measures Matrix 2005-2006
- Crime Prev. Performance Measures Matrix 2004-2005
- Crime Prev. Performance Measures Matrix 2003-2004
- Crime Prev. Performance Measures Matrix 2002-2003
- Crime Prev. Performance Measures Summary Chart 2008
- Crime Prev. Neighborhood Watch Meetings Chart 2008
- Crime Prev. Commercial Security Inspections Chart 2008
- Crime Prev. Residential Security Inspections Chart 2008
- Crime Prev. Special Miscellaneous Presentations Chart 2008

2008 January - March Special Presentations

January		
School Safety	Lemon Avenue School	SRO Hinton
Juvenile Law Class	LMPD Juvenile Diversion	Kingkade & SRO Hinton
Rosebud Managers	LMPD	Gleason
February		
Juvenile Law Class	LMPD Juvenile Diversion	Kingkade & Hinton
Good Citizenship	Lemon Avenue School	SRO Hinton
Safety Presentation	Lemon Avenue School	SRO Hinton
Following Directions	Maryland Avenue School	SRO Hinton
Senior Security	Community Center Expo	CPS Lindquist
Rosebud Managers	LMPD	Gleason
Gangs, Shootings, Arrest	Helix High Security	SRO McNamara
Cell Phone Searches	Helix High Administration	SRO McNamara
March		
Juvenile Law Class	LMPD Juvenile Diversion	Kingkade & Hinton
Bullying	Maryland Avenue Schools	SRO Hinton
Classroom Reading	Rolando Elementary	SRO Hinton
Lockdown Exercise	Vista La Mesa School	SRO Hinton
Alcohol/Drug Abuse	Maryland Avenue School	SRO Hinton
Girl Scouts Station Tour	La Mesa PD	CPS Lindquist
Identity Theft	Sharp HealthCare	CPS Lindquist
Rosebud Managers	LMPD	Gleason

2008 April - June Special Presentations

April		
Rosebud Managers	LMPD	Gleason
DETAC-High Risk Stops	LMPD	SRO Hinton
Juvenile Law Class	LMPD Juvenile Diversion	Kingkade & SRO Hinton
Crime Prevention	Rotary Club	CPS Lindquist
Personal Safety	Pegasus Recovery Center	CPS Lindquist
Crime Prevention (x8)	City Staff	CPS Lindquist
May		
Rosebud Managers	LMPD	Gleason
DETAC-MFF	LMPD	SRO Hinton
Juvenile Law Class	LMPD Juvenile Diversion	Kingkade & SRO Hinton
Citizenship	Rolando Elementary School	SRO Hinton
Integrity (x2)	Lemon Avenue School	SRO Hinton
Crime Prevention	Community Services	CPS Lindquist
Citizens Academy	LMPD	CPS Lindquist
Taser/Electricity (x3)	Helix High	SRO McNamara
June		
Rosebud Managers	LMPD	Gleason
DETAC-Scenarios	LMPD	SRO Hinton
Career Day	Bancroft School	SRO Hinton
Citizenship (x2)	Rolando Elementary School	SRO Hinton
Citizens Academy (x4)	LMPD	CPS Lindquist

2008 July - September Special Presentations

July		
Citizens Academy	City Hall	CPS Lindquist
Catalytic Converter Event	Public Works	CPS Lindquist
Safety Presentation	Smart Scrubs Store	CPS Lindquist
Daisy Troop Tour	LMPD	CPS Lindquist
CRU "Open Projects" Meeting	ECB / Baltimore	SRO Hinton
Juvenile Law Class	LMPD Juvenile Diversion	Kingkade & SRO Hinton
Critical Incident Training	DEA	SRO Hinton
Hot Pursuit Training	LMPD	SRO Hinton
Skateboard Project	Highwood Park	SRO Hinton
Rosebud Managers	LMPD	Gleason
August		
National Night Out	Grossmont Center	CPS Lindquist
Juvenile Law Class	LMPD Juvenile Diversion	Kingkade & SRO Hinton
Bullying Presentation	Murray Manor Elem. School	SRO Hinton
Skateboard Project	Highwood Park	SRO Hinton
Use of Force Training x4	LMPD	SRO Hinton
Principal/Parent/Student Conference	Murray Manor Elementary School	SRO Hinton
Cell Phone Searches	Helix High Administration	SRO McNamara
September		
I.D. Theft Presentation	Joan Croc Center	CPS Lindquist
Kids Care Fest	Briercrest Park	CPS Lindquist
I.D. Theft Presentation	Christ Lutheran Church	CPS Lindquist
Juvenile Law Class	LMPD Juvenile Diversion	Kingkade & Hinton
Safe School-Safe Kids Presentation	Entire Dist. @ La Mesa Middle School	SRO Hinton
ABC Detail	City of La Mesa	SRO Hinton
Principal/Parent/Student Conference	Rolando Elementary School	SRO Hinton
Megan's Law Meeting	Rolando Elementary School	SRO Hinton
Principal/Parent Conference	La Mesa Middle School	SRO Hinton
Rosebud Managers	LMPD	Gleason

2008 October - December Special Presentations

October		
Oktoberfest Booth (x3)	La Mesa Village	CPS Lindquist
Drug Presentation	Christ Lutheran School	CPS Lindquist
Drug Presentation(x6) for Red Ribbon Week	Each Elementary School	SRO Hinton
Juvenile Law Class	LMPD Juvenile Diversion	Kingkade & SRO Hinton
November		
La Mesa Middle Tour (x3)	LMPD	CPS Lindquist
Police Car Presentation	Young Imaginations School	CPS Lindquist
Home School Tour	LMPD	CPS Lindquist
La Mesa Dale Tour (x3)	LMPD	CPS Lindquist
I.D. Theft Presentation	Lions Club	CPS Lindquist
Cub Scout Tour	LMPD	CPS Lindquist
Project Alert Training	La Mesa/Spring Valley School District Office	SRO Hinton
Juvenile Law Class	LMPD Juvenile Diversion	Kingkade & SRO Hinton
Charger Junior Training Camp	Parkway Middle School	SRO Hinton
Principal/Parent Conference	Maryland Avenue Elementary School	SRO Hinton
Traffic Issue Meeting	La Mesa/Spring Valley School District Office	SRO Hinton
Taser/Electricity (x3)	Helix High	SRO McNamara
December		
Mt. Helix Academy Tour (x2)	LMPD	CPS Lindquist
Threats of Violence Training	Grossmont Unified School District	SRO Hinton
Juvenile Law Class	LMPD Juvenile Diversion	Kingkade & SRO Hinton
School Lockdown Drill	Parkway Middle School	SRO Hinton
Counselor/Student Conference	Parkway Middle School	SRO Hinton
Teacher/Student Conf.	Maryland Elementary School	SRO Hinton
Conducted Real Sch. Lockdown Procedures	La Mesa Dale Elementary School	SRO Hinton
Conducted Real Sch. Lockdown Procedures	La Mesa Middle School	SRO Hinton
Rosebud Managers	LMPD	Gleason

CRIME PREVENTION PERFORMANCE MEASURES FY 2008-2009

	July	Aug.	Sept.	Oct.	Nov.	Dec.	Jan.	Feb.	Mar.	Apr.	May	Jun.
Neighborhood Watch Meetings	5	4	0	1	2	2						
Residential Security Inspections	0	0	1	0	0	0						
Commercial Security Inspections	2	0	0	0	2	0						
Special Miscellaneous Presentations*	10	10	10	11	18	10						
Complexes in Crime Free Multi/Mobile Housing Program	28	28	28	28	28	35						

	Q-1/Summer	Q-2/Fall	Q-3/Winter	Q-4/Spring	Total
Neighborhood Watch Meetings	9	5			
Residential Security Inspections	1	0			
Commercial Security Inspections	2	2			
Special Miscellaneous Presentations*	30	39			
Complexes in Crime Free Multi/Mobile Housing Program	28	35			

CRIME PREVENTION PERFORMANCE MEASURES FY 2007-2008

	July	Aug.	Sept.	Oct.	Nov.	Dec.	Jan.	Feb.	Mar.	Apr.	May	June
Neighborhood Watch Meetings	1	4	1	0	0	3	2	0	1	2	1	3
Residential Security Inspections	0	0	0	0	0	0	0	4	0	0	0	0
Commercial Security Inspections	0	4	2	1	1	0	0	1	0	0	1	2
Special Miscellaneous Presentations*	5	6	4	4	7	1	3	8	8	13	8	9
Complexes in Crime Free Multi/Mobile Housing Program	28	28	28	28	28	28	28	28	28	28	28	28

	Q-1/Summer	Q-2/Fall	Q-3/Winter	Q-4/Spring	Total
Neighborhood Watch Meetings	6	3	3	6	18
Residential Security Inspections	0	0	4	0	4
Commercial Security Inspections	6	2	1	3	12
Special Miscellaneous Presentations*	15	12	19	30	76
Complexes in Crime Free Multi/Mobile Housing Program	28	28	28	28	28

CRIME PREVENTION PERFORMANCE MEASURES FY 2006-2007

	July	Aug.	Sept.	Oct.	Nov.	Dec.	Jan.	Feb.	Mar.	Apr.	May	June
Neighborhood Watch Meetings	1	3	3	4	1	0	0	0	1	1	1	0
Residential Security Inspections	1	0	1	0	1	0	2	0	0	0	0	3
Commercial Security Inspections	1	3	0	2	6	0	0	0	0	1	4	3
Special Miscellaneous Presentations*	9	12	2	7	10	3	1	4	6	5	8	3
Complexes in Crime Free Multi/Mobile Housing Program	28	28	28	28	28	28	28	28	28	28	28	28

	Q-1/Summer	Q-2/Fall	Q-3/Winter	Q-4/Spring	Total
Neighborhood Watch Meetings	7	5	1	2	15
Residential Security Inspections	2	1	2	3	8
Commercial Security Inspections	4	8	0	8	20
Special Miscellaneous Presentations*	23	20	11	16	70
Complexes in Crime Free Multi/Mobile Housing Program	28	28	28	28	28

CRIME PREVENTION PERFORMANCE MEASURES 2005-2006

	July	Aug.	Sept.	Oct.	Nov.	Dec.	Jan.	Feb.	Mar.	Apr.	May	June
Neighborhood Watch Meetings	2	1	1	2	2	1	0	0	2	2	1	1
Residential Security Inspections	1	0	0	2	1	1	0	2	5	0	1	3
Commercial Security Inspections	1	1	1	1	2	2	0	2	2	1	1	1
Special Miscellaneous Presentations*	4	4	3	5	6	13	8	9	11	11	7	5
Complexes in Crime Free Multi/Mobile Housing Program	28	28	28	28	28	28	28	28	28	28	28	28

	Q-1/Summer	Q-2/Fall	Q-3/Winter	Q-4/Spring	Total
Neighborhood Watch Meetings	4	5	2	4	15
Residential Security Inspections	1	4	7	4	16
Commercial Security Inspections	3	5	4	3	15
Special Miscellaneous Presentations*	11	24	28	23	86
Complexes in Crime Free Multi/Mobile Housing Program	28	28	28	28	28

CRIME PREVENTION PERFORMANCE MEASURES 2004-2005

	July	Aug.	Sept.	Oct.	Nov.	Dec.	Jan.	Feb.	Mar.	Apr.	May	June
Neighborhood Watch Meetings	0	12	2	0	0	0	1	0	0	1	2	3
Residential Security Inspections	0	0	0	0	0	0	1	0	0	0	1	0
Commercial Security Inspections	0	1	1	0	0	0	1	1	1	0	0	0
Special Miscellaneous Presentations*	14	7	12	12	5	1	0	0	2	0	4	3
Complexes in Crime Free Multi/Mobile Housing Program	28	28	28	28	28	28	28	28	28	28	28	28

	Q-1/Summer	Q-2/Fall	Q-3/Winter	Q-4/Spring	Total
Neighborhood Watch Meetings	14	0	1	6	21
Residential Security Inspections	0	0	1	1	2
Commercial Security Inspections	2	0	3	0	5
Special Miscellaneous Presentations*	33	18	2	7	60
Complexes in Crime Free Multi/Mobile Housing Program	28	28	28	28	28

CRIME PREVENTION PERFORMANCE MEASURES 2003-2004

	July	Aug.	Sept.	Oct.	Nov.	Dec.	Jan.	Feb.	Mar.	Apr.	May	June
Neighborhood Watch Meetings	1/0	4/1	3/0	3/0	5/0	3/0	1/0	5/3	2	0	0	2
Residential Security Inspections	2/0	1/0	0/0	0/0	0/0	1/0	2/0	1/0	2	2	2	1
Commercial Security Inspections	0/0	1/0	1/0	0/0	0/0	0/0	5/0	0/0	1	0	1	0
Special Miscellaneous Presentations*	5/0	2/0	8/0	8/0	7/0	5/7	6/0	10/2	8	2	12	7
Complexes in Crime Free Multi/Mobile Housing Program	22	22	23	23.	23	23	23	23	23	23	23	28

	Q-1/Summer	Q-2/Fall	Q-3/Winter	Q-4/Spring	Total
Neighborhood Watch Meetings	9	11	11	2	33
Residential Security Inspections	3	1	5	5	14
Commercial Security Inspections	2	0	6	1	9
Special Miscellaneous Presentations*	15	27	26	21	89
Complexes in Crime Free Multi/Mobile Housing Program	23	23	23	28	28

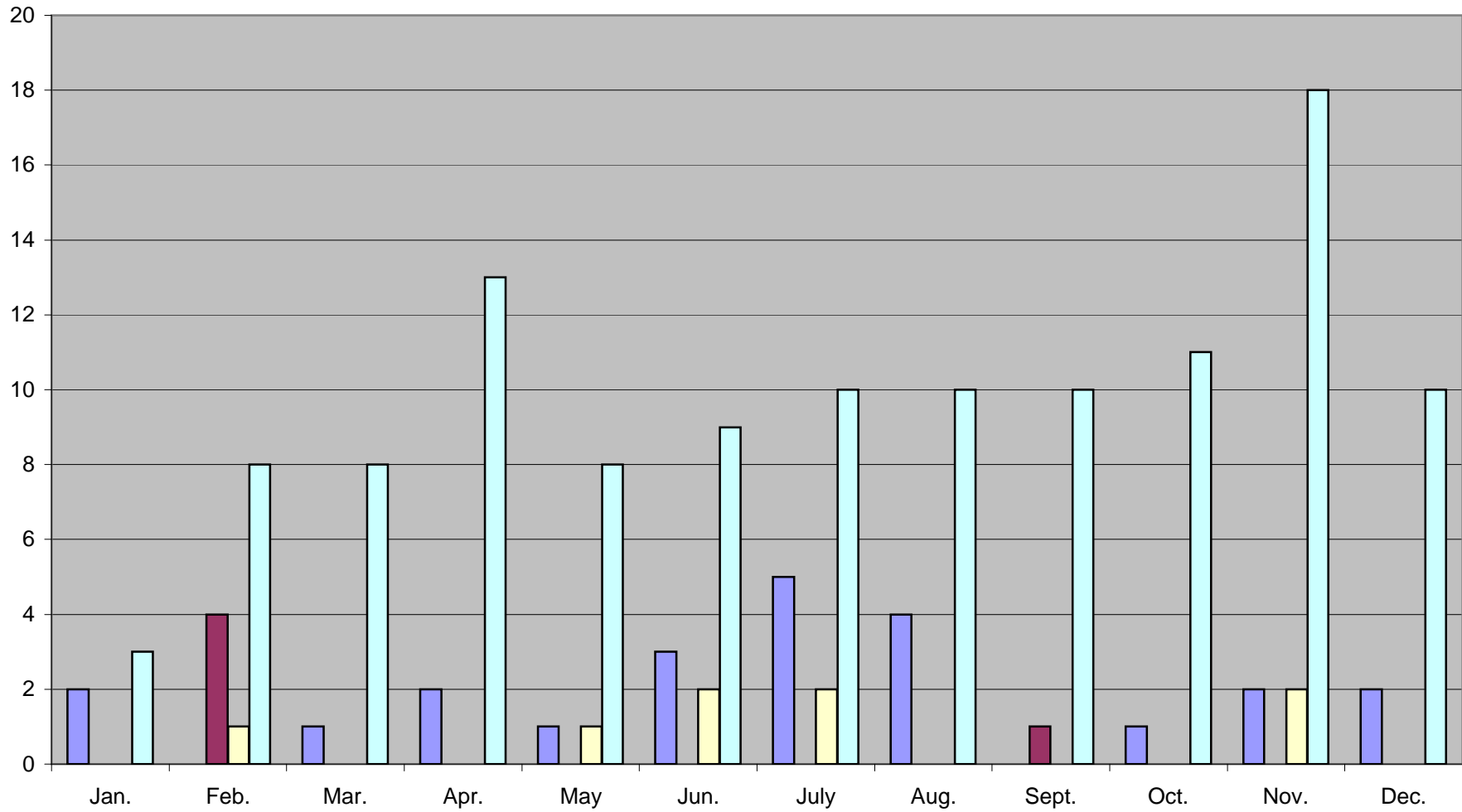
CRIME PREVENTION PERFORMANCE MEASURES 2002-2003

	July	Aug.	Sept.	Oct.	Nov.	Dec.	Jan.	Feb.	Mar.	Apr.	May	June
Neighborhood Watch Meetings	1/0	3/0	3/0	5/0	3/0	0/0	1/0	1/0	4/0	1/0	3/0	1/0
Residential Security Inspections	2/0	2/0	0/0	1/0	2/0	1/0	1/0	1/0	1/0	0/0	0/0	0/0
Commercial Security Inspections	2/0	1/0	0/0	1/0	0/0	0/0	0/0	1/0	0/0	0/0	0/0	0/0
Special Miscellaneous Presentations*	1/0	2/0	7/0	8/0	7/2	1/0	2/3	5/1	3/2	2/2	6/1	5/0
Complexes in Crime Free Multi/Mobile Housing Program	21	22	22	22	22	22	22	22	22	22	22	22

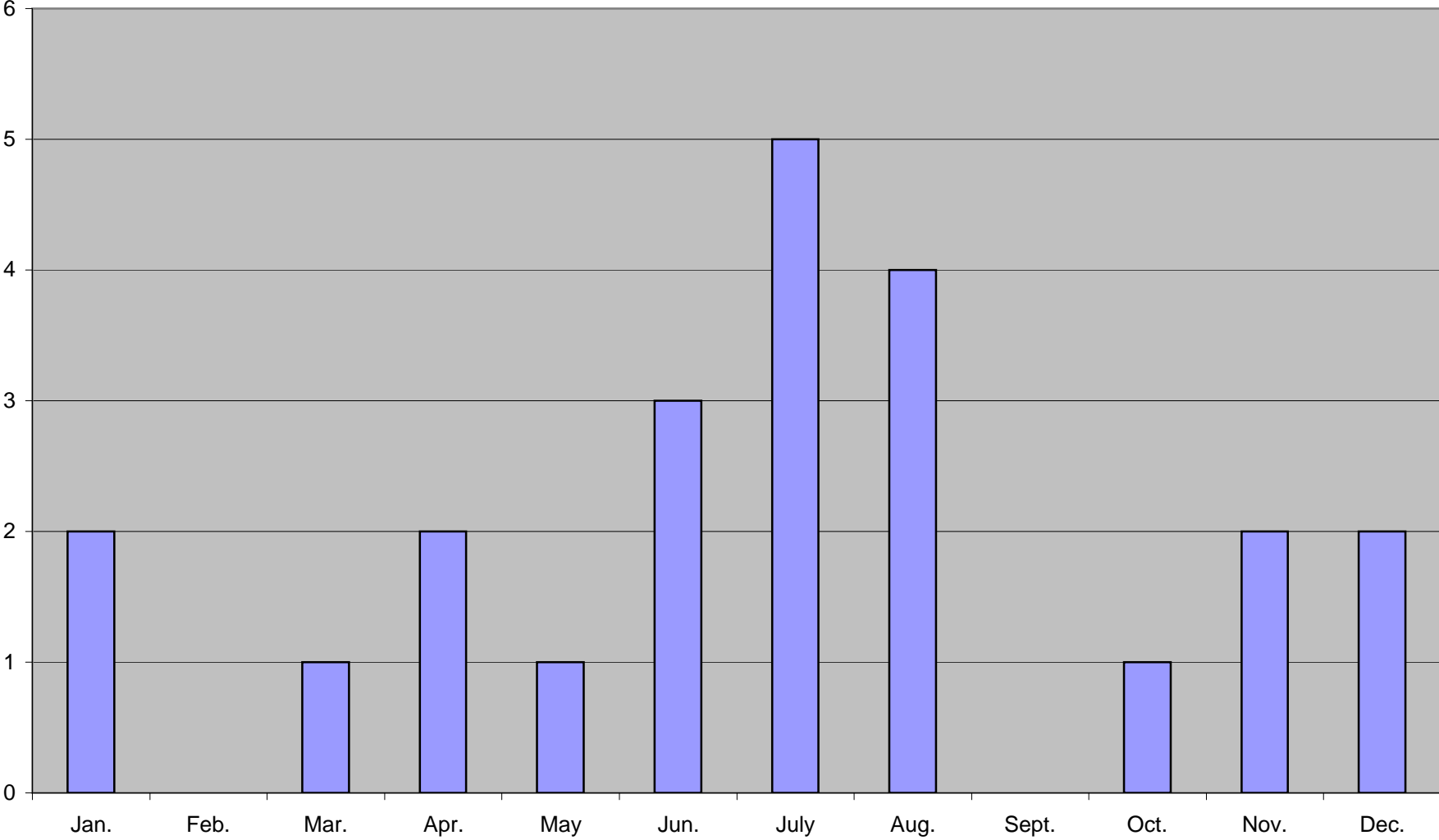
	Q-1/Summer	Q-2/Fall	Q-3/Winter	Q-4/Spring	Total
Neighborhood Watch Meetings	7	8	6	5	26
Residential Security Inspections	4	4	3	0	11
Commercial Security Inspections	3	1	1	0	5
Special Miscellaneous Presentations*	10	18	16	16	60
Complexes in Crime Free Multi/Mobile Housing Program	22	22	22	22	22

Crime Prevention Performance Measures Summary Chart Jan 2008 - Dec 2008

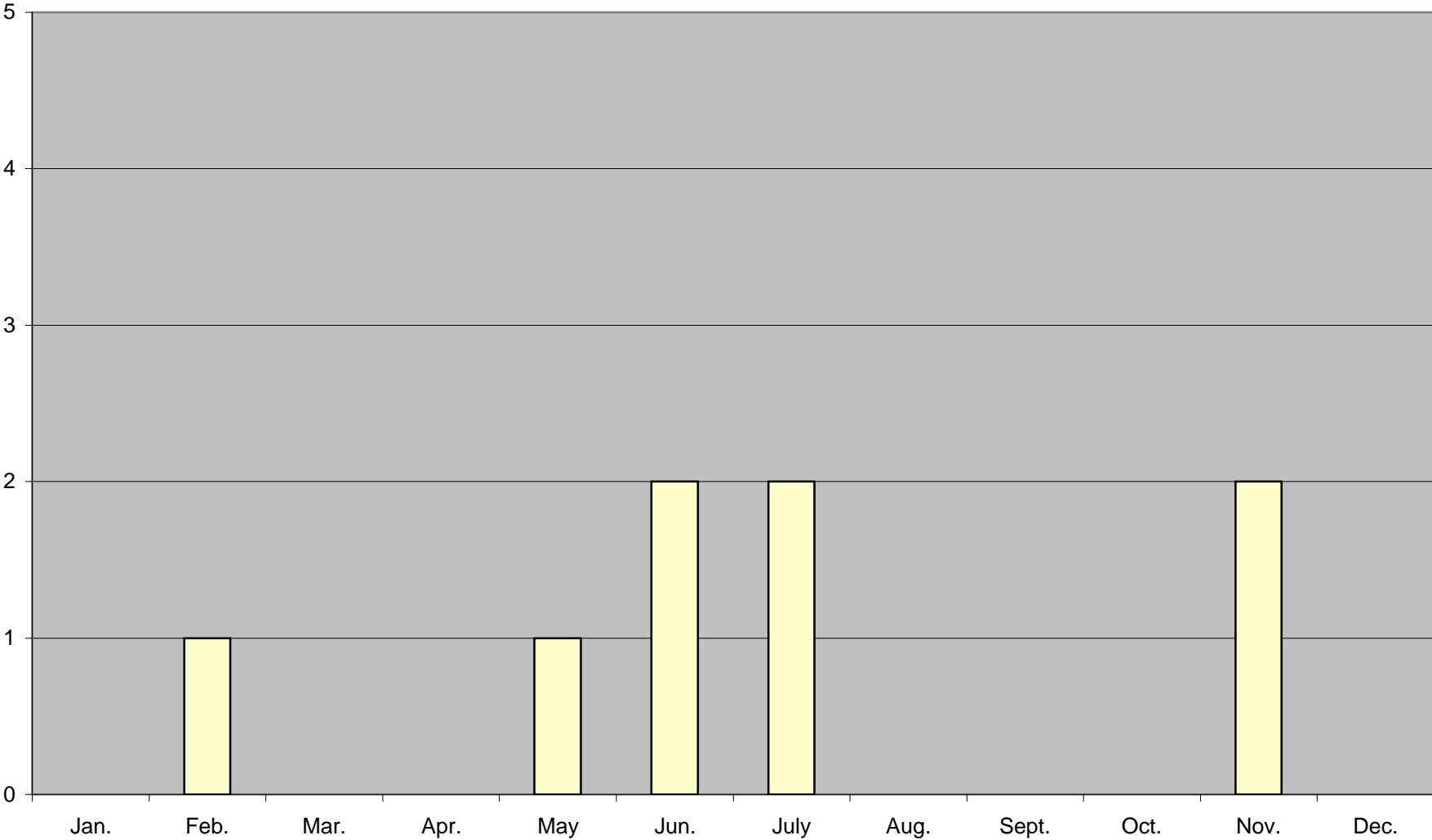
■ Neighborhood Watch Meetings ■ Residential Security Inspections ■ Commercial Security Inspections ■ Special Miscellaneous Presentaions



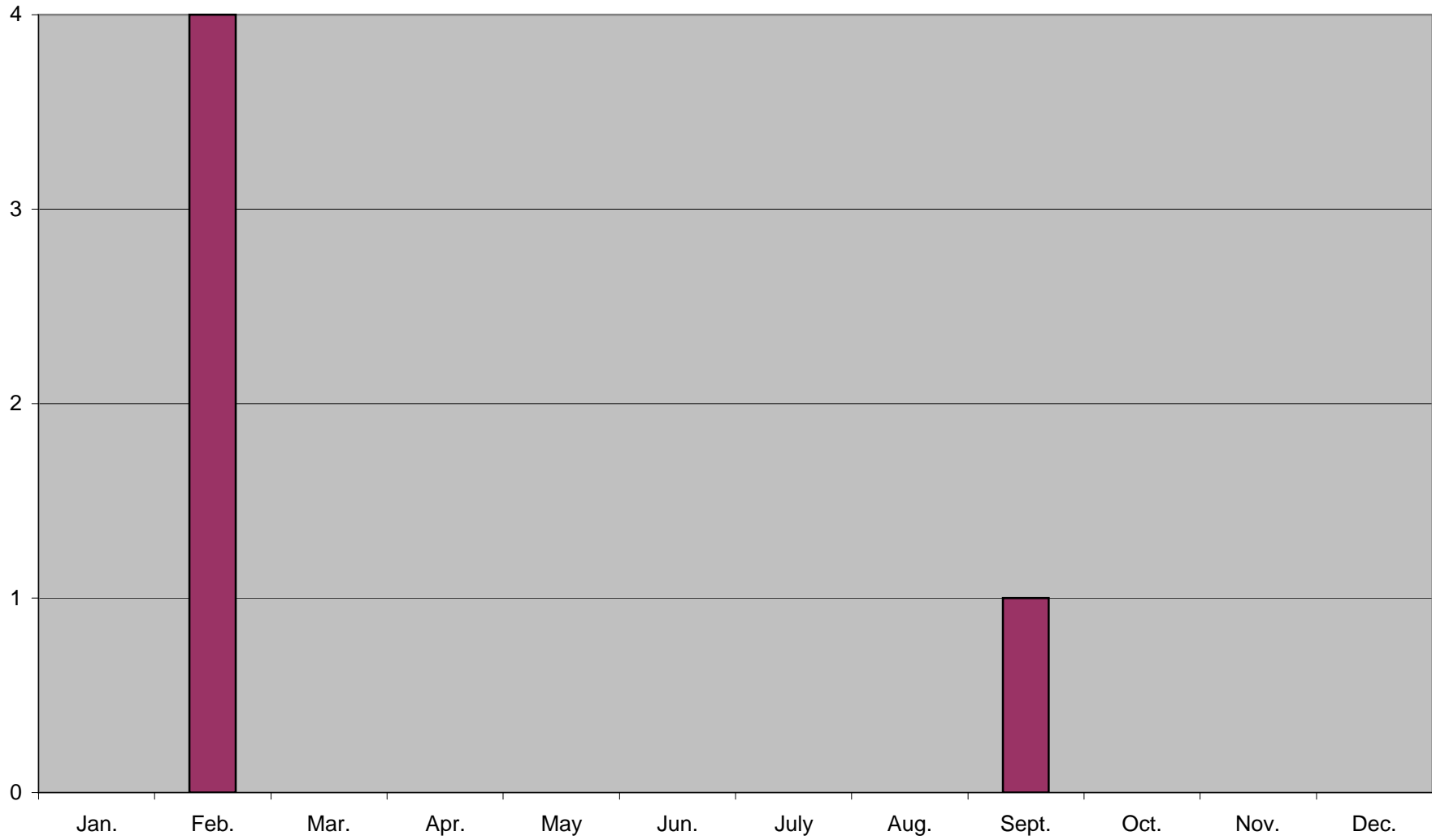
Neighborhood Watch Meetings Jan 2008 - Dec 2008



Commercial Security Inspections Jan 2008 - Dec 2008



Residential Security Inspections Jan 2008 - Dec 2008



Crime Prevention Special Presentations Jan 2008 - Dec 2008

